

31 Collins Cross

Bishop's Stortford

Guide Price £425,000

Welcome to Collins Cross. With stacks of potential to add your own stamp, this three bedroom home sat close to Bishops Stortford station and town centre is a great find.

Council Tax band: D

Tenure: Freehold

- Walking distance to Bishops Stortford station
- Cul-de-sac location
- Driveway
- Garage
- Top ofsted school catchment



Hallway

Kitchen

11' 2" x 6' 11" (3.41m x 2.10m)

Living Room

14' 8" x 13' 5" (4.46m x 4.08m)

Bedroom 1

14' 8" x 10' 8" (4.46m x 3.25m)

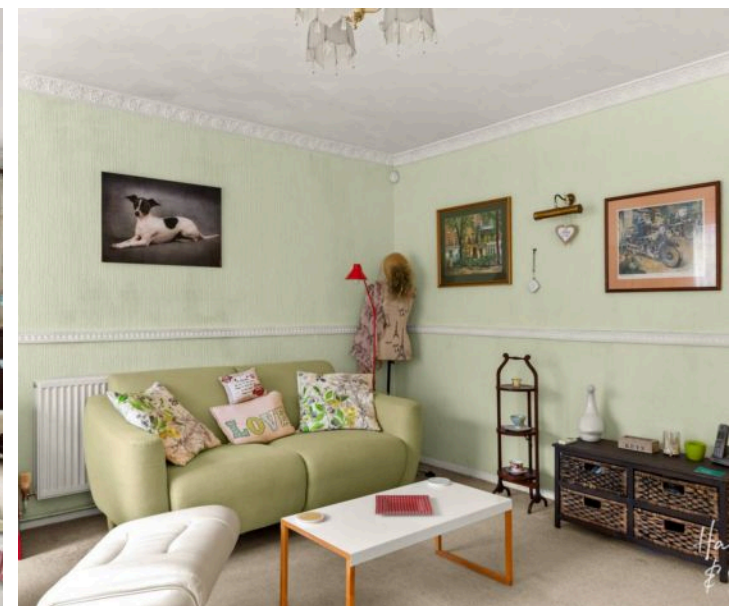
Bedroom 2

13' 5" x 7' 8" (4.08m x 2.34m)

Bedroom 3

8' 9" x 6' 8" (2.66m x 2.03m)

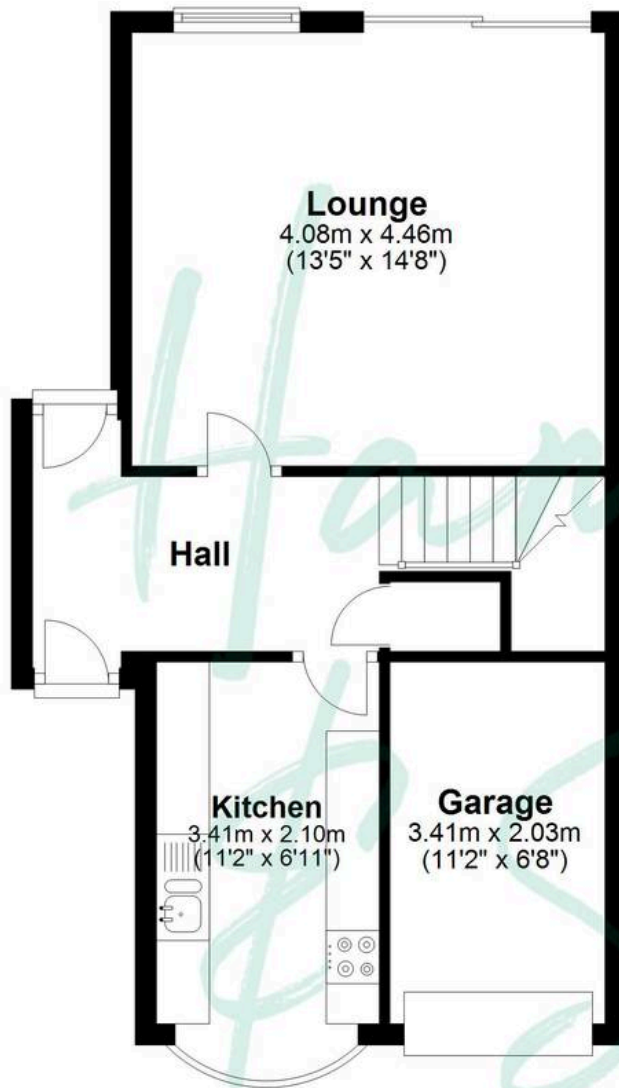
Bathroom





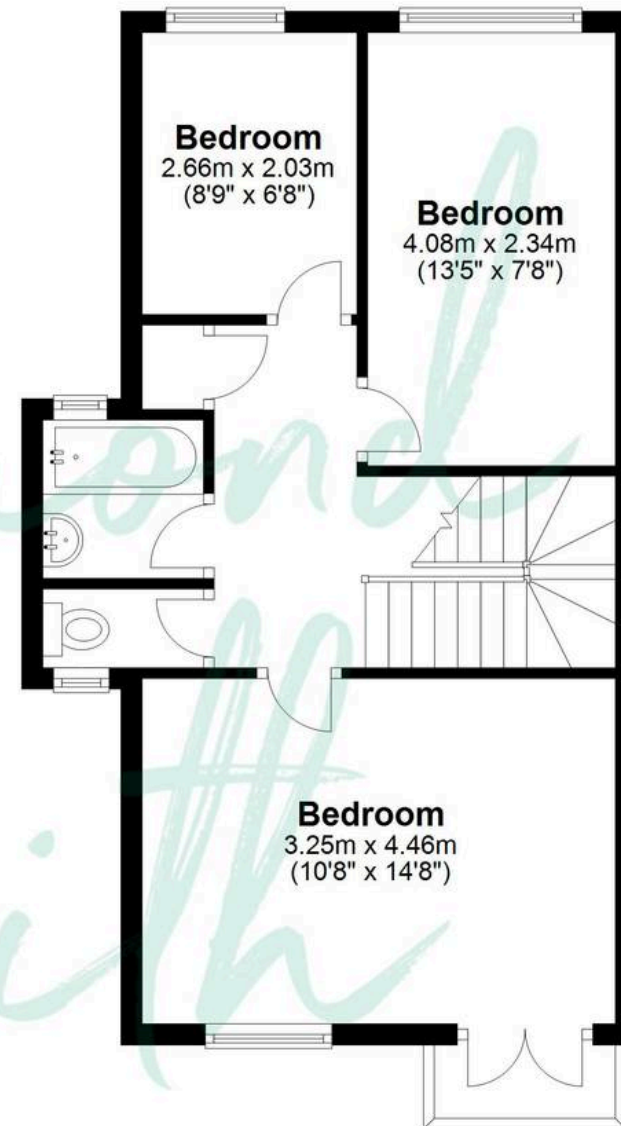
Ground Floor

Approx. 43.3 sq. metres (465.9 sq. feet)



First Floor

Approx. 43.9 sq. metres (472.1 sq. feet)



Total area: approx. 87.1 sq. metres (938.0 sq. feet)

THE FLOORPLAN IS FOR ILLUSTRATIVE PURPOSES ONLY AND IS NOT TO SCALE. Measurements and features are approximate and may differ from the actual property. Verify all details independently; no liability is accepted for errors or omissions.