

Greenwood Mill Street

Harlow, Harlow

Council Tax band: F

Tenure: Freehold

- Three Bedroom Family Home
- Spacious Landscaped Garden
- Close to Epping and Harlow town centre
- Two family bathrooms
- Two spacious outbuildings
- Private Location
- Easy Access To M11



Entrance Hallway

Lounge

19' 5" x 12' 3" (5.92m x 3.73m)

Kitchen / Diner

24' 7" x 11' 3" (7.49m x 3.42m)

Utility

7' 6" x 7' 1" (2.29m x 2.16m)

Bathroom

Bedroom One

13' 5" x 12' 0" (4.10m x 3.66m)

Bedroom Two

17' 9" x 8' 4" (5.42m x 2.53m)

Bedroom Three

17' 9" x 10' 1" (5.42m x 3.08m)

Bathroom

Gym

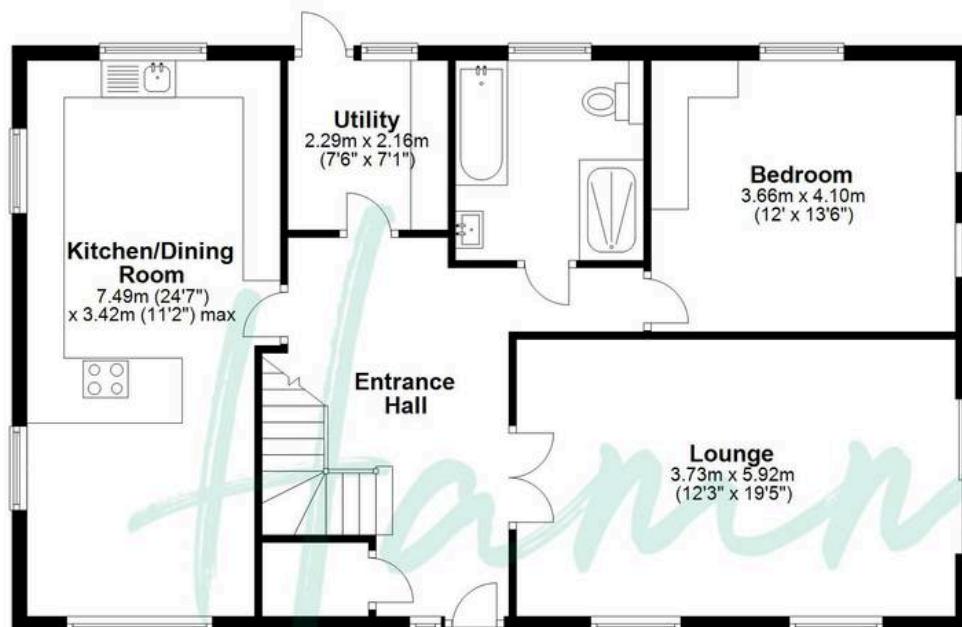
21' 0" x 14' 6" (6.41m x 4.43m)





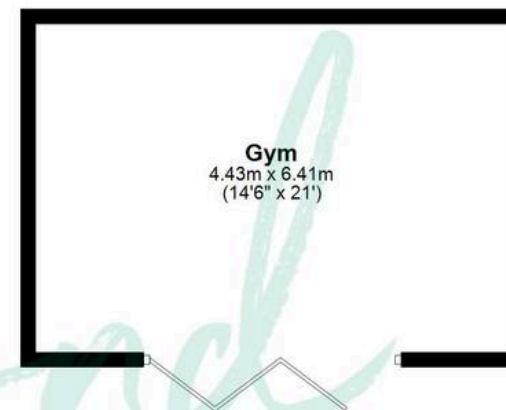
Ground Floor

Approx. 93.7 sq. metres (1008.9 sq. feet)



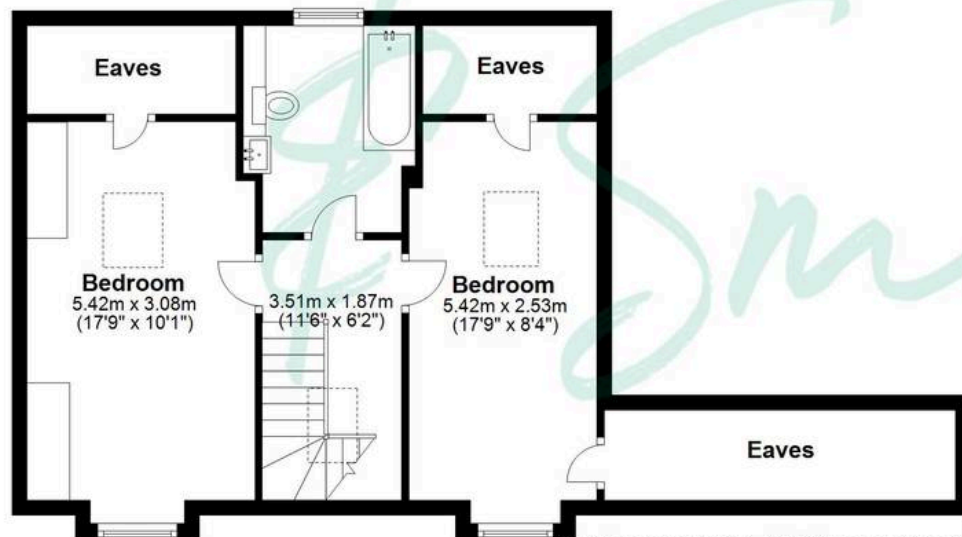
Outbuilding

Approx. 28.3 sq. metres (305.1 sq. feet)



First Floor

Approx. 55.8 sq. metres (600.3 sq. feet)



Outbuilding

Approx. 20.2 sq. metres (217.1 sq. feet)



Total area: approx. 198.0 sq. metres (2131.4 sq. feet)

THE FLOORPLAN IS FOR ILLUSTRATIVE PURPOSES ONLY AND IS NOT TO SCALE. Measurements and features are approximate and may differ from the actual property. Verify all details independently; no liability is accepted for errors or omissions.