

41 Upland Road

Thornwood, Epping

Guide Price £425,000

Filled with opportunity from floorboard to rafter, this two bedroom home has fantastic potential to add your own stamp. Located in Thornwood, you're only a short drive away from both Epping and Harlow Council Tax band: E

Tenure: Freehold

- CHARACTER HOME
- LOFT ROOM
- SHORT DISTANCE FROM EPPING
- COUNTRYSIDE VIEWS



Lounge

12' 0" x 12' 3" (3.66m x 3.73m)

Dining

10' 3" x 12' 3" (3.12m x 3.73m)

Kitchen

9' 7" x 7' 7" (2.92m x 2.31m)

Conservatory

14' 9" x 9' 11" (4.50m x 3.02m)

Bedroom

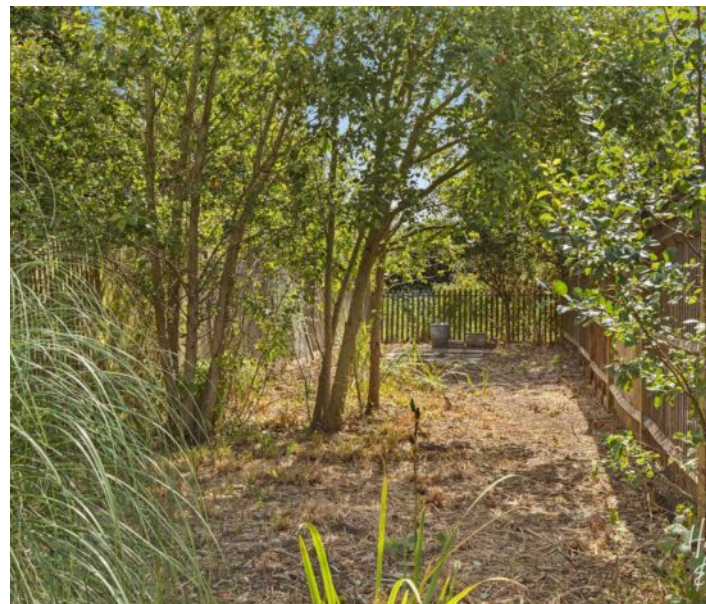
12' 0" x 12' 3" (3.66m x 3.73m)

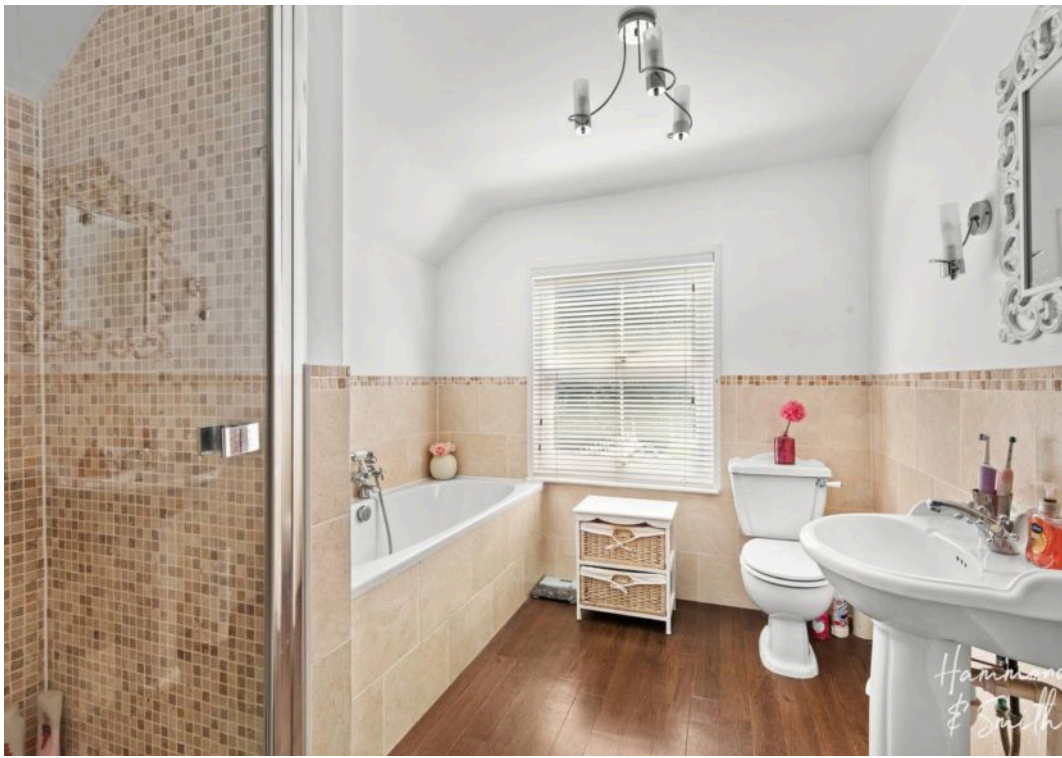
Bedroom

10' 3" x 8' 5" (3.12m x 2.57m)

Family Bathroom**Loft Room**

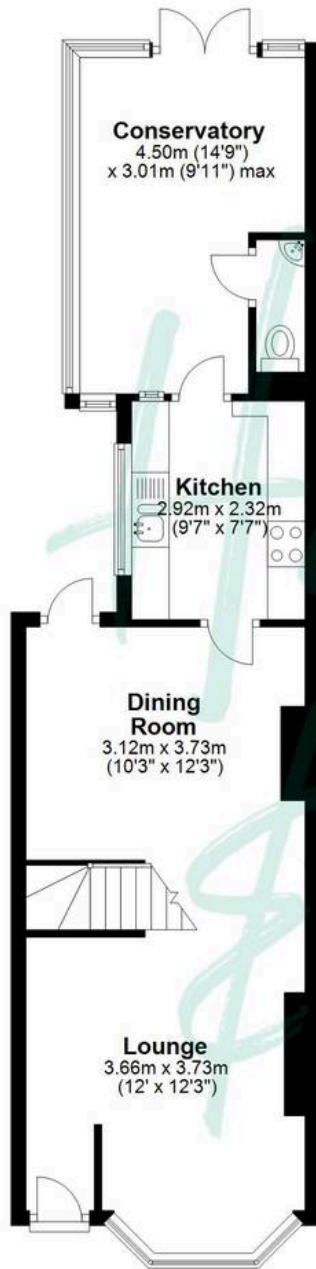
13' 0" x 11' 4" (3.96m x 3.45m)





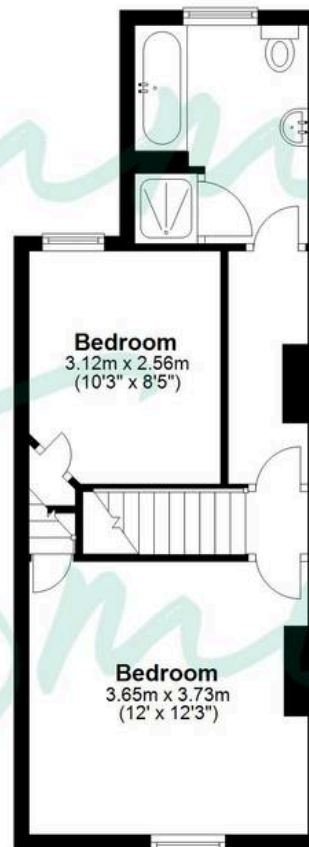
Ground Floor

Approx. 50.3 sq. metres (541.5 sq. feet)



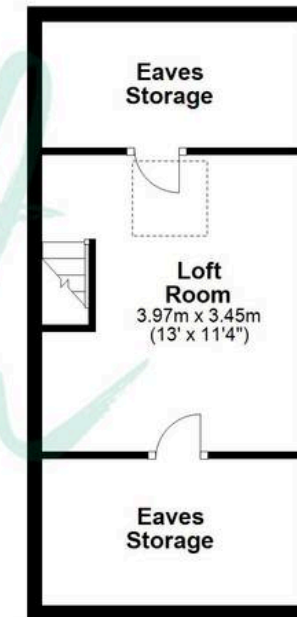
First Floor

Approx. 36.1 sq. metres (389.0 sq. feet)



Loft

Approx. 26.7 sq. metres (286.9 sq. feet)



Total area: approx. 113.1 sq. metres (1217.4 sq. feet)

THE FLOORPLAN IS FOR ILLUSTRATIVE PURPOSES ONLY AND IS NOT TO SCALE. Measurements and features are approximate and may differ from the actual property. Verify all details independently; no liability is accepted for errors or omissions.