

# 5 Herb Farm Granaries London Road

Harlow, Essex

Guide Price £1,225,000

Council Tax band: F

Tenure: Freehold

- Exclusive gated development
- Detached family home
- Countryside Views
- Internal space in excess of 2000sqft
- Outbuilding to rear
- Southerly facing garden
- Great location for commuters
- Air Conditioning
- Parking for upto several vehicles





## Entrance Hall

## Living Room

15' 6" x 19' 9" (4.72m x 6.01m)

## Kitchen Area

18' 11" x 12' 1" (5.76m x 3.69m)

## Family Room

17' 7" x 19' 6" (5.35m x 5.95m)

## Dining Room/ Bedroom Five

15' 8" x 11' 11" (4.77m x 3.62m)

## Utility Room

4' 5" x 7' 2" (1.35m x 2.19m)

## Cloakroom

## First Floor

## Bedroom One

10' 2" x 15' 4" (3.10m x 4.68m)

## En-suite Shower Room

## Bedroom

10' 1" x 12' 1" (3.07m x 3.69m)

## Bedroom

9' 9" x 15' 0" (2.96m x 4.58m)

## Bedroom

12' 7" x 12' 0" (3.84m x 3.66m)

## Bedroom

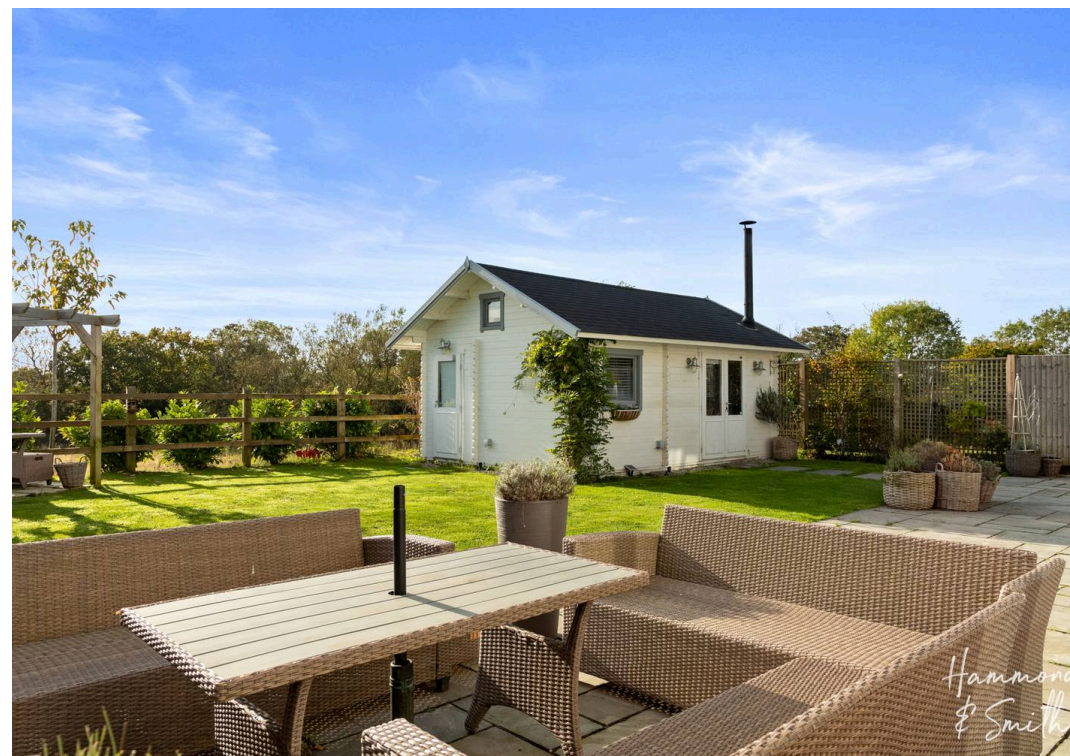
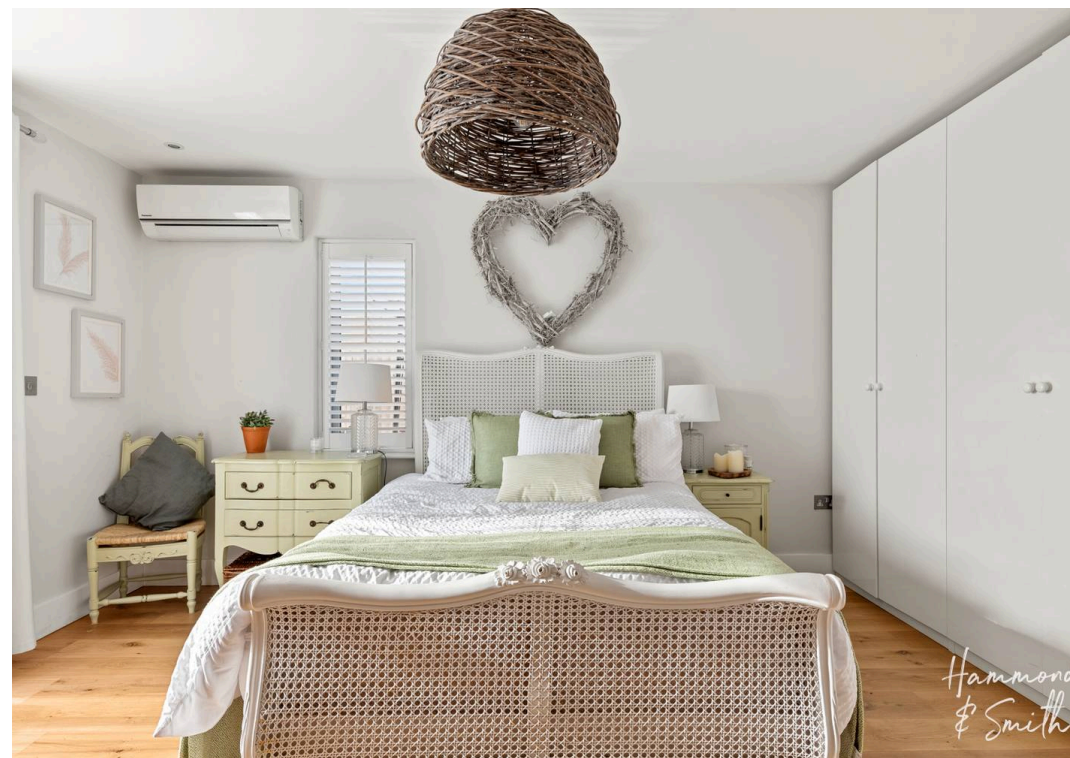
12' 7" x 12' 0" (3.84m x 3.66m)

## Bathroom

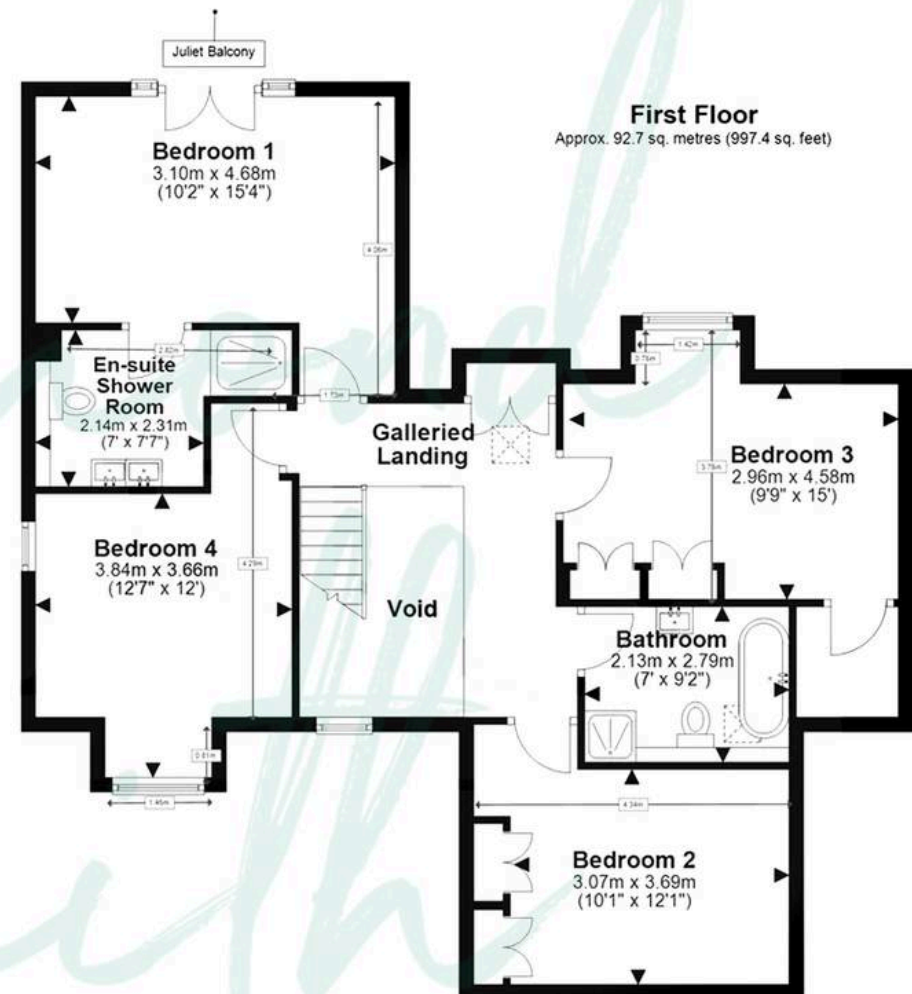
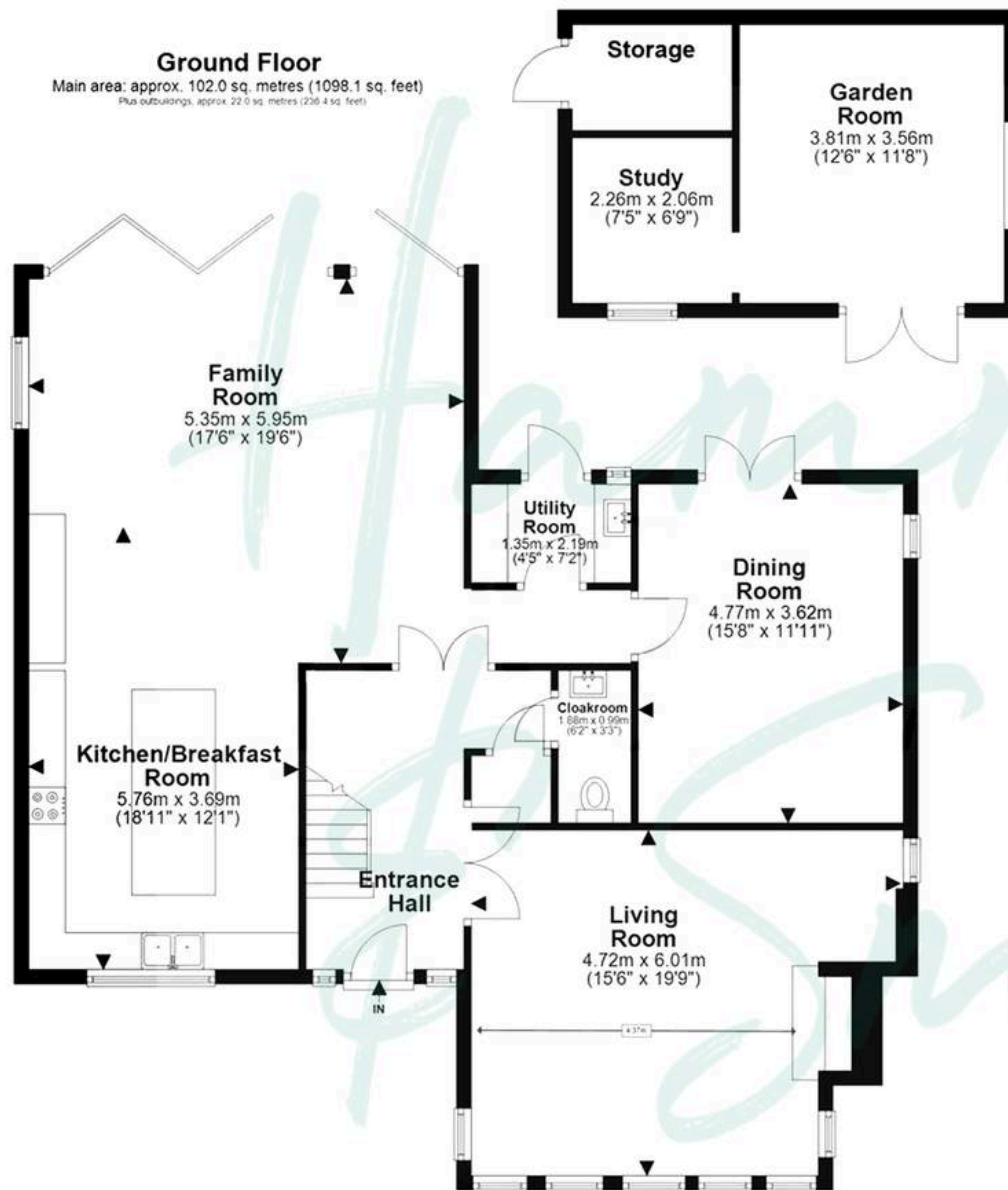
7' 0" x 9' 2" (2.13m x 2.79m)











Main area: Approx. 194.7 sq. metres (2095.6 sq. feet)  
Plus outbuildings, approx. 22.0 sq. metres (236.4 sq. feet)

**Total area including outbuildings: approx. 216.7 sq metres (2332 sq feet)**

Our floor plans are intended to give a general indication of the proposed floor layout only and may vary in the finished building and overall footage  
Plan produced using PlanUp.