

Edbury Mount End

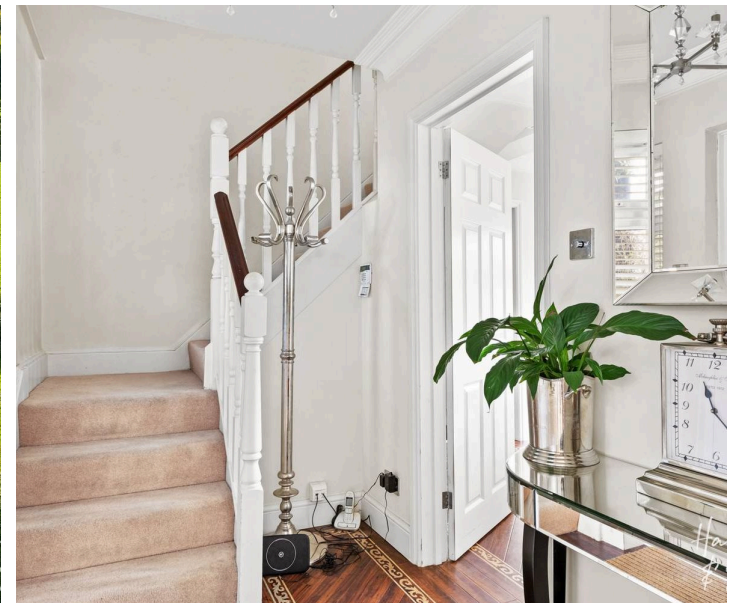
Theydon Mount, Epping

Guide Price £1,100,000

Council Tax band: E

Tenure: Freehold

- SITUATED ON 0.5 ACRE PLOT
- AMPLE OFF ROAD PARKING & DOUBLE GARAGE
- ANNEXE POTENTIAL
- STUNNING VIEWS
- POTENTIAL TO EXTEND
- SHORT DRIVE TO EPPING STATION



Entrance Hall

Lounge

17' 6" x 12' 2" (5.33m x 3.71m)

Family Room

16' 6" x 11' 11" (5.03m x 3.63m)

Dining Room

11' 7" x 11' 7" (3.53m x 3.53m)

Kitchen

11' 7" x 9' 1" (3.53m x 2.77m)

Utility

5' 7" x 5' 7" (1.70m x 1.70m)

Conservatory

10' 2" x 13' 1" (3.10m x 4.00m)

First Floor

Bedroom One

10' 6" x 17' 11" (3.20m x 5.46m)

En-suite Bathroom

Bedroom Two

10' 6" x 10' 6" (3.20m x 3.20m)

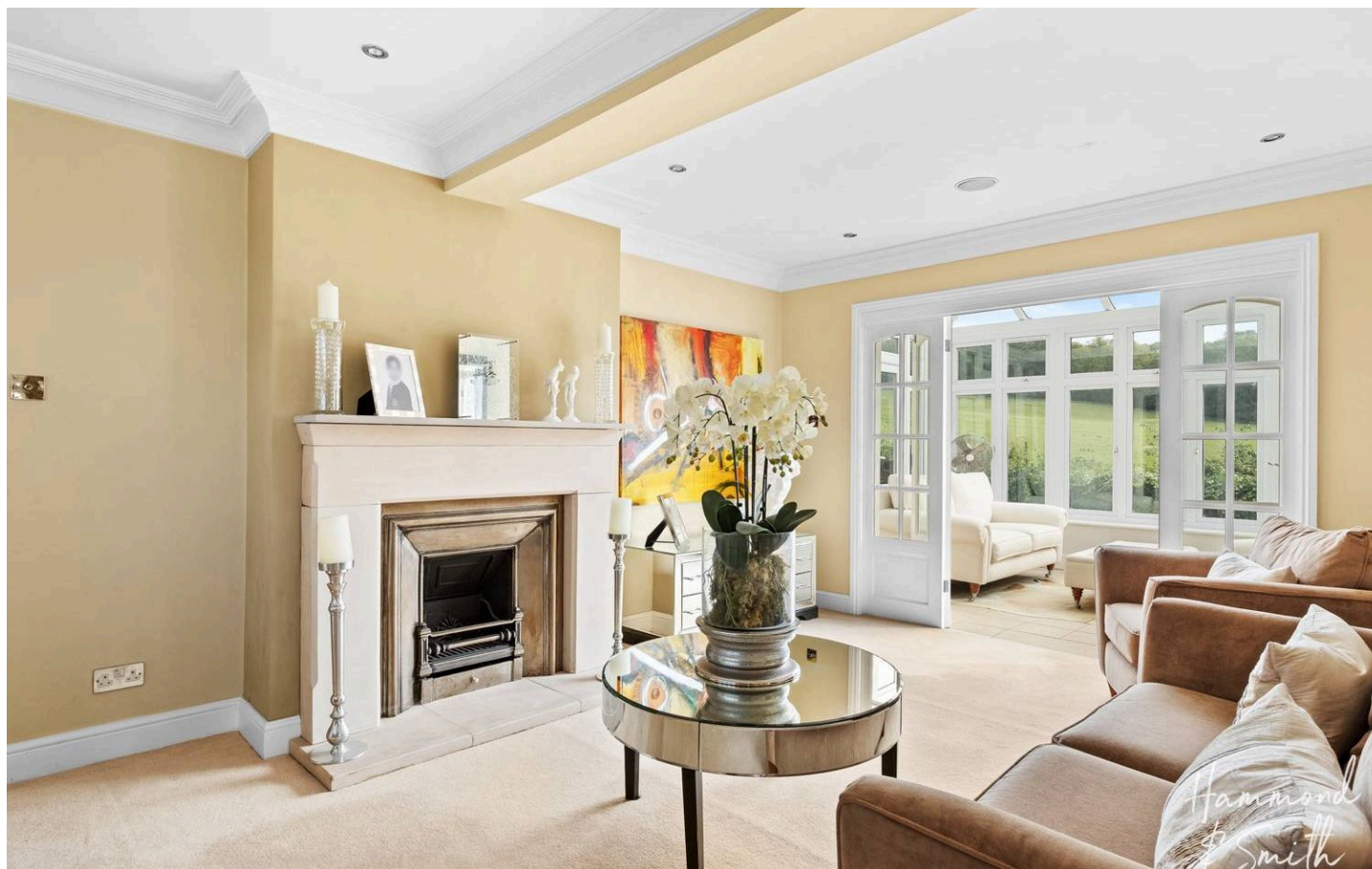
Bedroom Three

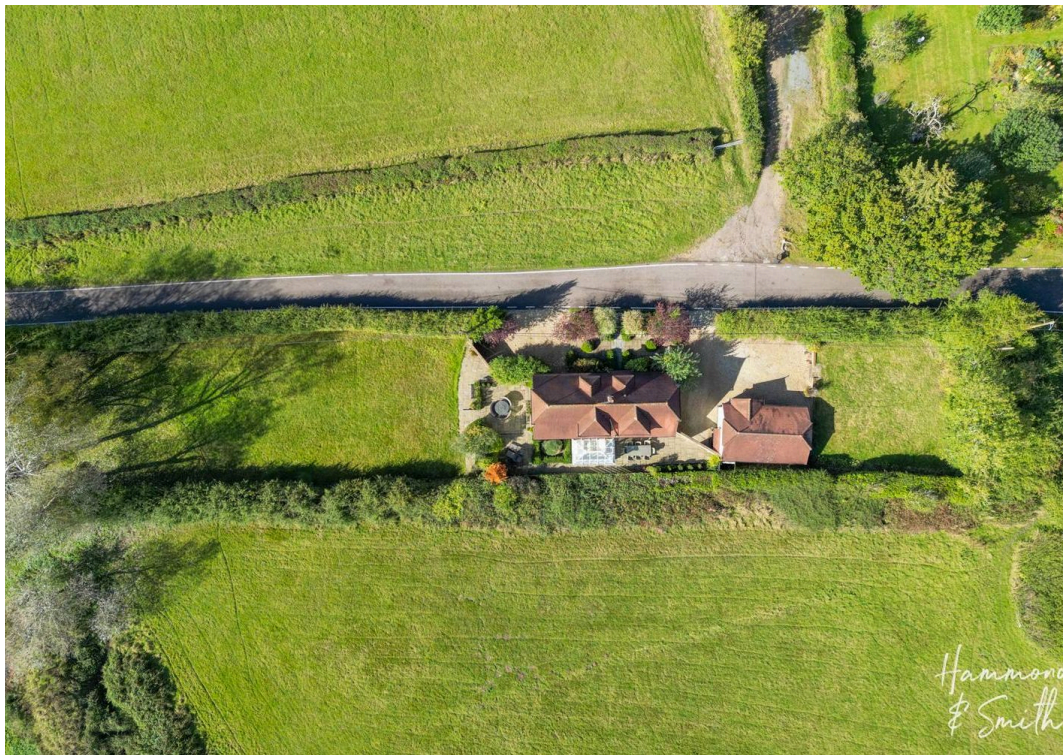
8' 8" x 10' 5" (2.64m x 3.17m)

Bedroom Four

8' 7" x 7' 5" (2.62m x 2.25m)

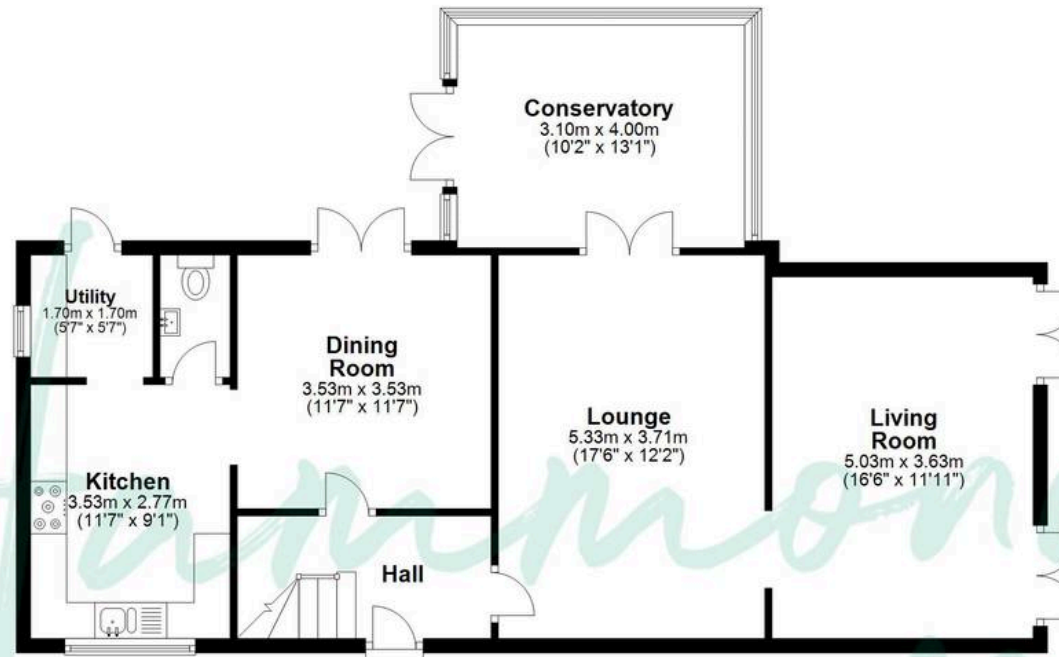
Bathroom





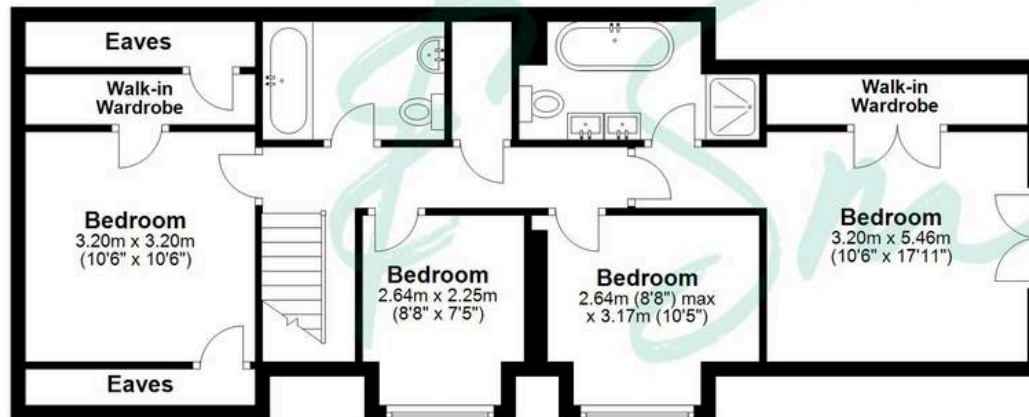
Ground Floor

Approx. 86.0 sq. metres (926.0 sq. feet)



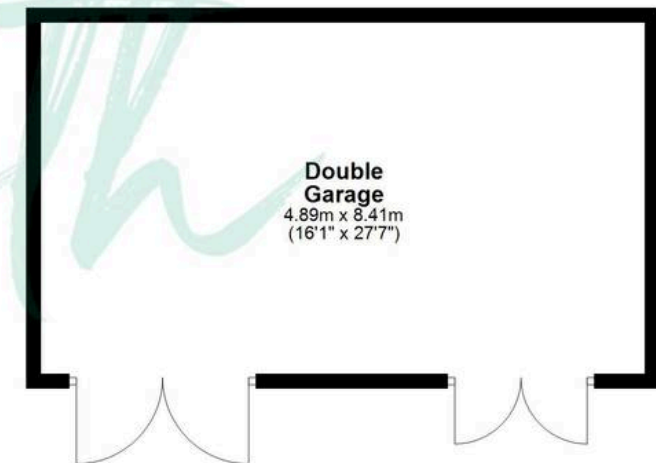
First Floor

Approx. 66.7 sq. metres (717.6 sq. feet)



Garage

Approx. 41.1 sq. metres (442.5 sq. feet)



Total area: approx. 193.8 sq. metres (2086.2 sq. feet)

THE FLOORPLAN IS FOR ILLUSTRATIVE PURPOSES ONLY AND IS NOT TO SCALE. Measurements and features are approximate and may differ from the actual property. Verify all details independently; no liability is accepted for errors or omissions.