

30 St. Johns Road

Epping, Essex

Council Tax band: D

Tenure: Freehold

- SEMI DETACHED PERIOD COTTAGE
- CLOSE TO HIGH STREET
- OVER 100FT REAR GARDEN
- POTENTIAL TO EXTEND (STP)
- WOOD BURNING STOVE
- MODERN FULLY FITTED KITCHEN



Hammond
& Smith

Front Door

Lounge/Dining Room

27' 4" x 11' 0" (8.34m x 3.36m)

Kitchen

9' 2" x 6' 2" (2.80m x 1.88m)

Stairs Leading To

Bedroom One

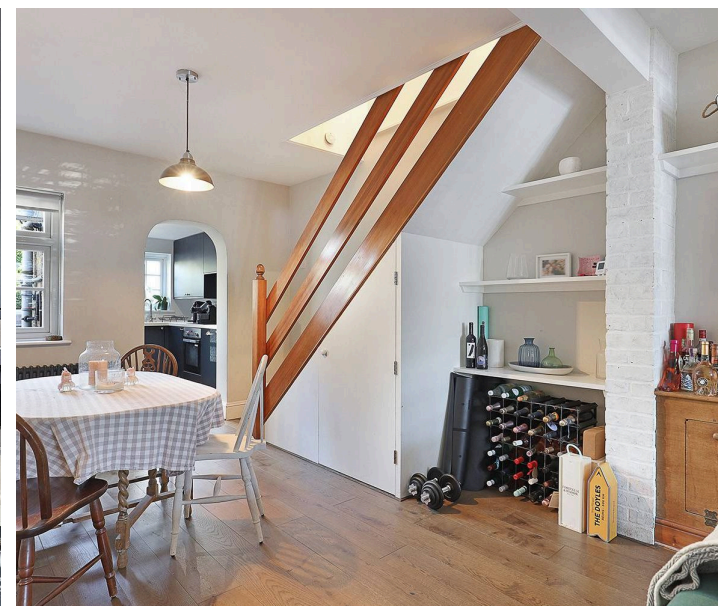
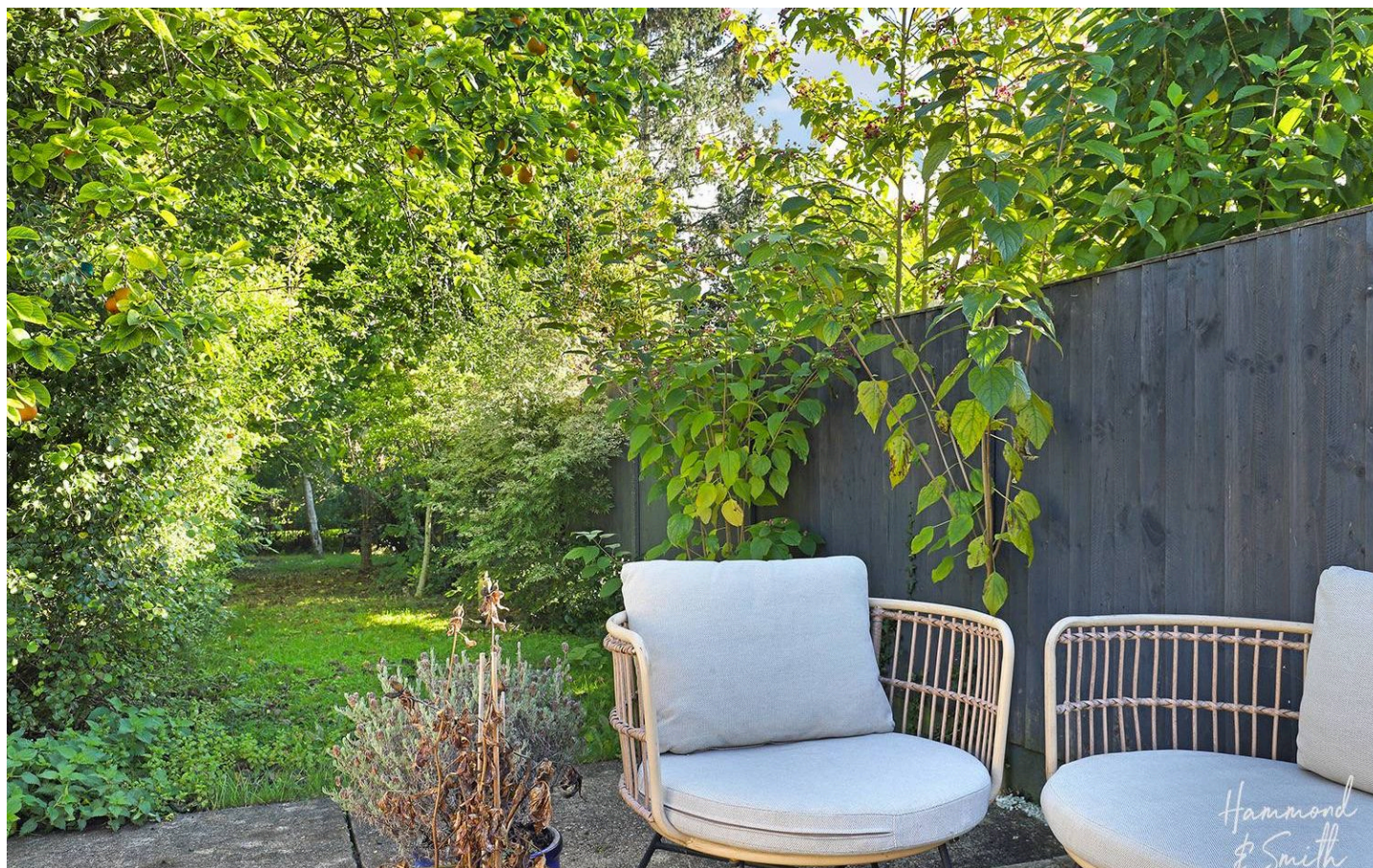
11' 6" x 11' 0" (3.50m x 3.36m)

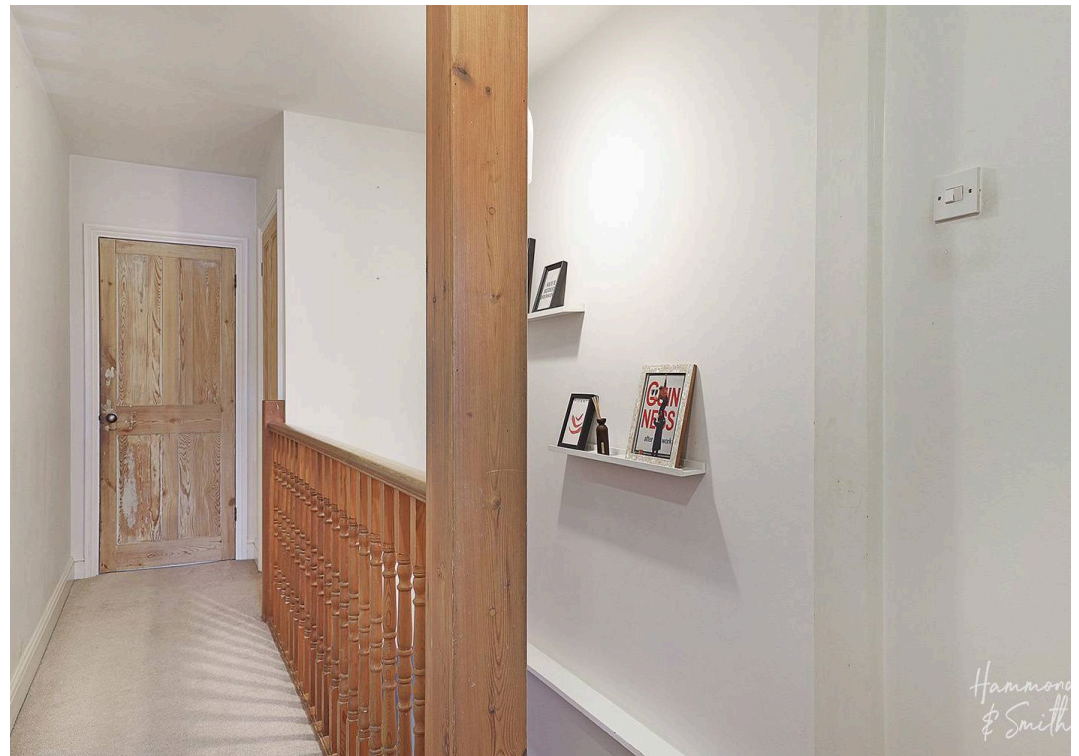
Bedroom Two

12' 5" x 4' 10" (3.79m x 1.47m)

Family Bathroom

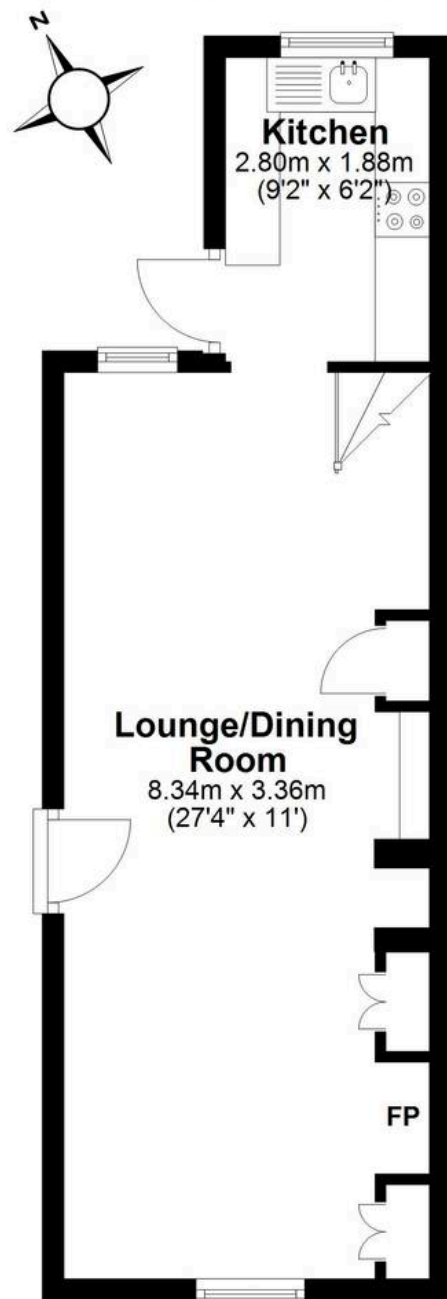
9' 2" x 6' 1" (2.80m x 1.86m)





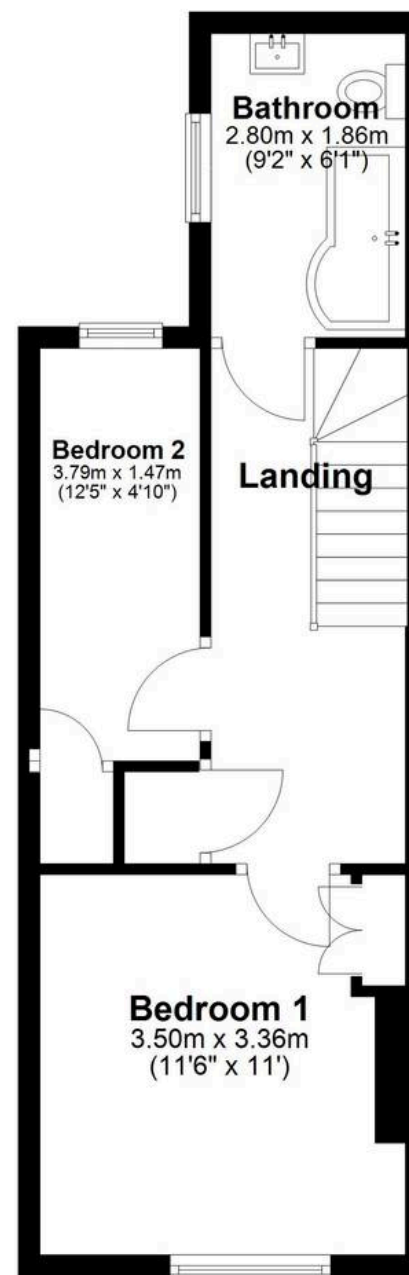
Ground Floor

Approx. 33.5 sq. metres (360.2 sq. feet)



First Floor

Approx. 33.5 sq. metres (360.2 sq. feet)



Total area: approx. 66.9 sq. metres (720.3 sq. feet)