

18 Pike Way

North Weald, Epping

Council Tax band: F

Tenure: Freehold

- POTENTIAL TO EXTEND
- LARGE GARAGE & OFF ROAD PARKING
- CLOSE TO WOODLAND
- THREE/ FOUR BEDROOM DETACHED HOME
- FANTASTIC FAMILY HOME
- MODERN BATHROOM
- DOWNSTAIRS WC
- EASY ACCESS TO M11



Entrance

Living Room

17' 5" x 12' 0" (5.31m x 3.65m)

Kitchen/ Diner

25' 0" x 17' 7" (7.61m x 5.36m)

Family Area

12' 6" x 10' 2" (3.80m x 3.10m)

Utility Room

12' 6" x 8' 2" (3.81m x 2.49m)

WC

First Floor

Primary Bedroom

17' 5" x 12' 0" (5.31m x 3.66m)

Dressing Room/ Bedroom Four

9' 11" x 6' 11" (3.02m x 2.11m)

Bedroom Two

15' 3" x 14' 4" (4.66m x 4.36m)

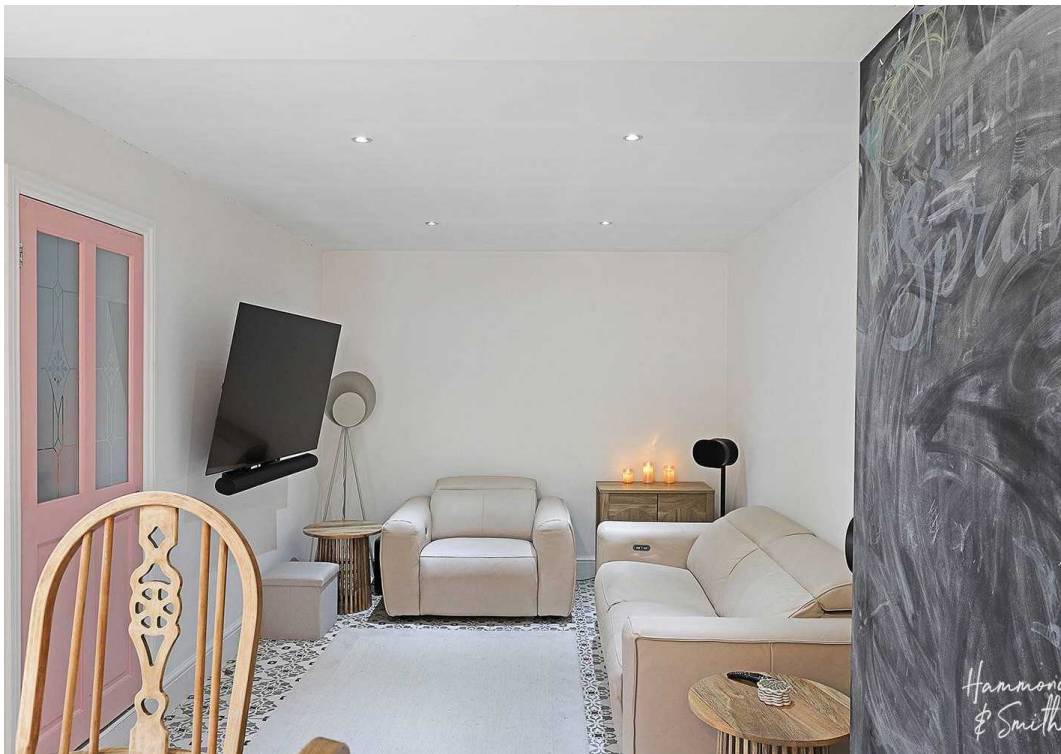
Bedroom Three

11' 1" x 8' 11" (3.39m x 2.72m)

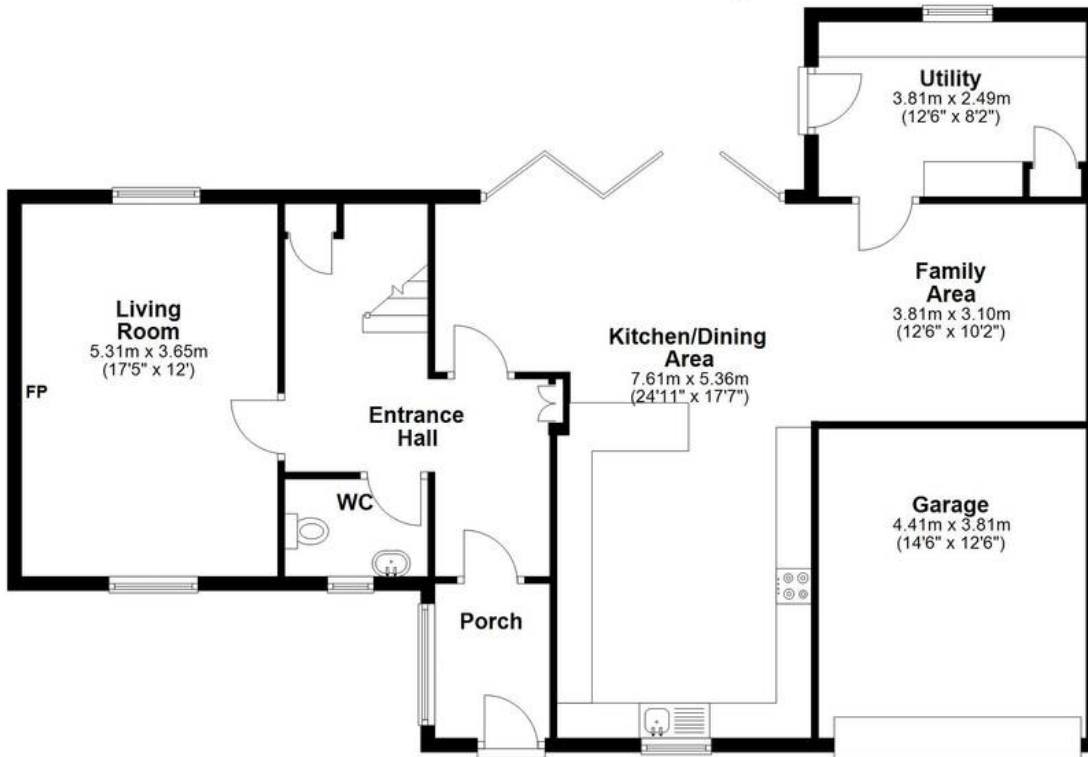
Bathroom

10' 9" x 6' 0" (3.28m x 1.82m)

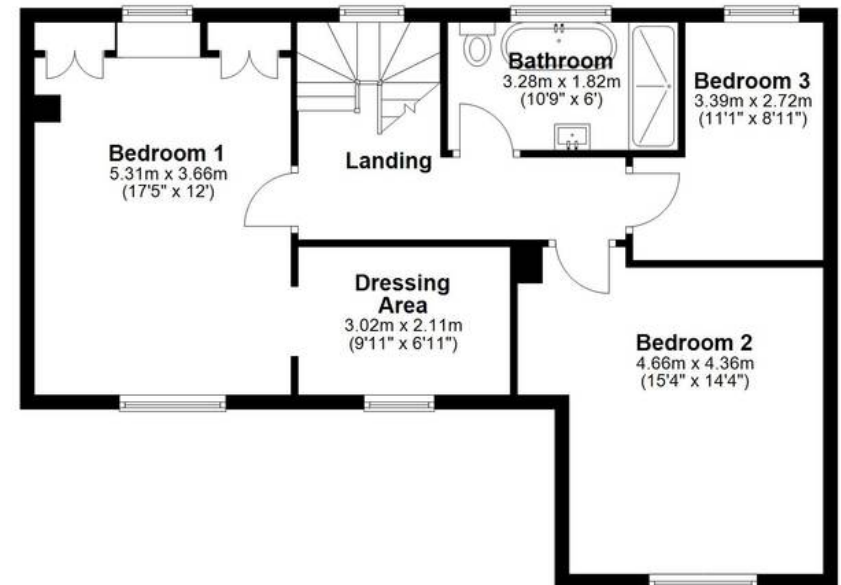




Ground Floor
Approx. 112.6 sq. metres (1212.2 sq. feet)



First Floor
Approx. 68.9 sq. metres (741.2 sq. feet)



Total area: approx. 181.5 sq. metres (1953.4 sq. feet)