

29 Buckingham Road

Epping, Essex

Guide Price £1,200,000

An exquisite 6 bed detached family home, complimented with the addition of a separate home gym and office space based just a stones throw from Epping High Street.

Council Tax band: TBD

Tenure: Freehold

- DETACHED GYM AND OFFICE SPACE
- WALKING DISTANCE TO STATION/HIGH STREET
- BI-FOLDING DOORS
- LANDSCAPED REAR GARDEN
- THREE EN-SUITES AND A FAMILY BATHROOM
- DRIVEWAY PARKING
- AIR-CONDITIONING
- QUOOKER TAP



Living Room

32' 1" x 12' 7" (9.79m x 3.83m)

Kitchen/ Dining Room

32' 1" x 12' 0" (9.79m x 3.65m)

Utility Room

7' 3" x 5' 9" (2.21m x 1.75m)

First Floor

Bedroom One

13' 3" x 10' 6" (4.04m x 3.21m)

Dressing Room

7' 10" x 9' 4" (2.38m x 2.84m)

En-suite Bathroom

5' 7" x 12' 2" (1.69m x 3.72m)

Bedroom Two

14' 10" x 9' 11" (4.52m x 3.01m)

En-suite Shower Room

4' 0" x 9' 11" (1.21m x 3.01m)

Bedroom Three

13' 3" x 10' 6" (4.04m x 3.21m)

Shower Room

5' 6" x 5' 9" (1.68m x 1.74m)

Bedroom Four

12' 7" x 10' 3" (3.84m x 3.13m)

Bedroom Five

9' 6" x 10' 11" (2.89m x 3.32m)

Bedroom Six

6' 5" x 10' 3" (1.95m x 3.13m)

Bathroom

6' 5" x 6' 0" (1.95m x 1.82m)





Hammond
& Smith



Hammond
& Smith

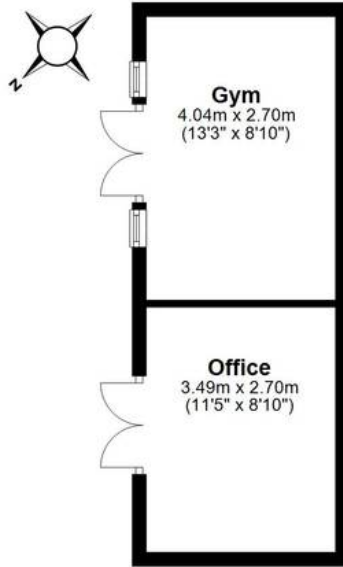


Hammond
& Smith

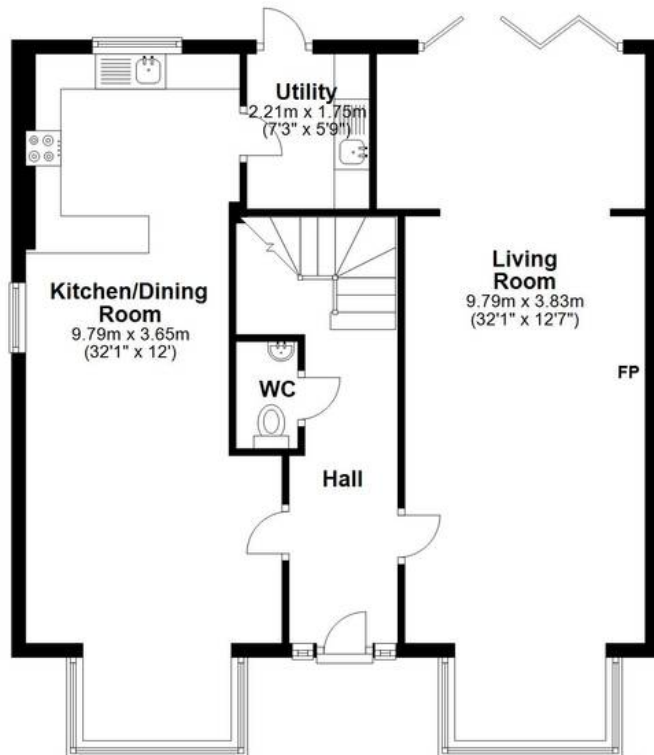
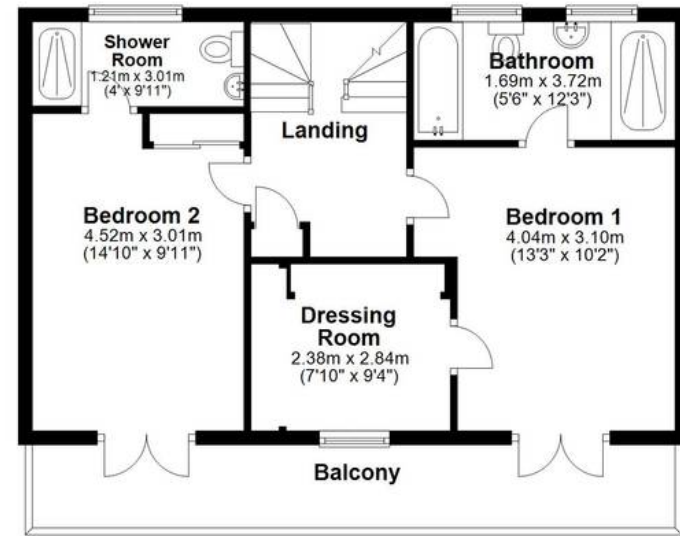


Hammond
& Smith

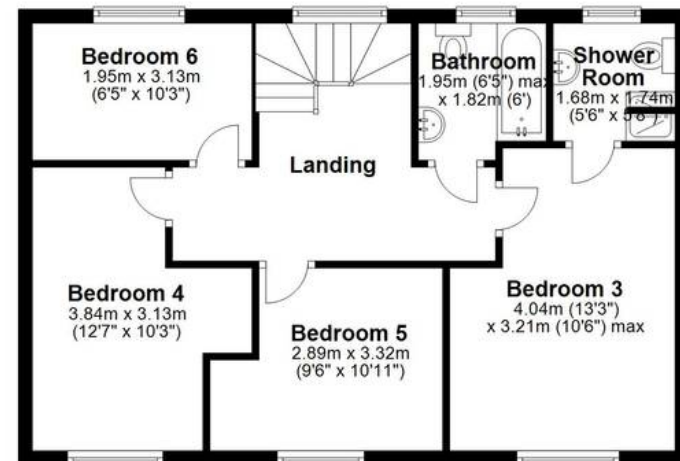
Ground Floor
 Approx. 97.6 sq. metres (1050.7 sq. feet)



First Floor
 Approx. 50.8 sq. metres (546.9 sq. feet)



Second Floor
 Approx. 55.2 sq. metres (594.4 sq. feet)



Total area: approx. 203.7 sq. metres (2192.1 sq. feet)