

34 Copper Beech Close

Ilford, Essex

£425,000

Council Tax band: D

- INTEGRAL GARAGE
- THREE BEDROOMS
- GROUND FLOOR WC
- CHAIN FREE
- CLOSE TO LOCAL SCHOOLS
- REAR ACCESS
- OPEN PLAN



Hall

Downstairs WC

Lounge/Dining Area

16' 9" x 15' 5" (5.10m x 4.70m)

Kitchen Area

10' 8" x 10' 2" (3.26m x 3.11m)

Integral Garage

16' 5" x 8' 2" (5.01m x 2.48m)

Landing

Bedroom 1

13' 4" x 10' 0" (4.06m x 3.06m)

Bedroom 2

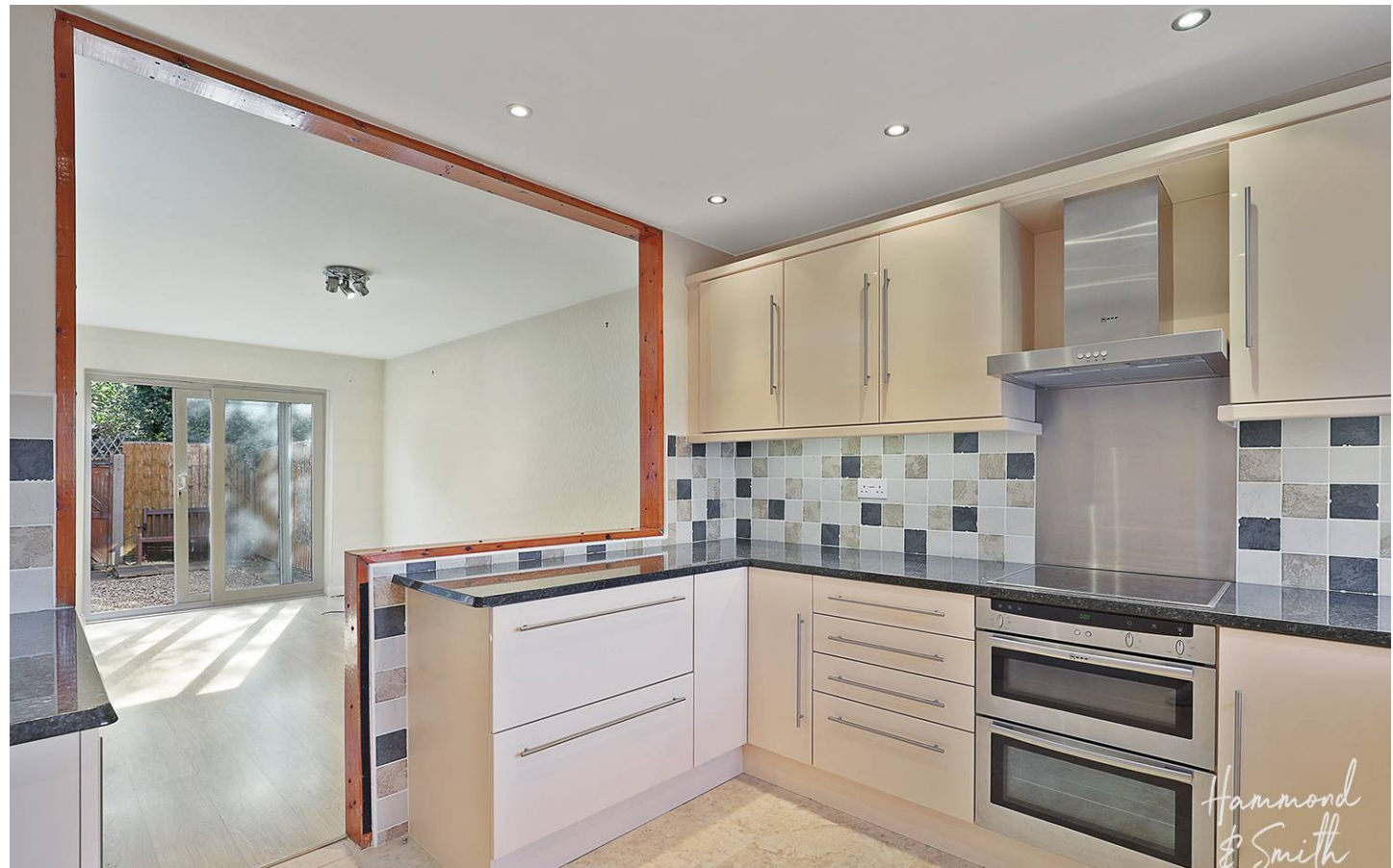
12' 10" x 10' 0" (3.90m x 3.06m)

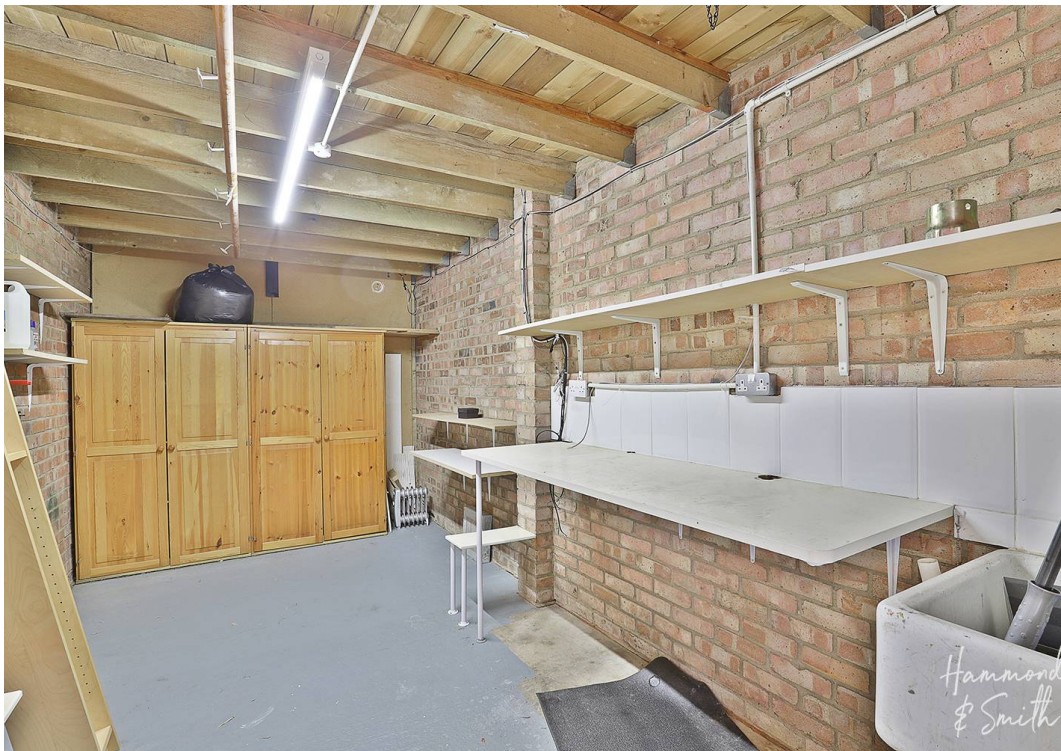
Bedroom 3

8' 2" x 7' 5" (2.48m x 2.27m)

Bathroom

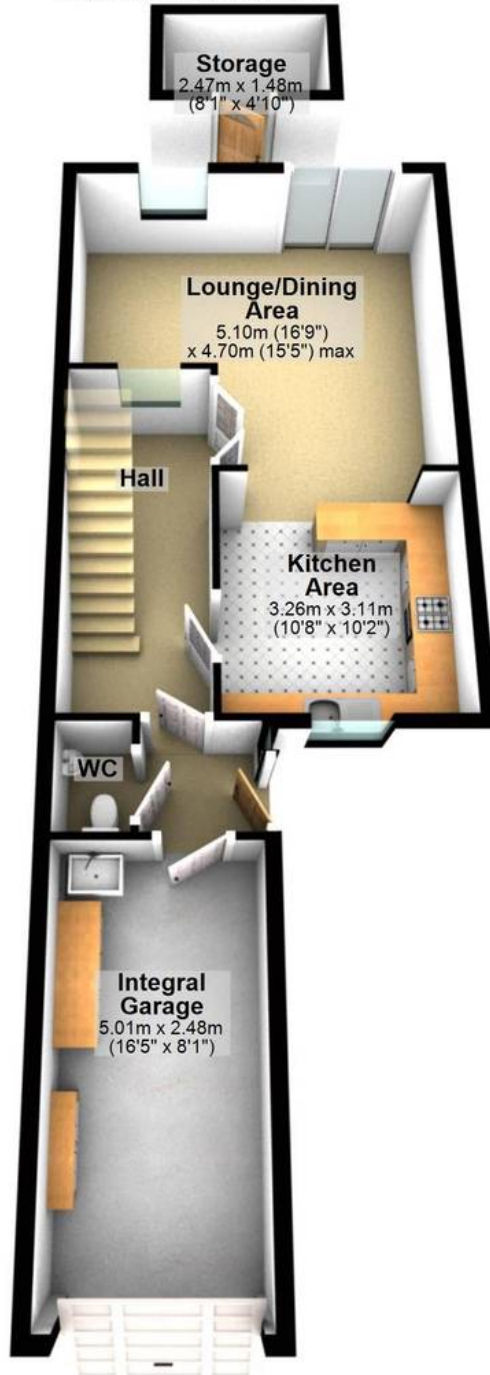
7' 4" x 6' 4" (2.24m x 1.94m)





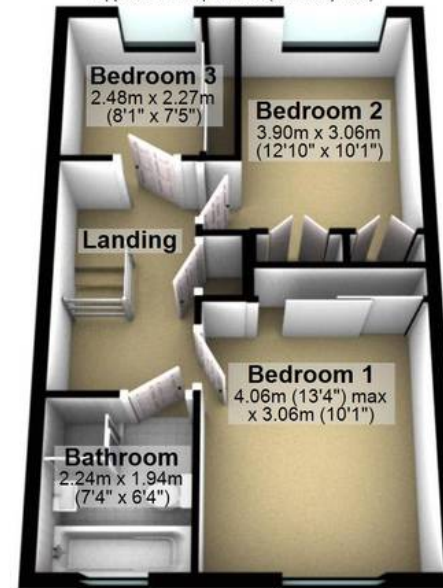
Ground Floor

Approx. 61.0 sq. metres (656.3 sq. feet)



First Floor

Approx. 41.1 sq. metres (442.6 sq. feet)



Total area: approx. 102.1 sq. metres (1098.9 sq. feet)