

18 Stonards Hill

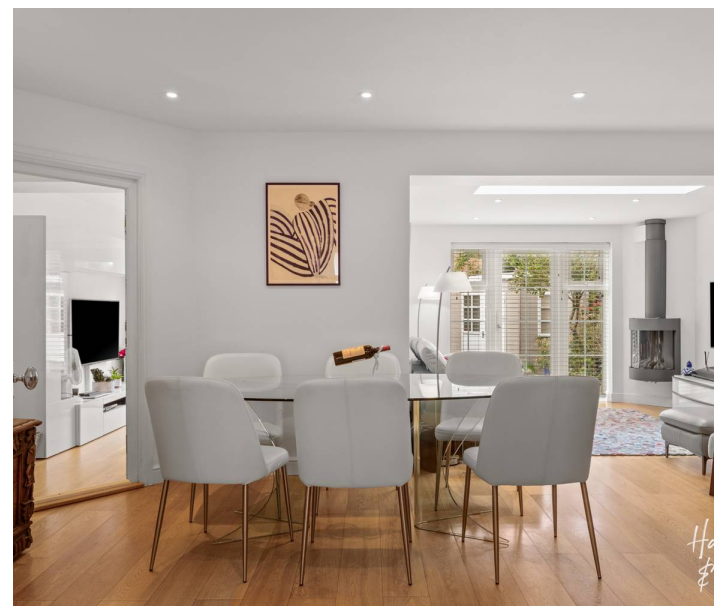
Epping, Essex

Guide Price £885,000

Council Tax band: F

Tenure: Freehold

- LARGE LIVING ROOM
- CLOSE TO HIGH STREET AND STATION
- UTILITY
- FAMILY ROOM
- SPACIOUS FAMILY HOME
- OFF ROAD PARKING
- EN-SUITE TO PRIMARY BEDROOM
- OVERLOOKING THE PARK
- GROUND FLOOR REAR EXTENSION



Entrance Hall

Kitchen

11' 0" x 7' 6" (3.36m x 2.29m)

Utility

9' 5" x 7' 11" (2.88m x 2.41m)

Downstairs Wc

Shower Room

7' 11" x 7' 11" (2.42m x 2.41m)

Living Room

22' 4" x 18' 10" (6.80m x 5.73m)

Family Room

15' 1" x 10' 0" (4.60m x 3.05m)

Stairs Leading To

Landing

Reception

10' 10" x 19' 11" (3.30m x 6.08m)

Bedroom Three

7' 11" x 13' 0" (2.42m x 3.95m)

Bedroom Four

11' 0" x 10' 3" (3.35m x 3.12m)

Family Bathroom

6' 9" x 7' 5" (2.05m x 2.26m)

Stairs Leading To

Landing

Bedroom One

15' 5" x 13' 0" (4.70m x 3.95m)

En-Suite Bathroom

7' 10" x 8' 9" (2.40m x 2.67m)





Hammond
& Smith



Hammond
& Smith



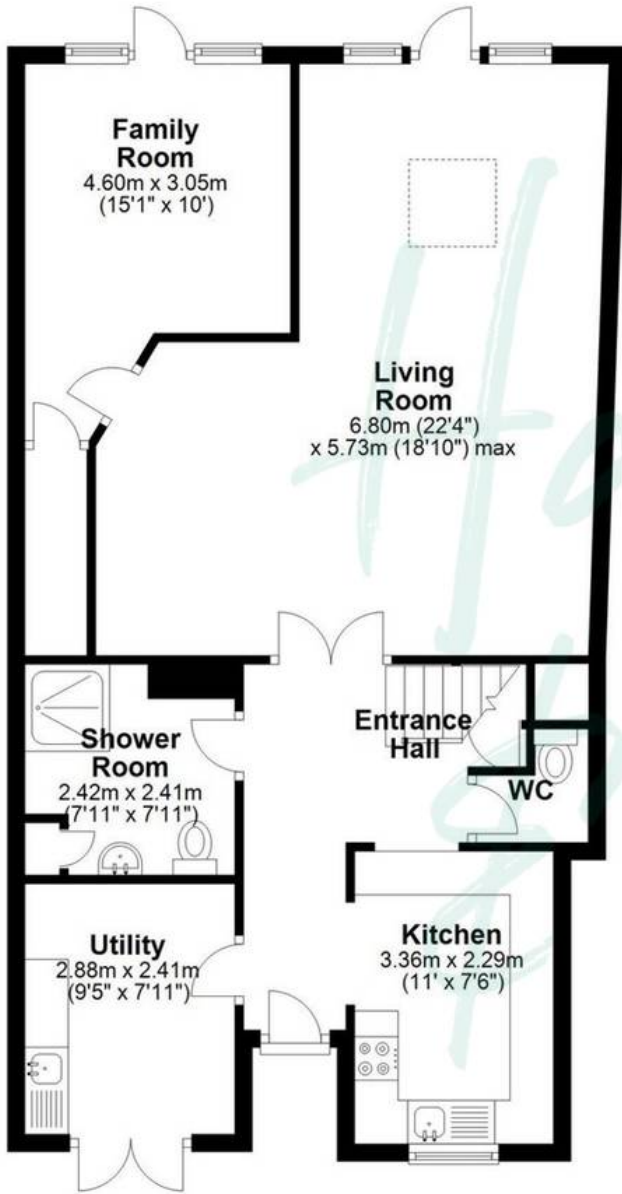
Hammond
& Smith



Hammond
& Smith

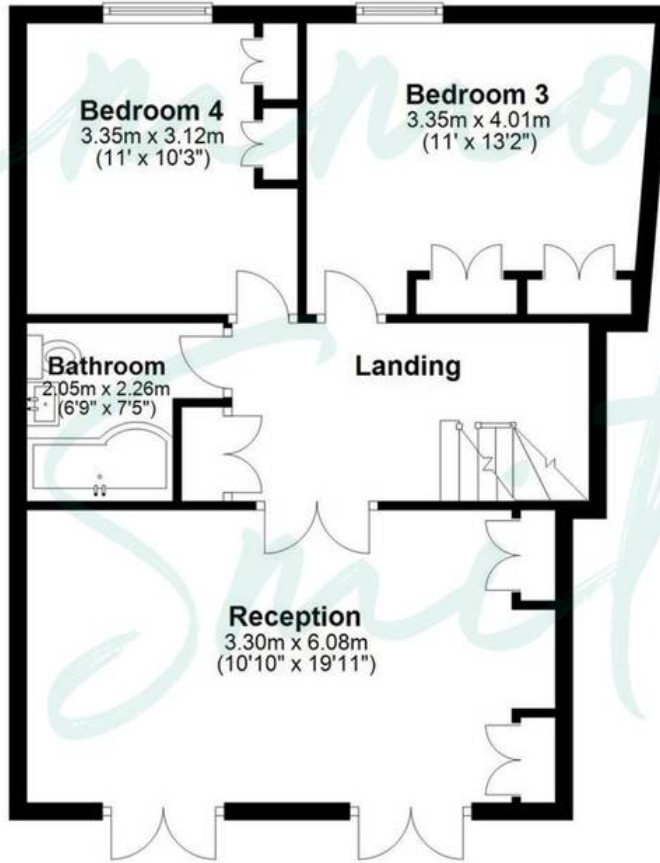
Ground Floor

Approx. 77.7 sq. metres (836.7 sq. feet)



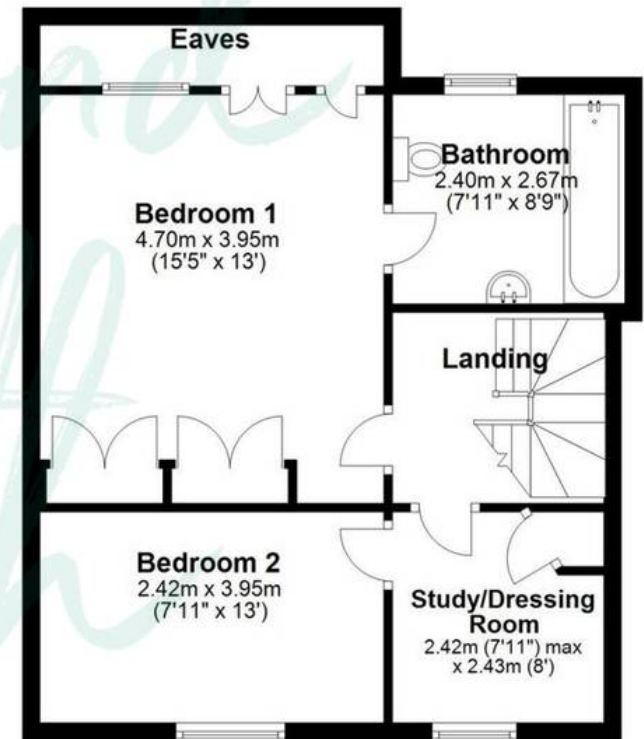
First Floor

Approx. 58.3 sq. metres (627.1 sq. feet)



Second Floor

Approx. 50.5 sq. metres (543.7 sq. feet)



Total area: approx. 186.5 sq. metres (2007.5 sq. feet)