

# 36 Buckingham Road

Epping, Essex

Guide Price £865,000

Council Tax band: F

Tenure: Freehold

- FOUR BEDROOM SEMI-DETACHED HOME
- SIDE ACCESS
- THREE MODERN BATHROOMS
- FULLY INTERGRATED KITCHEN & UTILITY
- WALK-IN WARDROBE TO PRIMARY BEDROOM
- CLOSE TO LOCAL SCHOOLS
- SHORT WALK TO HIGH STREET
- DOUBLE TANDEM GARAGE

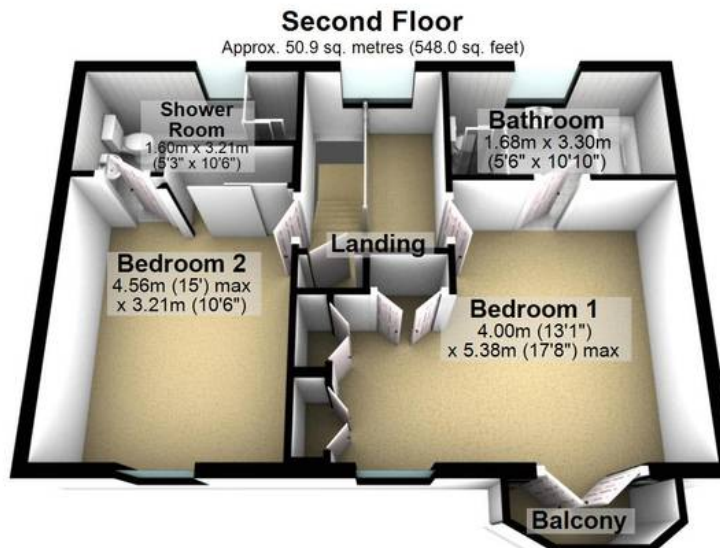
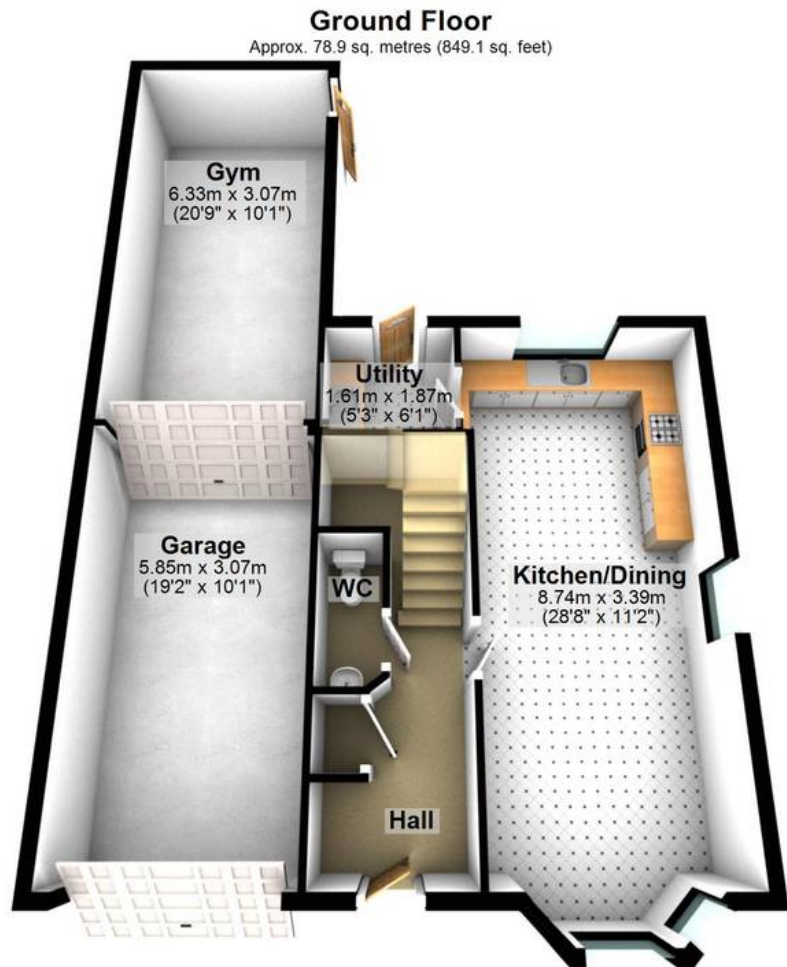


Full of class with a cohesive palette, every inch of this beautiful and expansive home has been thoughtfully designed. With its inviting exterior and setting, the Arboretum development provides an exclusive collection of homes - an area you'll be proud to call home. Inside, seamless spacious rooms are the perfect blank canvas for you to move straight in. It's the very essence of 'turnkey'. Across the ground floor sits a double tandem garage, with one area currently housing an ideal home gym. The ground floor is also home to a beautiful kitchen, with gloss cabinetry and integrated appliances, breakfast seating plus a spacious family dining area. What's more, a handy utility with access to the garden, helps to keep piles of laundry neatly out of sight. Completing the ground floor is a WC. Heading upstairs, the lounge provides a wonderful space to relax or entertain. You've also two bedrooms on this floor - one of which currently provides home to a perfect at-home work space. The family bathroom completes the first floor. Up on the top floor are two further bedrooms - both with en-suite bathrooms and fitted wardrobes. The primary of the two comes complete with a balcony and spacious en-suite - with both shower and tub for whatever takes your fancy!

Outside, the garden is a lovely spot that's blessed with low maintenance landscaping, lawn and patio areas. Think summer garden parties with all the family, or impromptu weekday barbies - this is a great space to enjoy.







Total area: approx. 180.2 sq. metres (1939.5 sq. feet)