

60 Higham View

North Weald, Epping

Council Tax band: D

Tenure: Freehold

- QUIET LOCATION
- IDEAL DOWNSIZE
- OFF ROAD PARKING
- KITCHEN/DINING ROOM
- CLOSE TO SHOPS AND TRANSPORT
- GAS CENTRAL HEATING
- MODERN KITCHEN
- LOW MAINTENANCE GARDEN



Porch

Living Room

17' 0" x 12' 0" (5.19m x 3.65m)

Kitchen/Dining Room

11' 10" x 8' 4" (3.61m x 2.55m)

Bedroom 1

12' 0" x 10' 0" (3.65m x 3.06m)

Bedroom 2

13' 7" x 8' 4" (4.15m x 2.55m)

Bedroom 3

16' 9" x 8' 4" (5.11m x 2.55m)

Bathroom

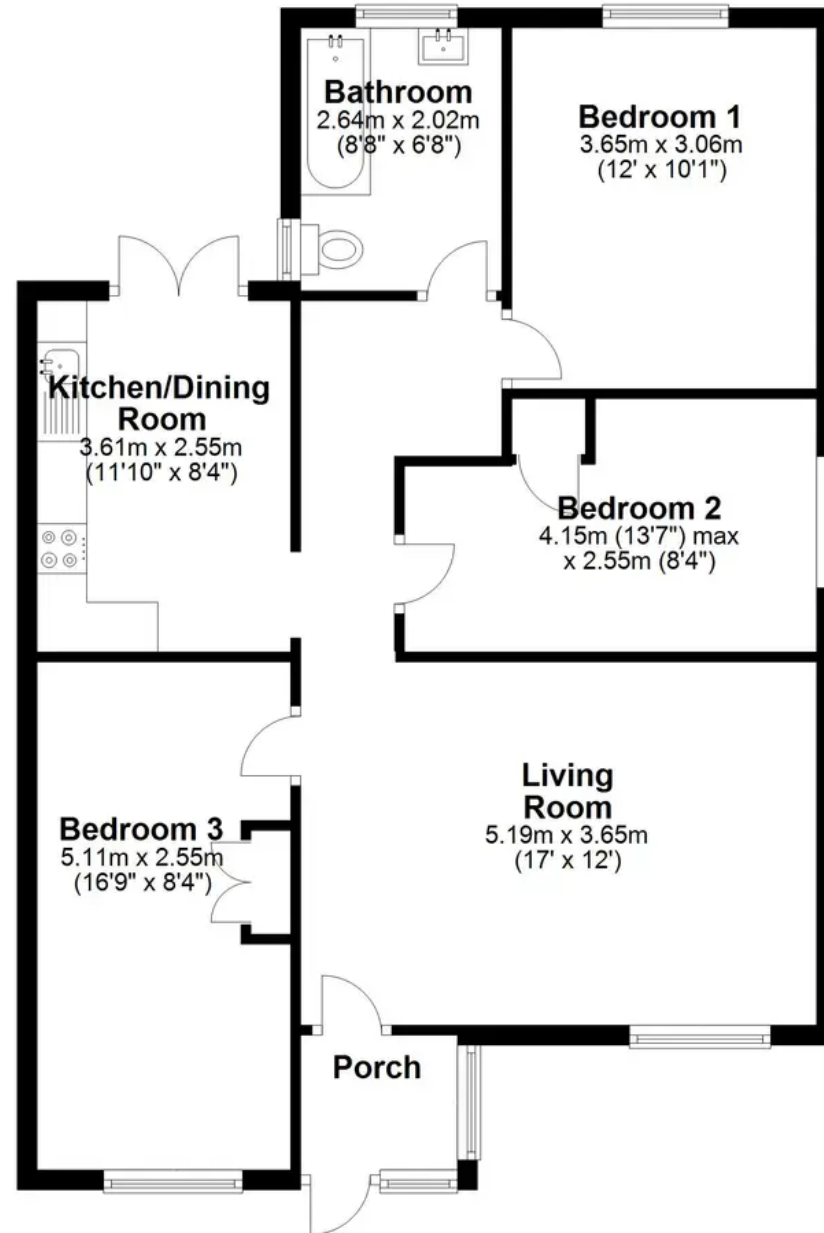
8' 8" x 6' 8" (2.64m x 2.02m)





Ground Floor

Approx. 77.7 sq. metres (836.6 sq. feet)



Total area: approx. 77.7 sq. metres (836.6 sq. feet)