

1 Spriggs Oak Palmers Hill

Epping, Epping

Completely elegant and oh-so-sleek, this two bedroom apartment is a real treat. Sitting on the ground floor of the impressive Spriggs Oak building moments away from Epping's vibrant high street, be prepared to be impressed by this one.

Council Tax band: C

Tenure: Share of Freehold

- GROUND FLOOR APARTMENT
- ESTABLISHED GARDENS
- PERIOD FEATURES
- PARKING AVAILABLE
- SHORT WALK TO HIGH STREET
- CLOSE TO EPPING STATION
- SHARE OF FREE HOLD
- EPC RATING D



Lounge/ Diner

22' 0" x 14' 0" (6.71m x 4.27m)

Kitchen

8' 9" x 7' 3" (2.66m x 2.22m)

Bedroom One

13' 3" x 12' 0" (4.04m x 3.66m)

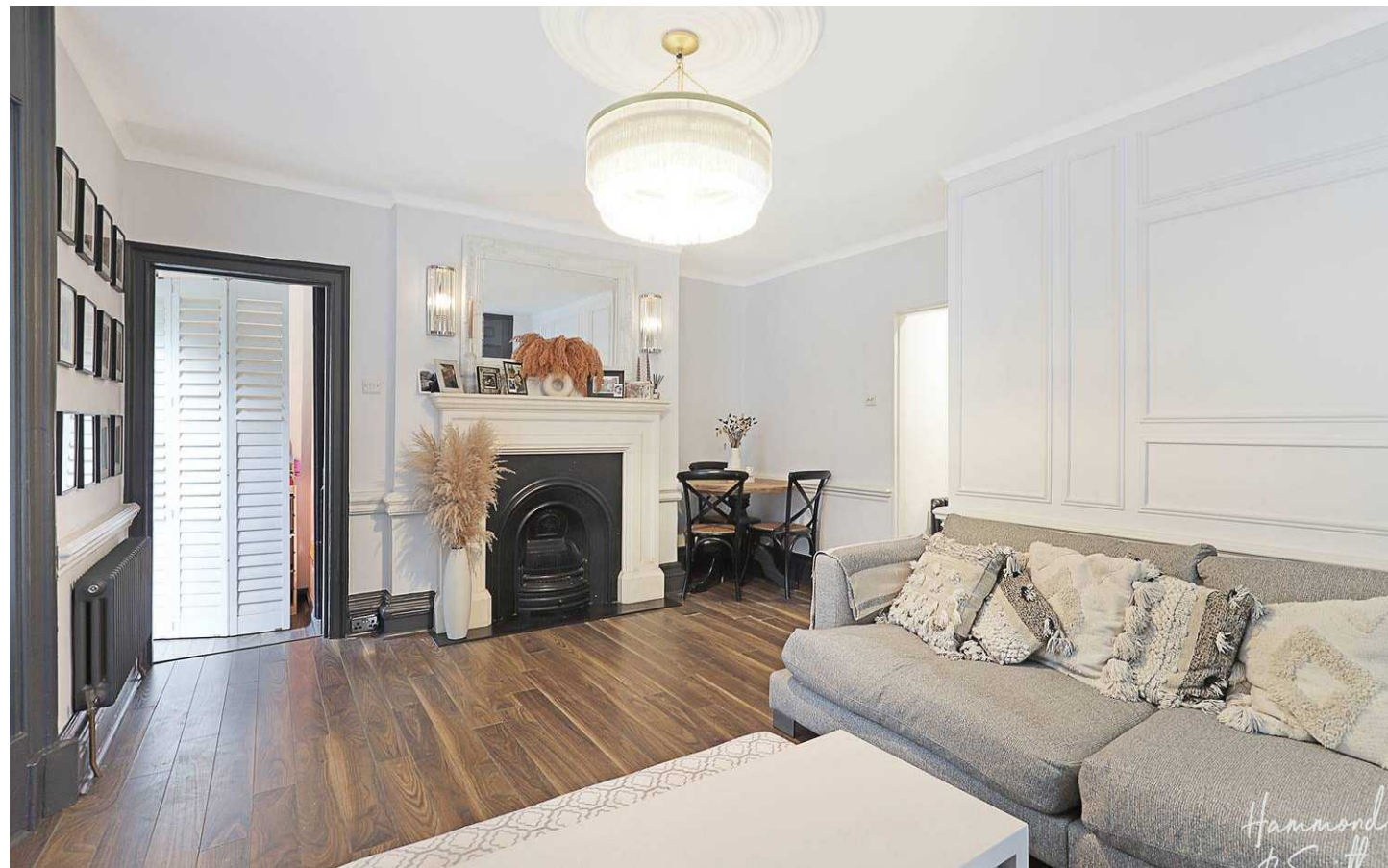
Bedroom Two

9' 6" x 8' 9" (2.90m x 2.66m)

Bathroom

6' 2" x 6' 0" (1.89m x 1.83m)

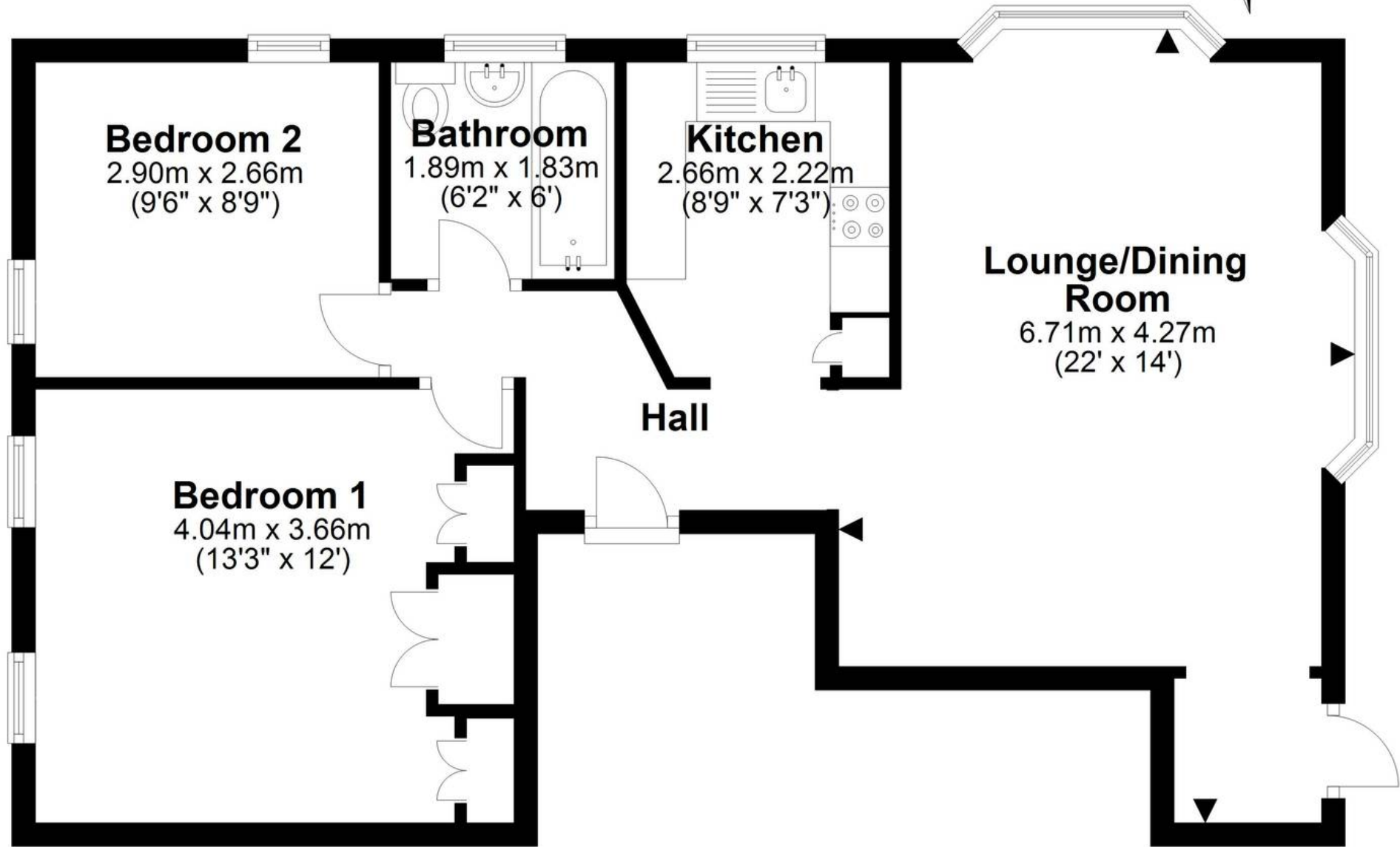
If you're looking for somewhere pretty that's stacked with period features and charm then be sure to look here. With a welcoming first impression, a smartly presented gravelled driveway leads the way to a spacious apartment that's been beautifully styled with a superb use of colour. Spriggs Oak is superbly placed in Epping where you can walk to everything you need. If outside space is in order, these apartments offer beautiful communal grounds, and there's also Stonards Park and of course the leafy canopy of the forest just a short walk away. If you're new to the area, on the weekend why not take a stroll down to Harleys and treat yourself to breakie followed by a browse around the shops. Or maybe catch the tube into London. Quite simply new adventures await you here!





Ground Floor

Approx. 59.2 sq. metres (636.9 sq. feet)



Total area: approx. 59.2 sq. metres (636.9 sq. feet)