

# 15 Green Close

Epping Green, Epping

Guide Price £475,000

Council Tax band: E

Tenure: Freehold

- FANTASTIC VIEWS TO REAR
- GARAGE AND OFF ROAD PARKING
- DOWNSTAIRS WC
- QUIET LOCATION
- GAS CENTRAL HEATING
- JULIET BALCONY



**Entrance Hall**

10' 10" x 3' 3" (3.30m x 1.00m)

**Wc**

5' 10" x 3' 3" (1.77m x 0.98m)

**Kitchen**

10' 11" x 8' 3" (3.33m x 2.51m)

**Lounge/ Diner**

15' 9" x 15' 7" (4.81m x 4.75m)

**First Floor**

9' 10" x 3' 3" (3.00m x 1.00m)

**Bedroom One**

8' 7" x 13' 5" (2.62m x 4.08m)

**Bedroom Two**

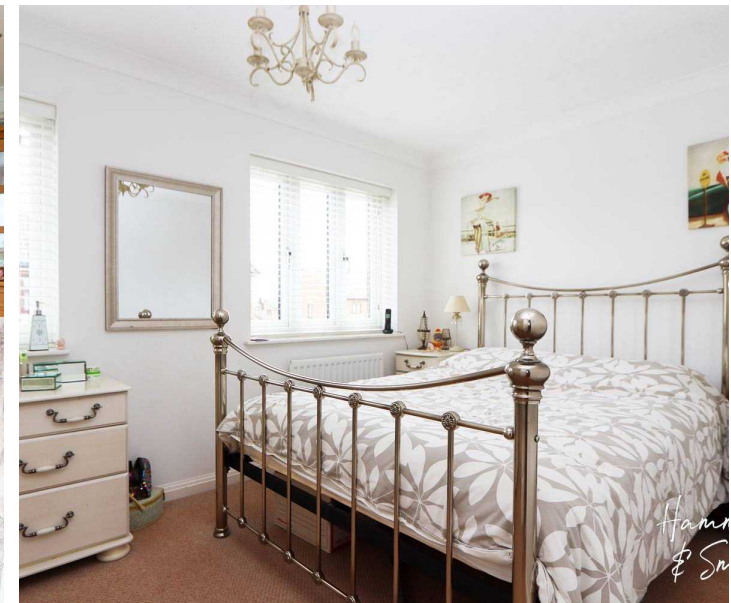
11' 11" x 9' 0" (3.64m x 2.75m)

**Bedroom Three**

8' 7" x 6' 4" (2.61m x 1.94m)

**Bathroom**

6' 3" x 5' 7" (1.90m x 1.70m)

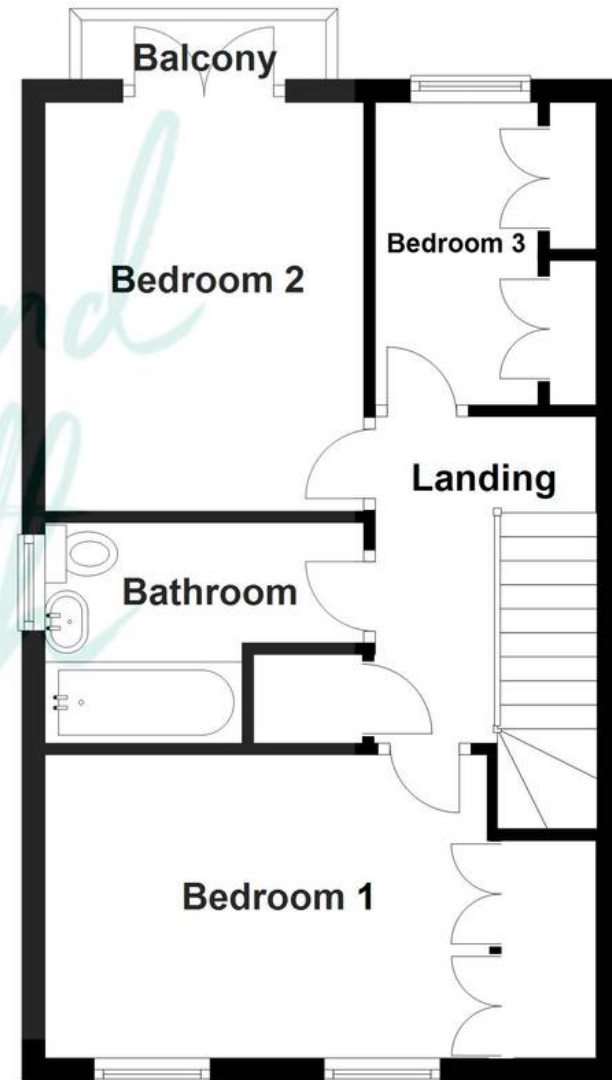




## Ground Floor



## First Floor



Floorplans are provided for guidance only. They are not to scale & must not form any part of a legal contract or be reproduced  
Plan produced using PlanUp.