

5, Eric Court

Crows Road, Epping

Guide Price £700,000

Council Tax band: H

Tenure: Freehold

- AIR SOURCE HEAT PUMPS
- OFF ROAD PARKING
- INTERGRATED KITCHENS
- EV CHARGING POINT
- SIDE ACCESS
- NEW BUILD READY TO GO NOW
- TWO MODERN BATHROOMS



Entrance Hall

17' 1" x 4' 7" (5.20m x 1.40m)

Kitchen/ Diner

17' 9" x 9' 9" (5.40m x 2.96m)

Wc

Lounge

12' 2" x 17' 0" (3.71m x 5.17m)

First Floor

Bedroom Two

11' 0" x 16' 11" (3.35m x 5.15m)

Bedroom Three

12' 2" x 8' 6" (3.70m x 2.60m)

Bedroom Four

12' 7" x 8' 3" (3.83m x 2.52m)

Bathroom

10' 0" x 6' 5" (3.06m x 1.95m)

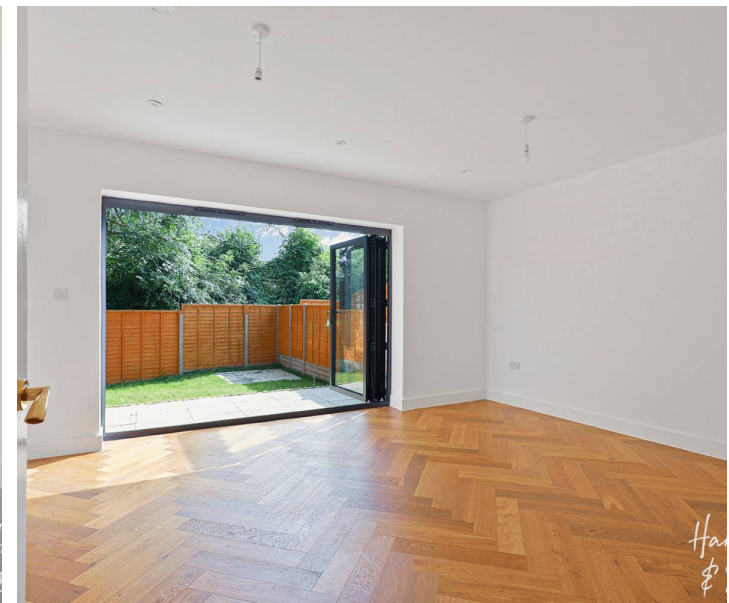
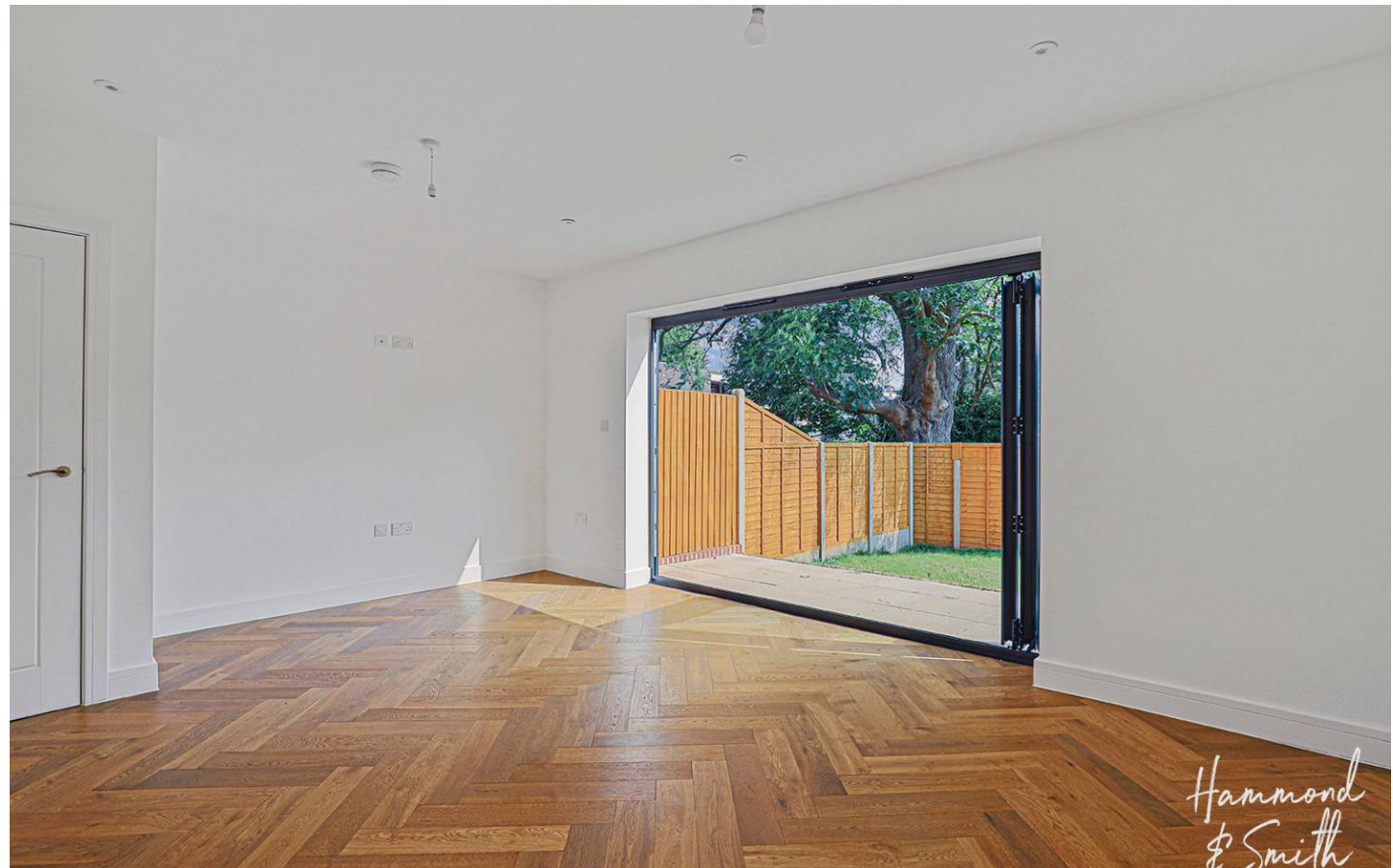
Top Floor

Bedroom One

16' 11" x 15' 3" (5.15m x 4.66m)

En-Suite Shower Room

8' 2" x 15' 1" (2.49m x 4.60m)





Hammon
& Smith



Hammon
& Smith



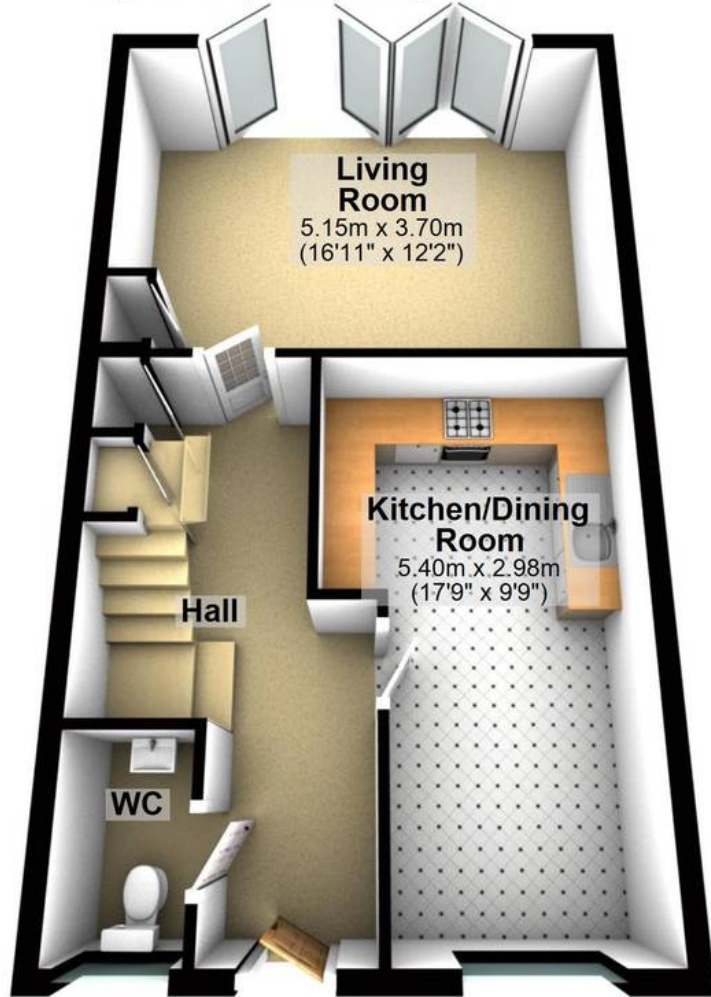
Hammon
& Smith



Hammon
& Smith

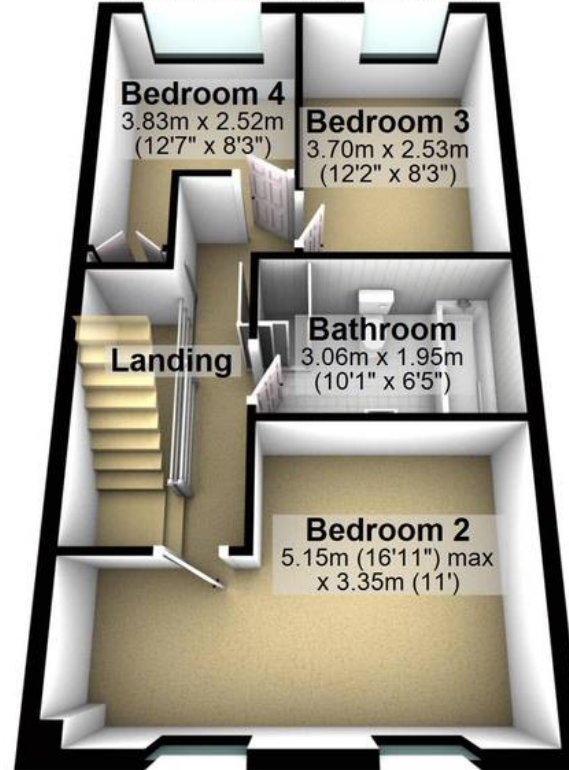
Ground Floor

Approx. 47.2 sq. metres (508.6 sq. feet)



First Floor

Approx. 47.3 sq. metres (509.5 sq. feet)



Second Floor

Approx. 37.4 sq. metres (403.0 sq. feet)



Total area: approx. 132.0 sq. metres (1421.1 sq. feet)