

43 Bassett Gardens

North Weald, Essex

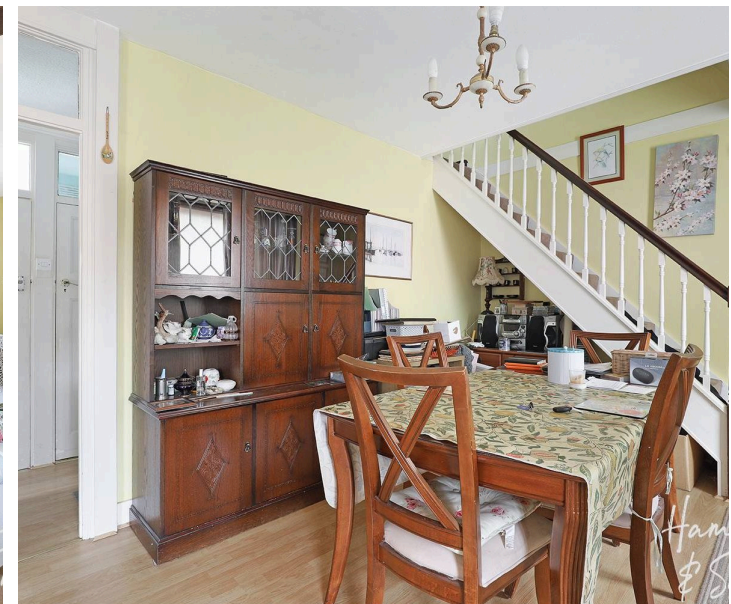
Guide Price £435,000

Nestled in a peaceful North Weald cul-de-sac, this chain free two bedroom chalet bungalow is flooded with potential. A must see!

Council Tax band: D

Tenure: Freehold

- SEMI DETACHED BUNGALOW
- DRIVEWAY PARKING
- CUL DE SAC LOCATION
- CLOSE TO SHOPS AND TRANSPORT
- LARGE BEDROOM WITH SHOWER AND DRESSING AREA



Lounge / Dining Room

27' 5" x 14' 0" (8.36m x 4.27m)

Kitchen

11' 7" x 8' 11" (3.53m x 2.72m)

Shower Room

5' 7" x 4' 9" (1.70m x 1.45m)

WC

Shower Room / Dressing Area

9' 1" x 9' 1" (2.77m x 2.77m)

Bedroom 1

9' 1" x 8' 11" (2.77m x 2.72m)

Storage

Bedroom 2

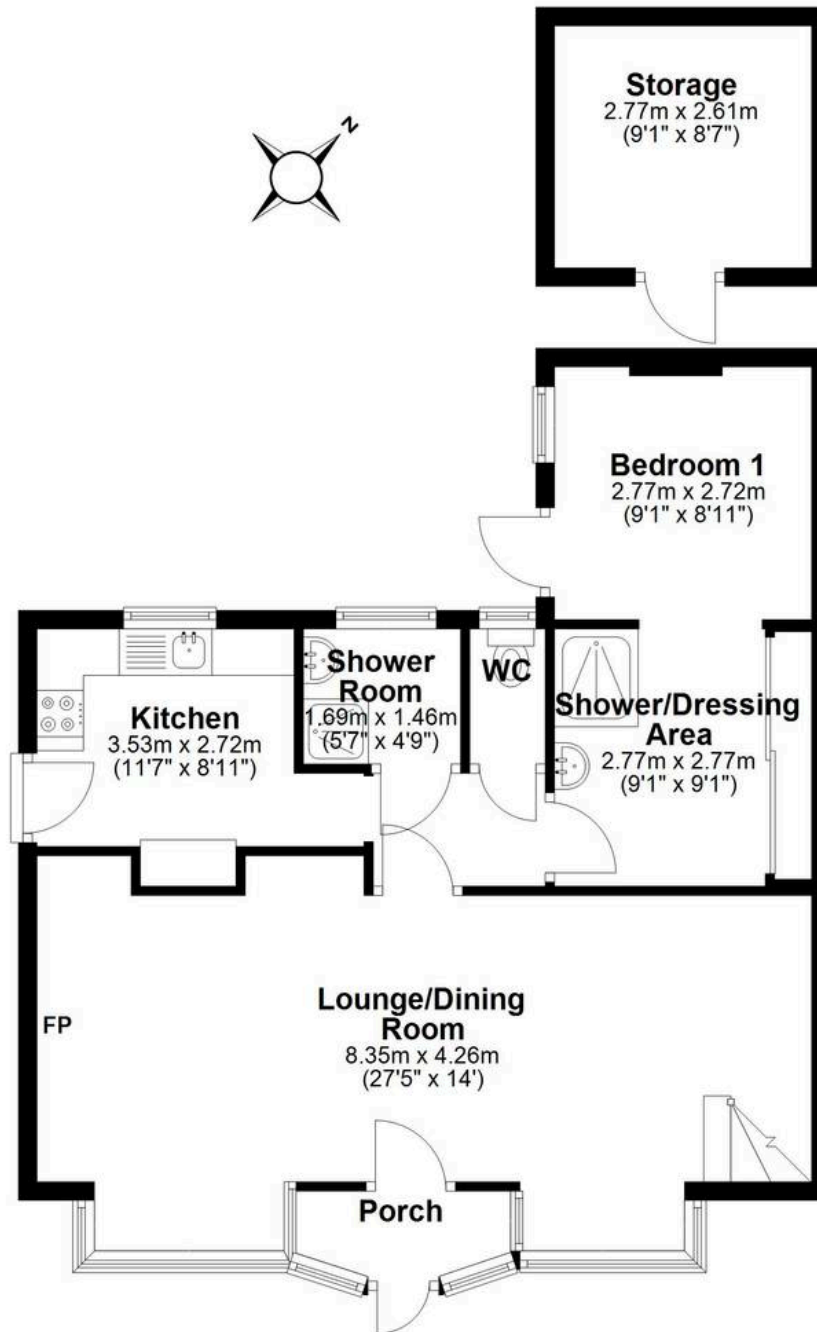
14' 10" x 11' 7" (4.52m x 3.53m)





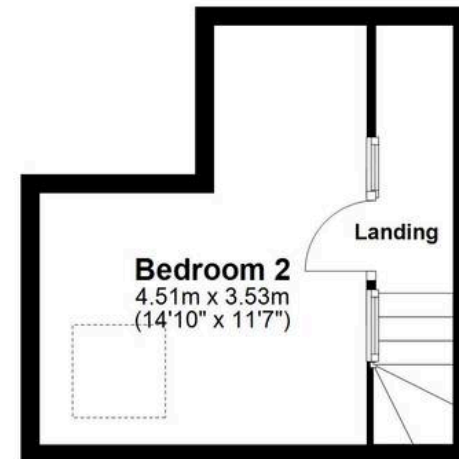
Ground Floor

Approx. 70.2 sq. metres (755.5 sq. feet)



First Floor

Approx. 16.7 sq. metres (180.0 sq. feet)



Total area: approx. 86.9 sq. metres (935.5 sq. feet)