

78 Coopersale Common

Coopersale, Essex

Guide Price £675,000

Beautifully designed throughout, this three bedroom semi-detached home sits in the heart of Coopersale. With spacious rooms, soft neutral décor and a delightful village location, this one's a keeper!

Council Tax band: C

Tenure: Freehold

Tenure: Freehold

- THREE DOUBLE BEDROOMS
- OFF STREET PARKING
- SEPERATE STUDY/PLAYROOM
- OPEN PLAN KITCHEN/DINER
- MODERN DECOR THROUGHOUT
- DESIRABLE LOCATION



Hammond & Smith



Hammond & Smith



Hammond & Smith



Front Door

Lounge

30' 10" x 11' 1" (9.39m x 3.38m)

Kitchen/ Diner

20' 10" x 16' 4" (6.35m x 4.99m)

Utility Room

6' 0" x 4' 10" (1.82m x 1.47m)

Study/ Playroom

9' 11" x 7' 11" (3.02m x 2.42m)

Downstairs Shower Room

8' 2" x 2' 8" (2.50m x 0.81m)

Stairs Leading To

Bedroom One

13' 9" x 9' 1" (4.20m x 2.78m)

Walk In Wardrobe

4' 6" x 4' 6" (1.37m x 1.36m)

En-Suite Shower Room

7' 10" x 4' 2" (2.39m x 1.27m)

Bedroom Two

11' 9" x 9' 3" (3.58m x 2.83m)

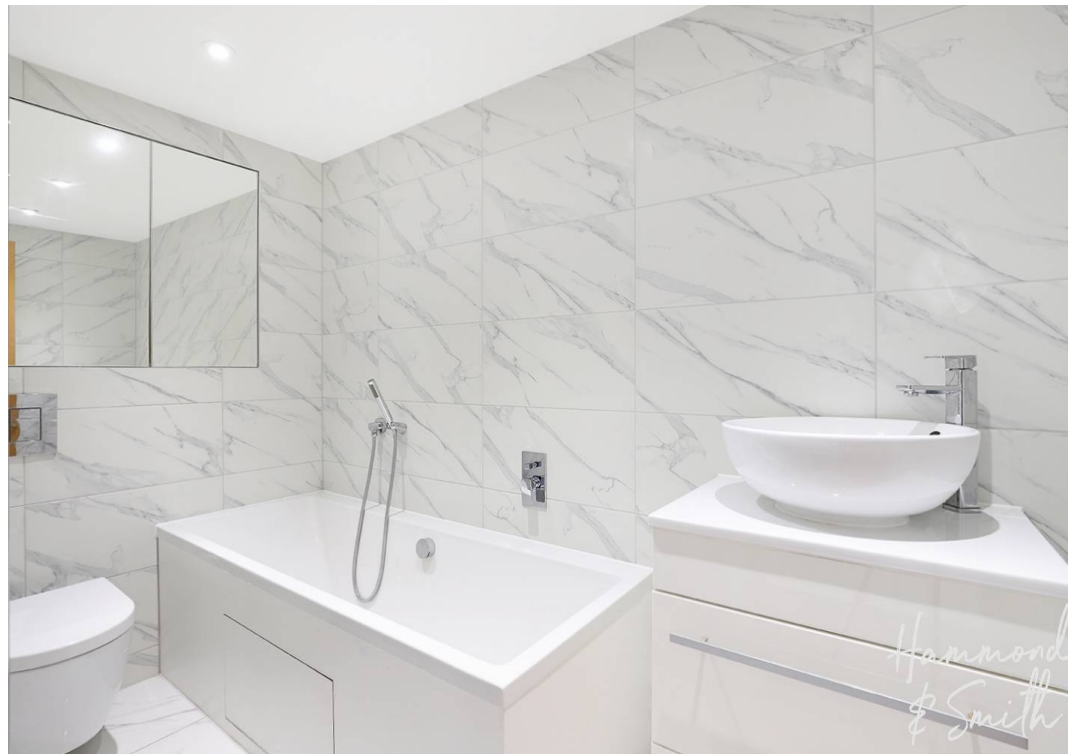
Bedroom Three

11' 2" x 9' 4" (3.41m x 2.85m)

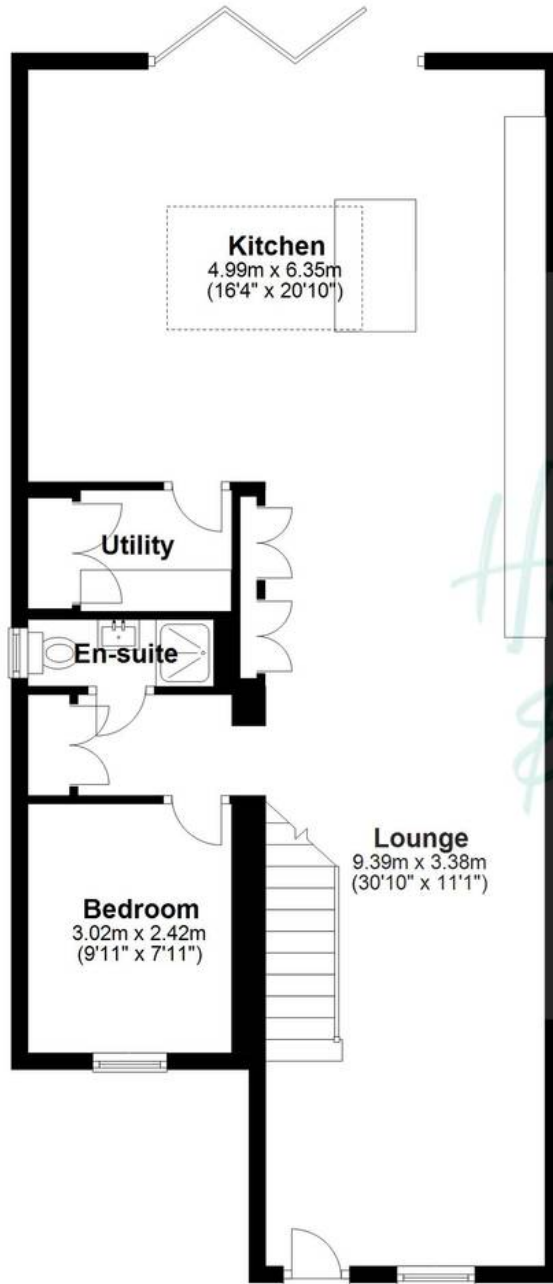
Family Bathroom

8' 8" x 4' 7" (2.65m x 1.40m)

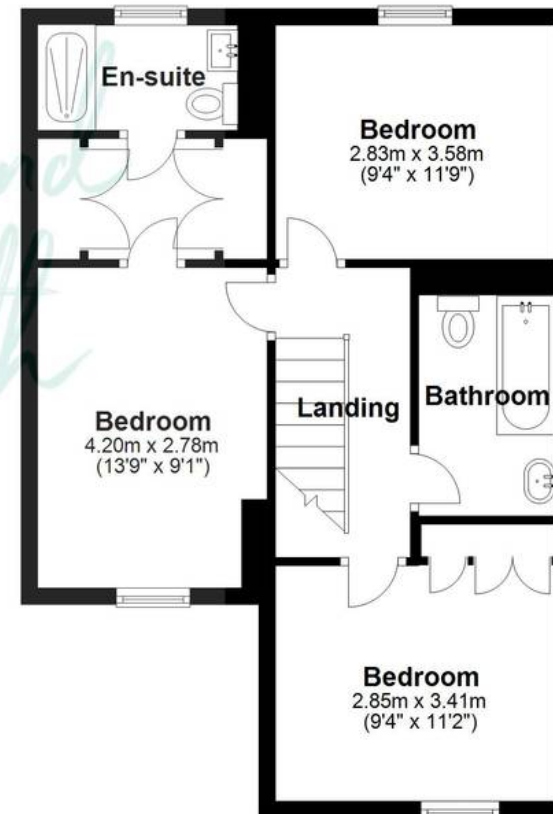




Ground Floor



First Floor



Total area: approx. 133.3 sq. metres (1434.4 sq. feet)

Floorplans are provided for guidance only. They are not to scale & must not form any part of a legal contract or be reproduced
Plan produced using PlanUp.