

Flat 2

291 High Street, Epping

Price: Offers Over £350,000

Utterly gorgeous, this two bedroom chain free duplex apartment sits right in the heart of Epping. A home and location with a heart, and you cannot help but be impressed!

Council Tax band: C

Tenure: Leasehold

- LUXURY DUPLEX
- MODERN SHOWER ROOM
- HIGH STREET LOCATION
- GATED SECURITY ENTRY SYSTEM
- TWO DOUBLE BEDROOMS
- OPEN PLAN LIVING
- EN-SUITE BATHROOM
- BESPOKE FITTED KITCHEN



Hammond & Smith

Hammond & Smith

Gated Entry

Communal Entrance

Front Door

Entrance Hall

Open Plan Living

18' 7" x 17' 0" (5.66m x 5.18m)

Shower Room

5' 0" x 6' 0" (1.52m x 1.83m)

Stairs Leading To

Bedroom One

17' 5" x 9' 5" (5.31m x 2.87m)

En-Suite Bathroom

8' 0" x 5' 0" (2.44m x 1.52m)

Bedroom Two

9' 4" x 7' 6" (2.84m x 2.29m)





Hammond
& Smith



Hammond
& Smith



Hammond
& Smith

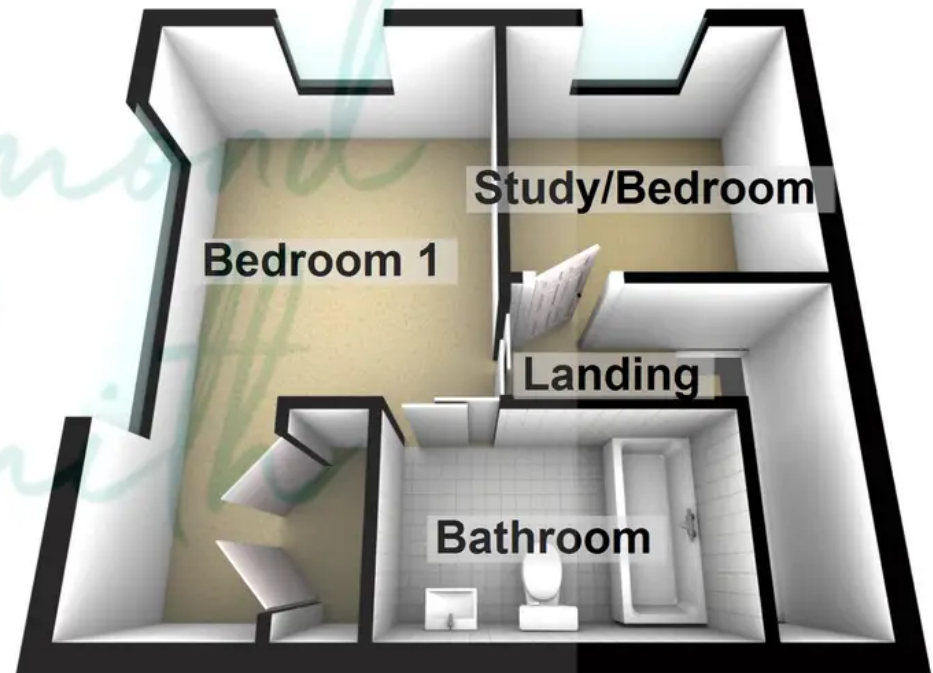


Hammond
& Smith

Ground Floor



First Floor



Floorplans are provided for guidance only. They are not to scale & must not form any part of a legal contract or be reproduced
Plan produced using PlanUp.