

22 Lindsey Street

Epping, Essex

Offers Over £925,000

Tenure: Freehold

- PERIOD FEATURES THROUGHOUT
- WINE CELLAR
- OFF ROAD PARKING WITH GARAGE
- THREE BATHROOMS
- IN EXCESS OF 1600 SQFT
- FIVE BEDROOM FAMILY HOME
- SHORT WALK TO HIGH STREET
- TWO GARDENS



Entrance Hall

Lounge

14' 11" x 14' 1" (4.54m x 4.28m)

Family Room

13' 7" x 12' 10" (4.15m x 3.92m)

Kitchen/ Dining Room

23' 4" x 10' 6" (7.11m x 3.19m)

Utility Room

5' 3" x 10' 2" (1.60m x 3.10m)

Wc

5' 3" x 5' 3" (1.60m x 1.60m)

First Floor

Bedroom

12' 11" x 8' 11" (3.93m x 2.72m)

En-Suite Shower Room

5' 3" x 9' 1" (1.59m x 2.77m)

Bedroom

10' 9" x 8' 11" (3.28m x 2.73m)

Bedroom

12' 1" x 5' 9" (3.69m x 1.74m)

Bedroom/ Study

12' 1" x 5' 8" (3.69m x 1.73m)

Bathroom

5' 3" x 10' 0" (1.59m x 3.05m)

Second Floor Bedroom

17' 7" x 12' 3" (5.37m x 3.74m)

Shower Room

6' 0" x 5' 5" (1.84m x 1.66m)





Hammond & Smith



Hammond & Smith

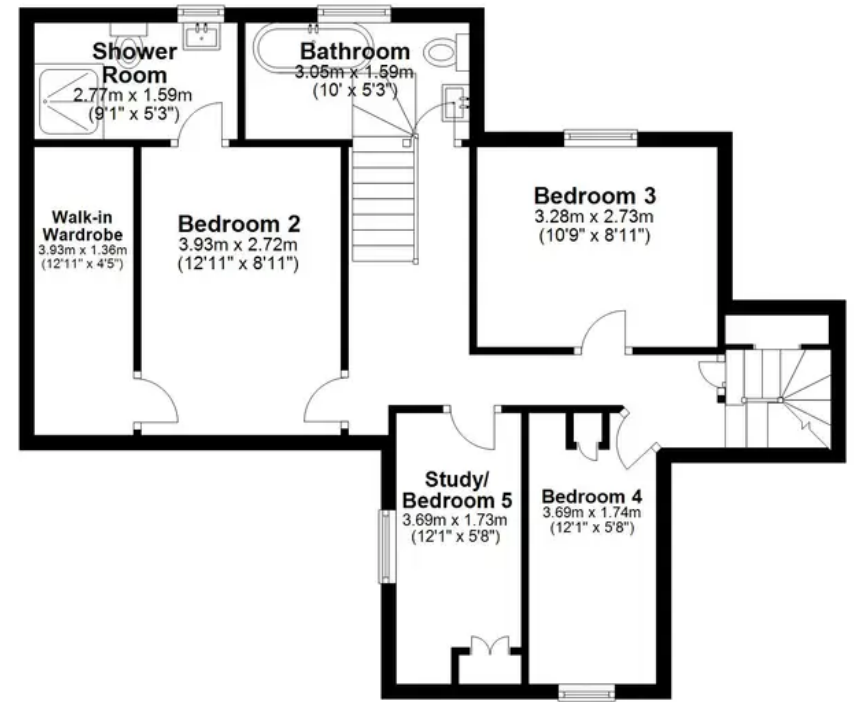


Hammond & Smith

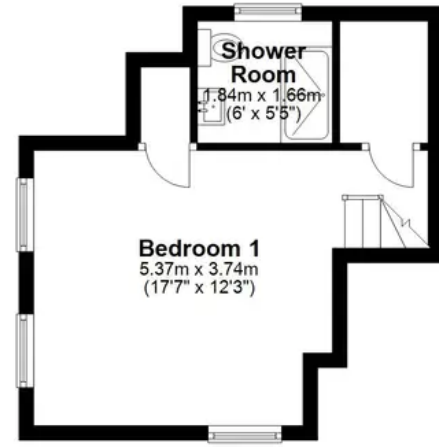


Hammond & Smith

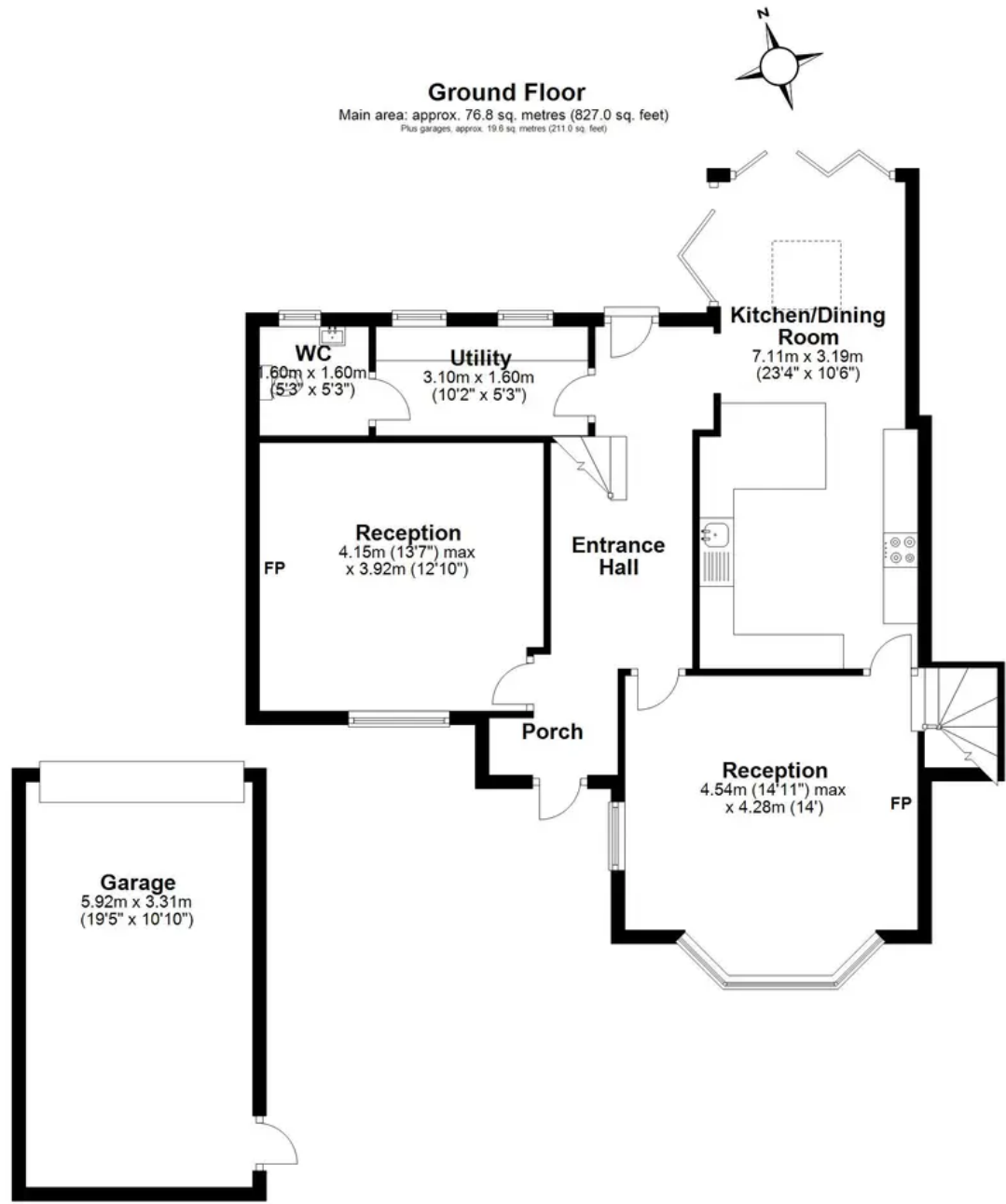
First Floor
Approx. 61.5 sq. metres (662.3 sq. feet)



Second Floor
Approx. 23.0 sq. metres (247.1 sq. feet)



Ground Floor
Main area: approx. 76.8 sq. metres (827.0 sq. feet)
Plus garages, approx. 19.6 sq. metres (211.0 sq. feet)



Main area: Approx. 161.3 sq. metres (1736.4 sq. feet)
Plus garages, approx. 19.6 sq. metres (211.0 sq. feet)