

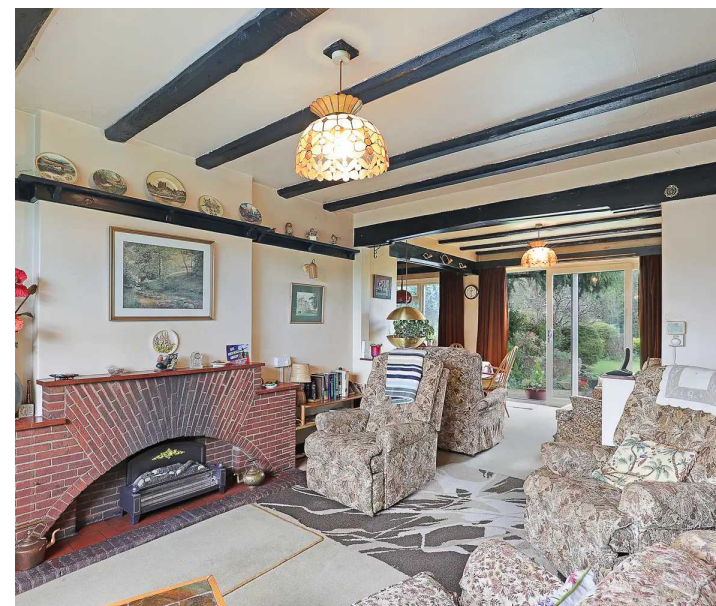
32 Forest Glade

North Weald, Epping

Council Tax band: G

Tenure: Freehold

- 5 BEDROOM FAMILY HOME
- POTENTIAL TO EXTEND
- BACKING ONTO WOODLAND
- OFF ROAD PARKING
- DOUBLE GLAZED
- GAS CENTRAL HEATING
- DOWNSTAIRS WC



Entrance Hall

Lounge Area

14' 1" x 12' 0" (4.30m x 3.67m)

Dining Area

18' 3" x 10' 2" (5.55m x 3.10m)

Kitchen

11' 6" x 10' 2" (3.50m x 3.10m)

Wc

First Floor

Bedroom One

13' 11" x 12' 10" (4.23m x 3.91m)

Bedroom Two

12' 0" x 6' 11" (3.65m x 2.11m)

Bedroom Three

9' 5" x 8' 1" (2.86m x 2.46m)

Bedroom Four

9' 5" x 8' 1" (2.86m x 2.46m)

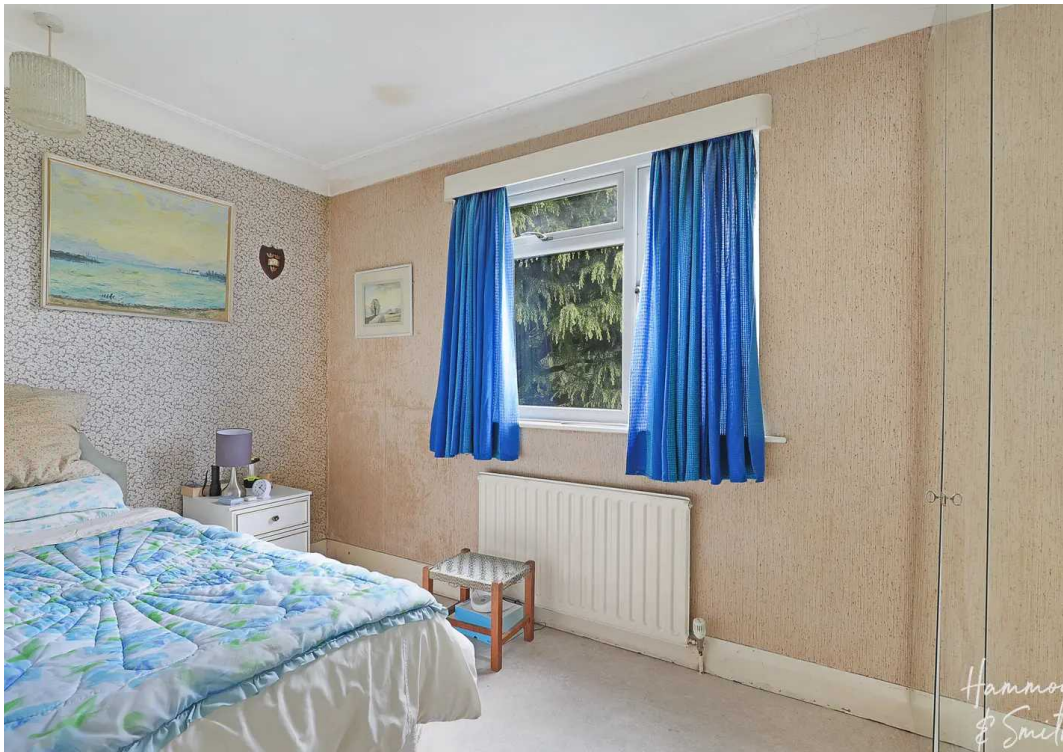
Bedroom Five

8' 11" x 6' 4" (2.73m x 1.94m)

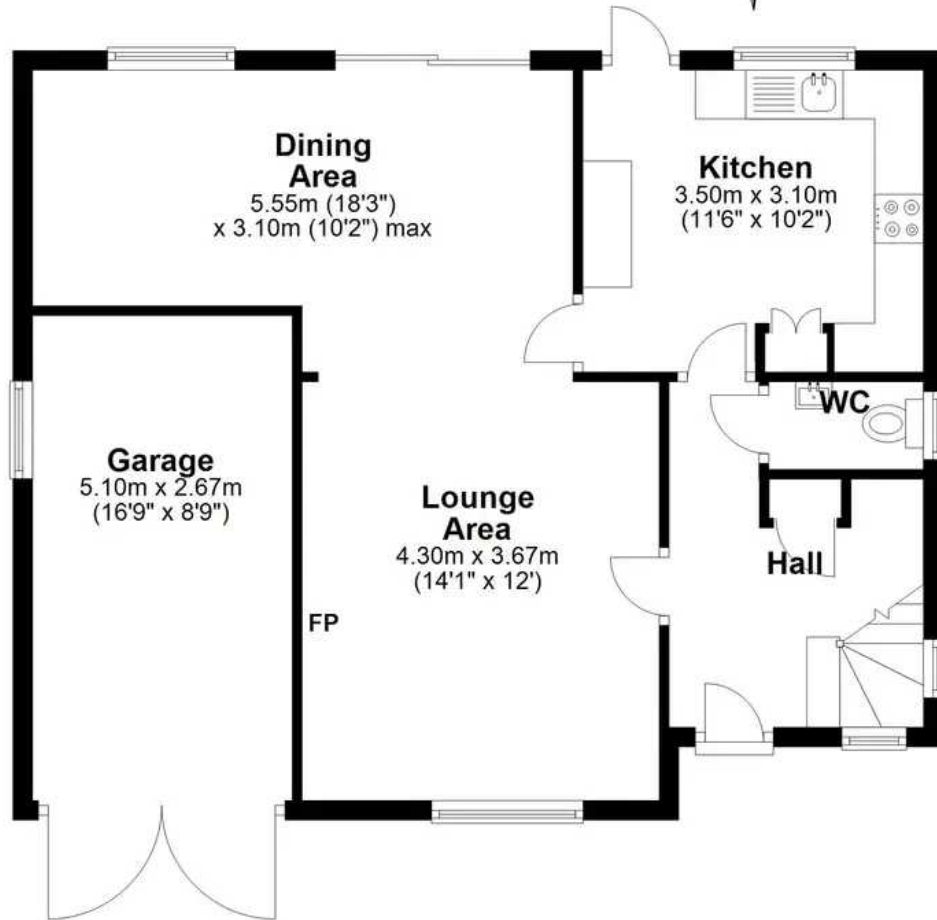
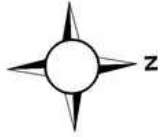
Bathroom

10' 2" x 8' 11" (3.10m x 2.73m)

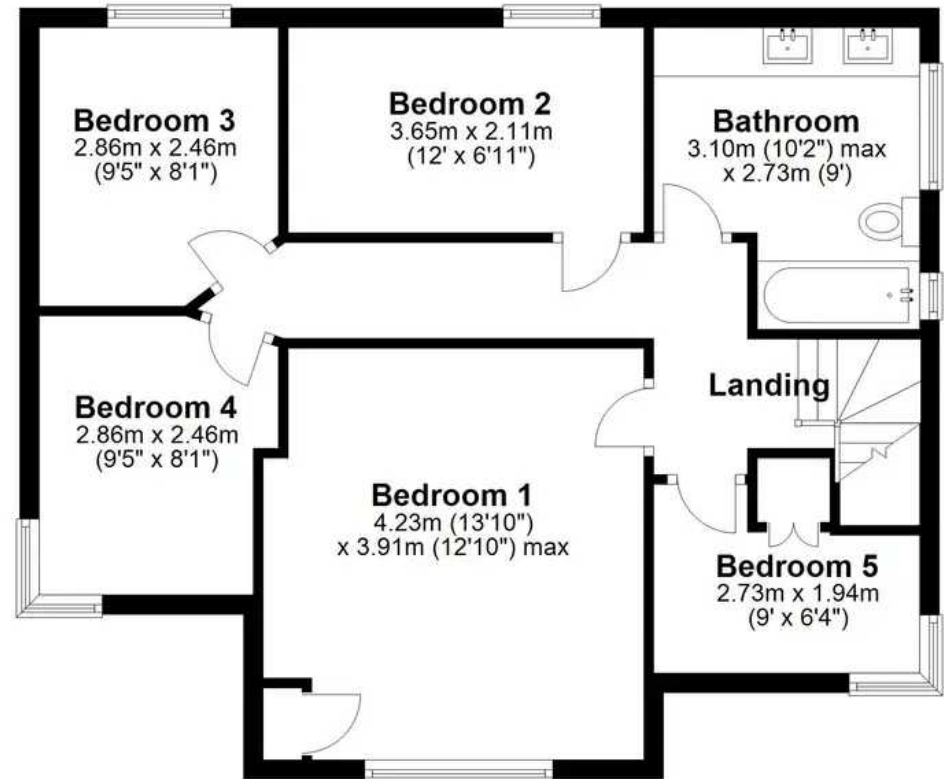




Ground Floor
Approx. 66.9 sq. metres (719.8 sq. feet)



First Floor
Approx. 62.3 sq. metres (670.7 sq. feet)



Total area: approx. 129.2 sq. metres (1390.5 sq. feet)