

# Apartment 1

Linden House, Epping

A gorgeous two bedroom ground floor apartment in the super spot of Centre Drive, Epping. Sleek, spacious and mere moments from Epping's Underground station, this place ticks the box.

Council Tax band: E

Tenure: Leasehold

- MODERN APARTMENT
- GROUND FLOOR
- TWO ALLOCATED PARKING SPACES
- TELEPHONE ENTRY SYSTEM
- EN-SUITE SHOWER ROOM
- FULLY FITTED KITCHEN
- GARDEN SPACE



**Communal Entrance**

**Front Door**

**Entrance Hallway**

**Kitchen/Living/Dining**  
29' 7" x 19' 8" (9.03m x 6.00m)

**Bedroom One**  
10' 8" x 10' 8" (3.26m x 3.24m)

**Shower Room**  
6' 8" x 5' 1" (2.03m x 1.54m)

**Bedroom Two**  
10' 8" x 9' 7" (3.26m x 2.93m)

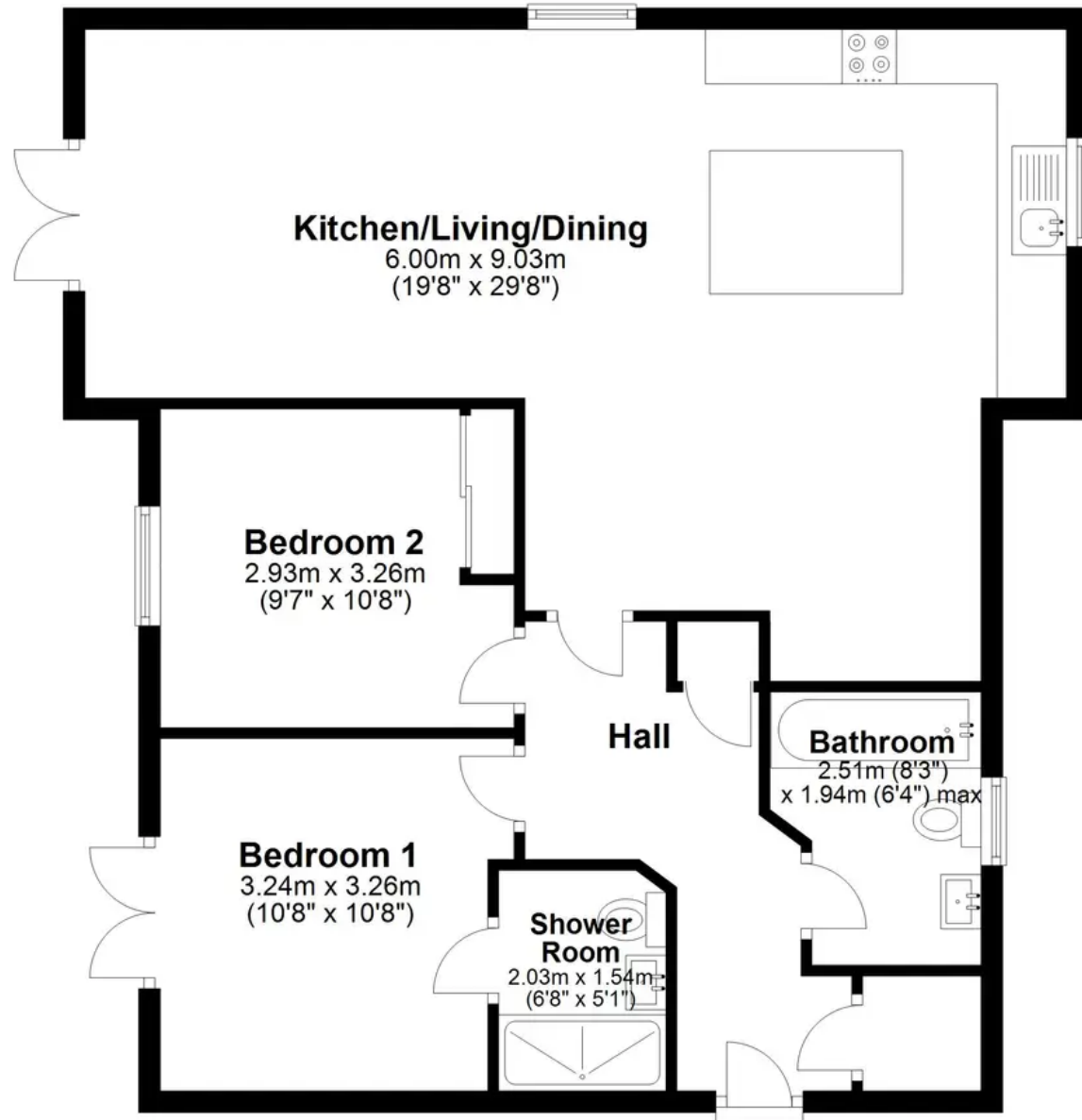
**Family Bathroom**  
8' 3" x 6' 4" (2.51m x 1.94m)





# Ground Floor

Approx. 78.8 sq. metres (848.3 sq. feet)



Total area: approx. 78.8 sq. metres (848.3 sq. feet)