

53 Tycehurst Hill

Loughton, Loughton

Offers Over £1,350,000

Council Tax band: G

Tenure: Freehold

- FOUR DOUBLE BEDROOMS
- POTENTIAL TO EXTEND
- UTILITY ROOM
- SHORT WALK TO HIGH STREET
- CLOSE TO STATION
- OFF ROAD PARKING
- POPULAR LOCATION
- EPC RATING D



Entrance hall

Wc

Living Room

14' 2" x 15' 6" (4.33m x 4.73m)

Lounge/ Diner

23' 2" x 14' 9" (7.07m x 4.49m)

Kitchen/ Breakfast Room

18' 8" x 16' 11" (5.69m x 5.15m)

Utility Room

10' 6" x 7' 3" (3.20m x 2.21m)

Landing

Bedroom One

14' 6" x 14' 9" (4.42m x 4.50m)

Bedroom Two

13' 6" x 14' 9" (4.12m x 4.50m)

Bedroom Three

16' 1" x 8' 4" (4.90m x 2.55m)

Bedroom Four

12' 6" x 8' 6" (3.82m x 2.58m)

Bathroom

10' 6" x 6' 9" (3.20m x 2.05m)

Shower Room

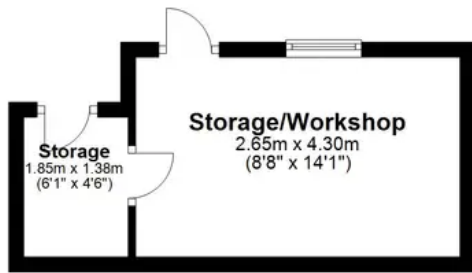
5' 4" x 6' 8" (1.63m x 2.03m)





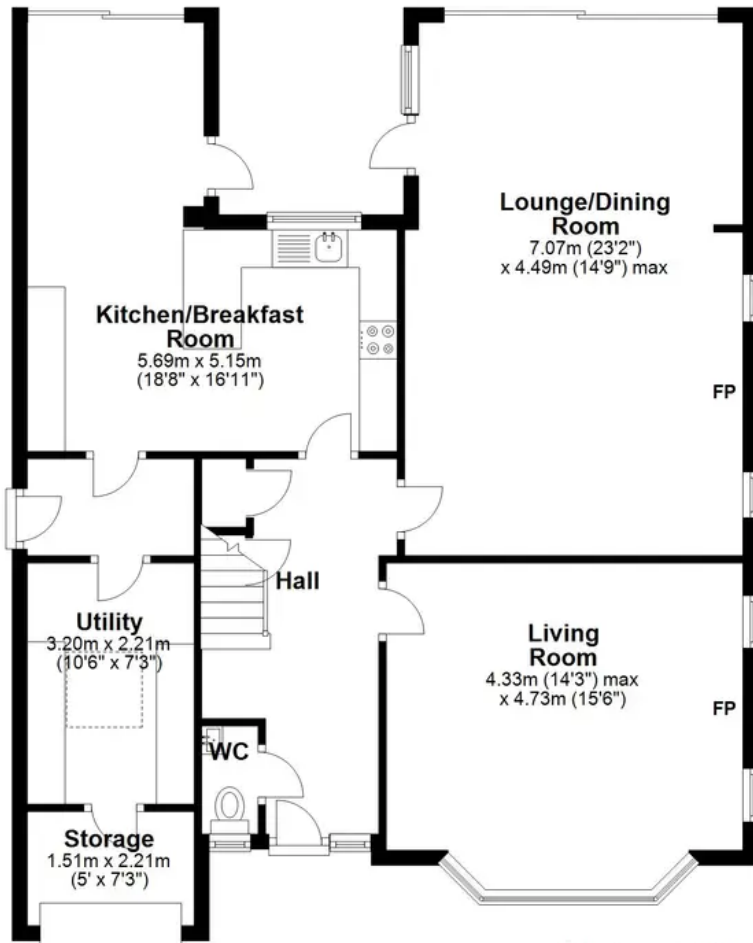
Lowest Ground Floor

Approx. 14.1 sq. metres (152.1 sq. feet)



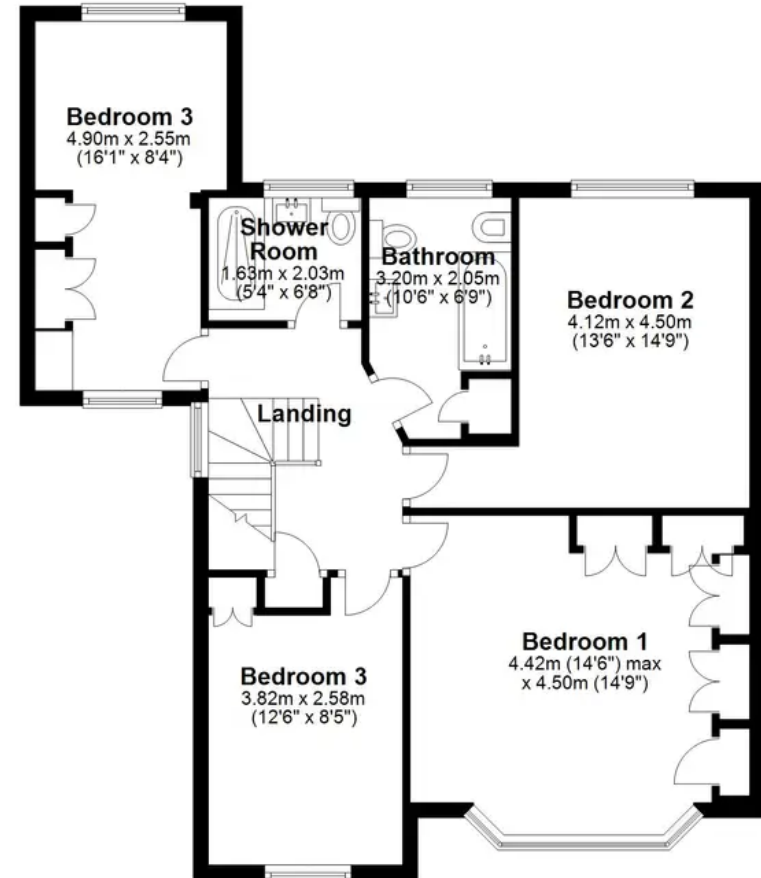
Ground Floor

Approx. 98.7 sq. metres (1062.1 sq. feet)



First Floor

Approx. 72.2 sq. metres (777.0 sq. feet)



Total area: approx. 185.0 sq. metres (1991.3 sq. feet)