

13 Lower Bury Lane

Epping, Essex

****£1,450,000 - £1,500,000**** Peacefully tucked away within Epping's desirable Lower Bury Road, sits this four bedroom forever family home. One of a kind and the very essence of 'turnkey', this home is a real beaut.

Council Tax band: F

Tenure: Freehold

- OFF ROAD PARKING FOR MULTIPLE CARS
- OPEN PLAN TO REAR
- FOUR DOUBLE BEDROOMS
- SOUTH FACING GARDEN
- HIGHLY SOUGHT AFTER LOCATION
- IN EXCESS OF 2000SQFT
- GREAT STORAGE THROUGHOUT



Entrance Hall

Living Room

17' 10" x 11' 11" (5.43m x 3.64m)

Kitchen/ Diner

15' 10" x 31' 6" (4.82m x 9.60m)

Utility Room

9' 8" x 10' 11" (2.95m x 3.34m)

Wc

First Floor

Bedroom One

19' 1" x 10' 11" (5.82m x 3.34m)

En-suite Shower Room

5' 9" x 10' 11" (1.76m x 3.34m)

Bedroom Two

12' 0" x 10' 11" (3.65m x 3.33m)

Bedroom Three

12' 0" x 8' 11" (3.65m x 2.73m)

Bedroom Four

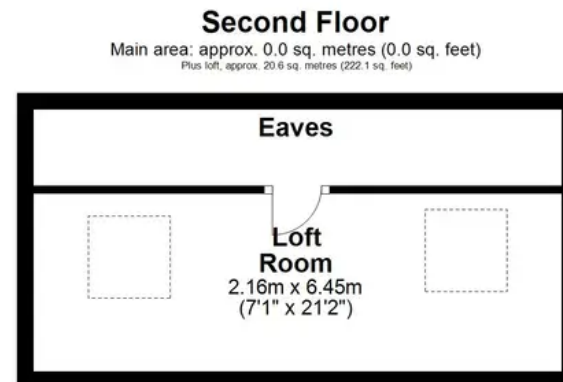
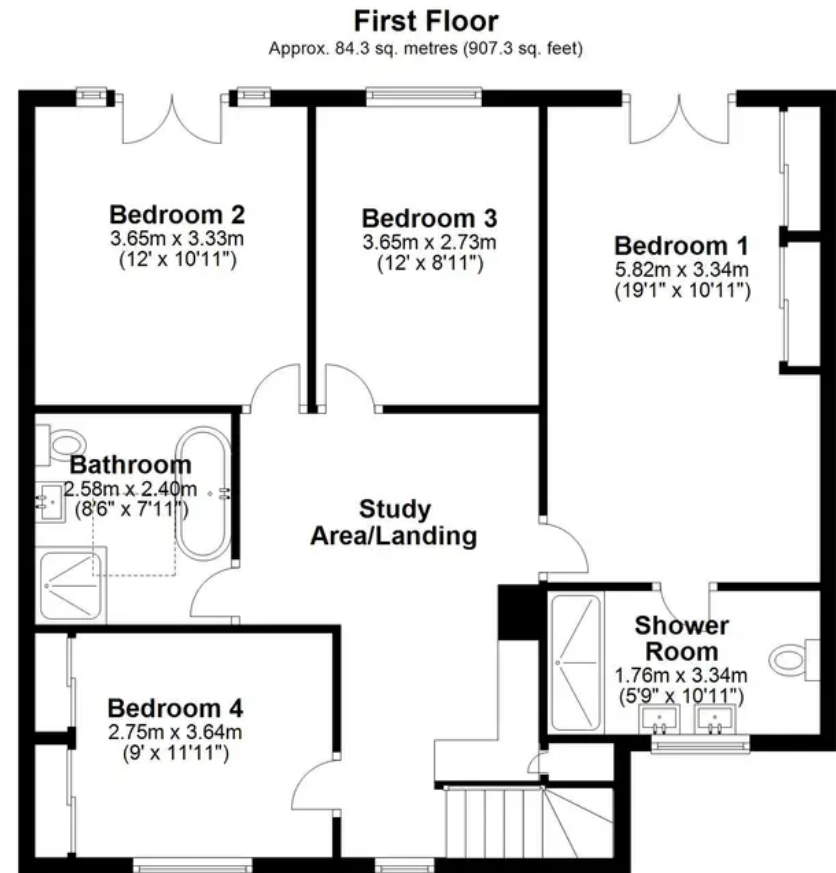
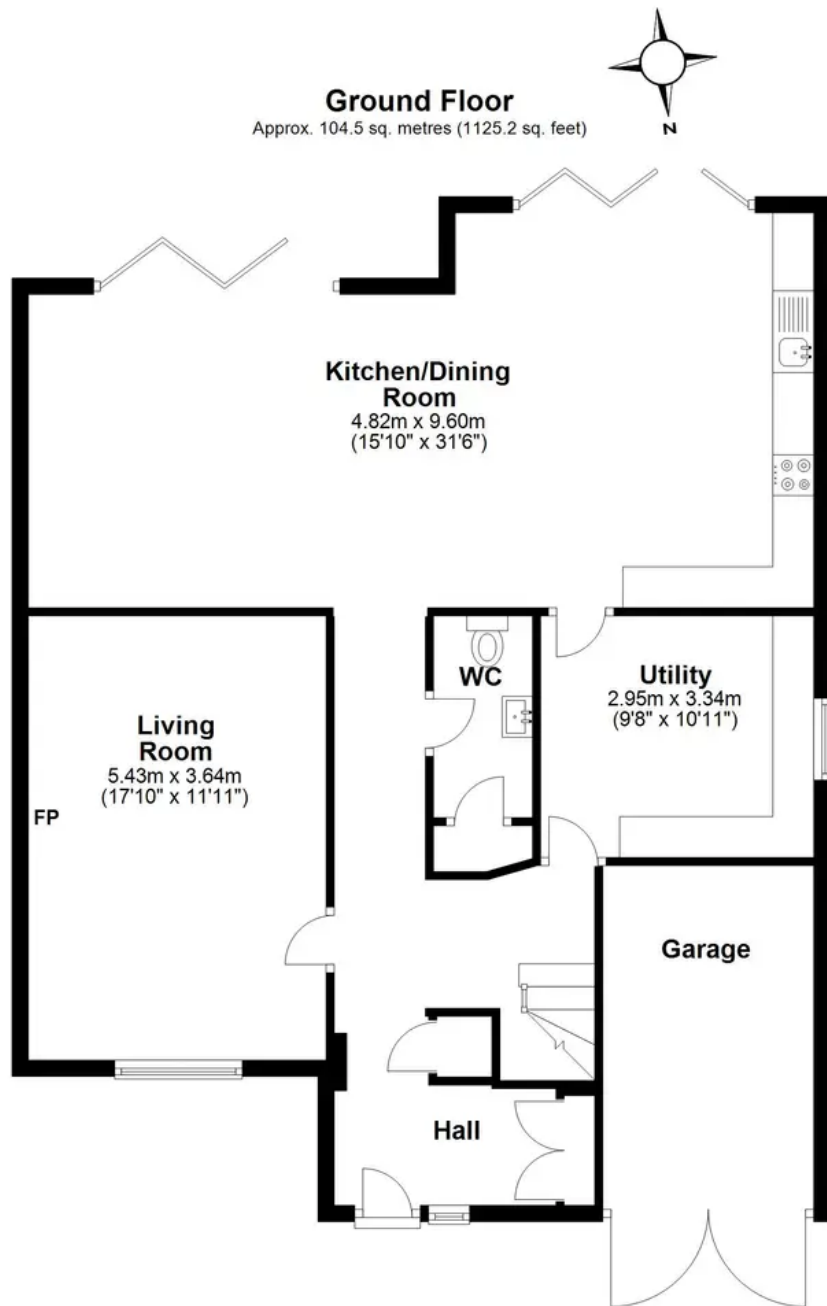
9' 0" x 11' 11" (2.75m x 3.64m)

Family Bathroom

8' 6" x 7' 10" (2.58m x 2.40m)







Main area: Approx. 188.8 sq. metres (2032.5 sq. feet)
Plus loft, approx. 20.6 sq. metres (222.1 sq. feet)