
GUN HILL
— HOUSE —

AT GUN HILL PARK
THE WELLESLEY ESTATE | ALDERSHOT

Weston
Homes 

— GUN HILL —
— HOUSE —
AT GUN HILL PARK
THE WELLESLEY ESTATE | ALDERSHOT

AN EXQUISITE COLLECTION OF 17
LUXURIOUS CONVERTED HOMES, SITUATED
IN THE HEART OF THE WELLESLEY ESTATE

OFFERING A RANGE OF ELEGANT
2 AND 3 BEDROOM APARTMENTS



PLOT **83** BEDS **3** LEVEL **GF**

OVERALL SIZE - 88.5 M² | 952 FT²

PLOTS **84** **85** BEDS **3**

OVERALL SIZE - 112.8 M² | 1215 FT²



| | | |
|--------------------------------|-------------|----------------|
| Living / Kitchen / Dining Area | 7.2m x 8.1m | 23'8" x 26'10" |
| Principal Bedroom | 3.3m x 3.1m | 11'1" x 10'6" |
| Bedroom 2 | 3.6m x 3.1m | 12'0" x 10'4" |
| Bedroom 3 | 3.6m x 3m | 12'0" x 9'10" |



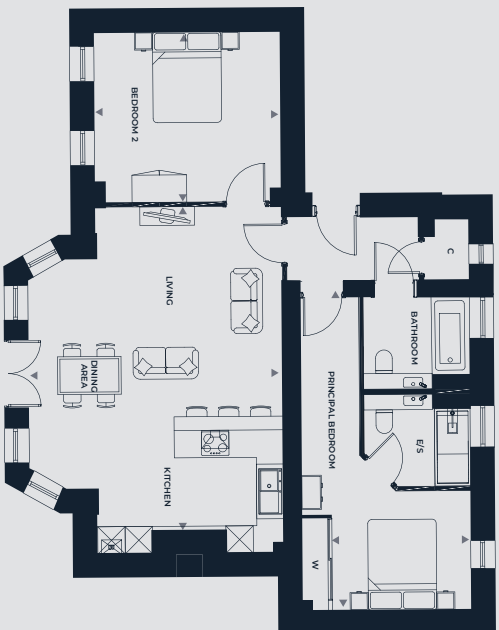
| | | |
|--------------------------------|-------------|----------------|
| Living / Kitchen / Dining Area | 7.0m x 6.5m | 23'2" x 21'7" |
| Principal Bedroom | 3.0m x 2.9m | 9'11" x 9'9" |
| Bedroom 2 | 3.3m x 3.2m | 11'11" x 10'7" |
| Bedroom 3 | 3.3m x 3.2m | 11'0" x 10'7" |

PLOT 86 BEDS 2 LEVEL GF

OVERALL SIZE - 85.7 M² | 922 FT²

PLOT 87 BEDS 2 LEVEL GF

OVERALL SIZE - 103.8 M² | 1117 FT²



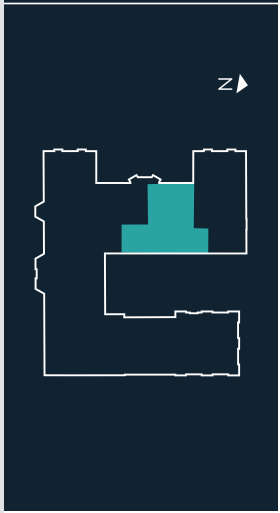
| | | |
|--------------------------------|-------------|---------------|
| Living / Kitchen / Dining Area | 5.6m x 7.6m | 18'5" x 25'0" |
| Principal Bedroom | 3.7m x 6.8m | 12'3" x 22'7" |
| Bedroom 2 | 4.1m x 3.7m | 13'6" x 12'4" |



| | | |
|--------------------------------|-------------|----------------|
| Living / Kitchen / Dining Area | 7.2m x 6.5m | 23'6" x 21'4" |
| Principal Bedroom | 3.9m x 2.7m | 12'8" x 8'9" |
| Dressing Room | 1.4m x 4.0m | 4'7" x 13'3" |
| Bedroom 2 | 6.8m x 3.9m | 22'6" x 12'11" |

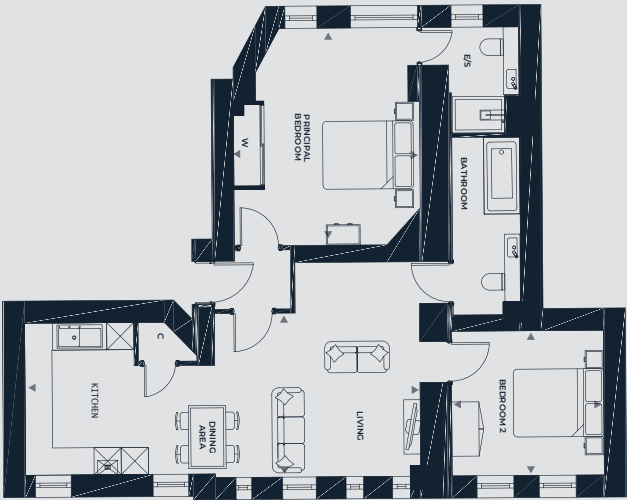
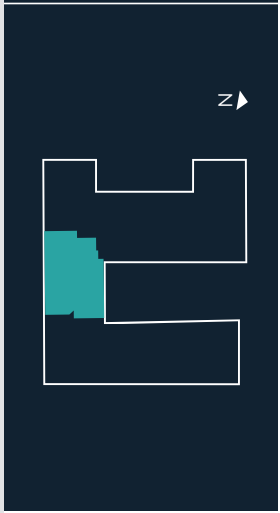
PLOT **88** BEDS **2** LEVEL **GF**

OVERALL SIZE - 80.6 M² | 867 FT²

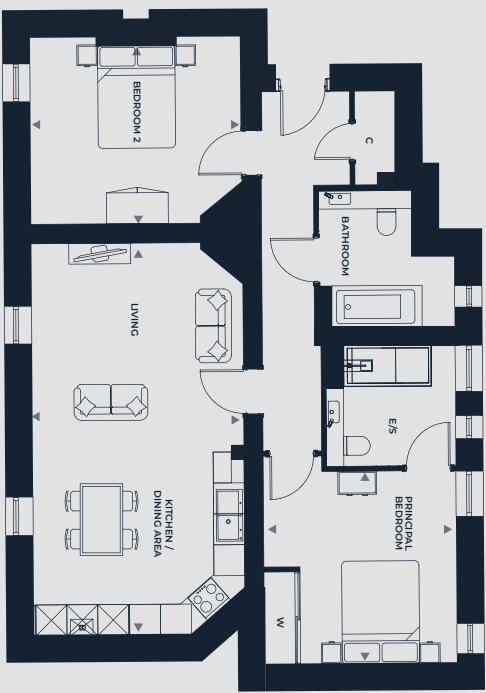


PLOTS **89** BEDS **2**

OVERALL SIZE - 88.9 M² | 957 FT²



| | | |
|--------------------------------|-------------|---------------|
| Living / Kitchen / Dining Area | 8.7m x 3.3m | 28'8" x 11'0" |
| Principal Bedroom | 4.1m x 4.8m | 13'8" x 15'9" |
| Bedroom 2 | 3.3m x 3.1m | 11'0" x 10'6" |



| | | |
|--------------------------------|-------------|----------------|
| Living / Kitchen / Dining Area | 4.1m x 7.6m | 13'6" x 25'0" |
| Principal Bedroom | 3.8m x 3.7m | 12'4" x 12'3" |
| Bedroom 2 | 4.1m x 3.6m | 13'6" x 11'11" |

*Bathroom shown is plot 92. Plot 89 bathroom layout differs, please refer to sales office floor plans

PLOTS **90** **93**
 BEDS **2**

OVERALL SIZE - 86.5 M² | 931 FT²

PLOTS **91** **94**
 BEDS **2**

OVERALL SIZE - 70.8 M² | 762 FT²



| | | |
|--------------------------------|-------------|-----------------|
| Living / Kitchen / Dining Area | 7.1m x 5.9m | 23'6" x 19'4" |
| Principal Bedroom | 4.1m x 3.9m | 13'6" x 12'10" |
| Bedroom 2 | 3.3m x 3.3m | 10'11" x 10'10" |



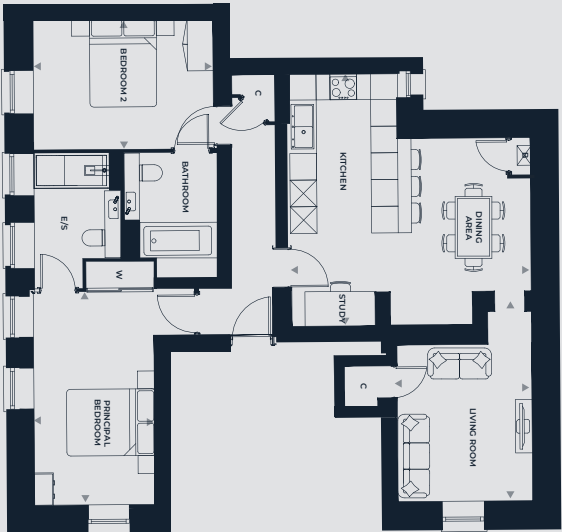
| | | |
|--------------------------------|-------------|----------------|
| Living / Kitchen / Dining Area | 8.7m x 3.3m | 28'6" x 10'10" |
| Principal Bedroom | 4.5m x 2.5m | 14'11" x 8'3" |
| Bedroom 2 | 3.8m x 3.3m | 12'6" x 11" |

PLOT **95** BEDS **2** LEVEL **GR**

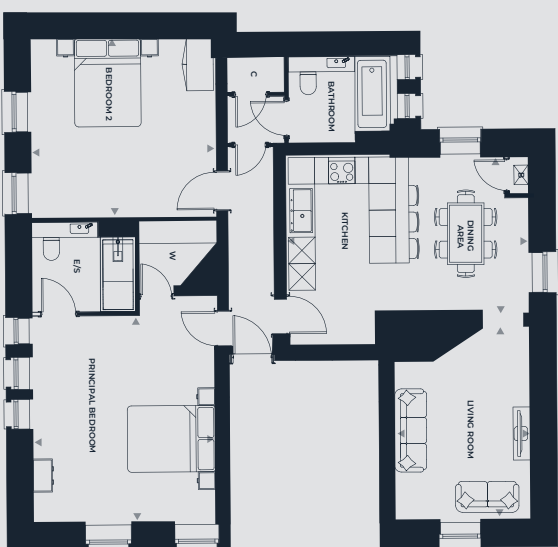
OVERALL SIZE - 87.5 M² | 942 FT²

PLOTS **96** **97** BEDS **2**

OVERALL SIZE - 95.4 M² | 1026 FT²



| | | |
|-----------------------|-------------|----------------|
| Kitchen / Dining Area | 5.7m x 5.4m | 18'9" x 17'10" |
| Living Room | 3.6m x 3.1m | 11'8" x 10'1" |
| Principal Bedroom | 4.8m x 2.8m | 15'9" x 9' |
| Bedroom 2 | 2.9m x 4.1m | 9'8" x 13'5" |



| | | |
|-----------------------|-------------|----------------|
| Kitchen / Dining Area | 3.5m x 5.5m | 11'5" x 17'10" |
| Living Room | 4.3m x 3.9m | 14'2" x 10'2" |
| Principal Bedroom | 4.7m x 4.2m | 15'4" x 13'7" |
| Bedroom 2 | 4.1m x 4.2m | 13'3" x 13'7" |

PLOT 98 BEDS 2

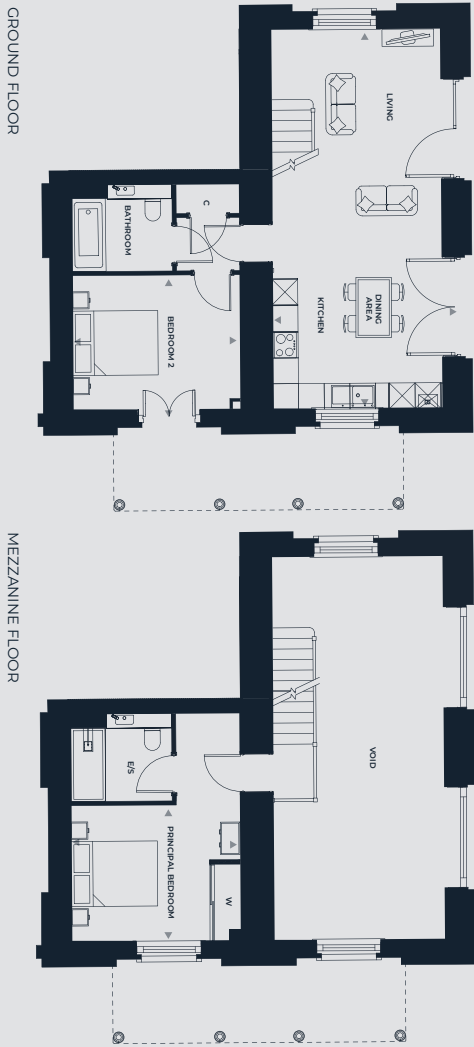
OVERALL SIZE - 80.8 M² | 869 FT²

PLOT 98 IS OVER 2 FLOORS

PLOT 99 BEDS 3

OVERALL SIZE - 155.1 M² | 1670 FT²*

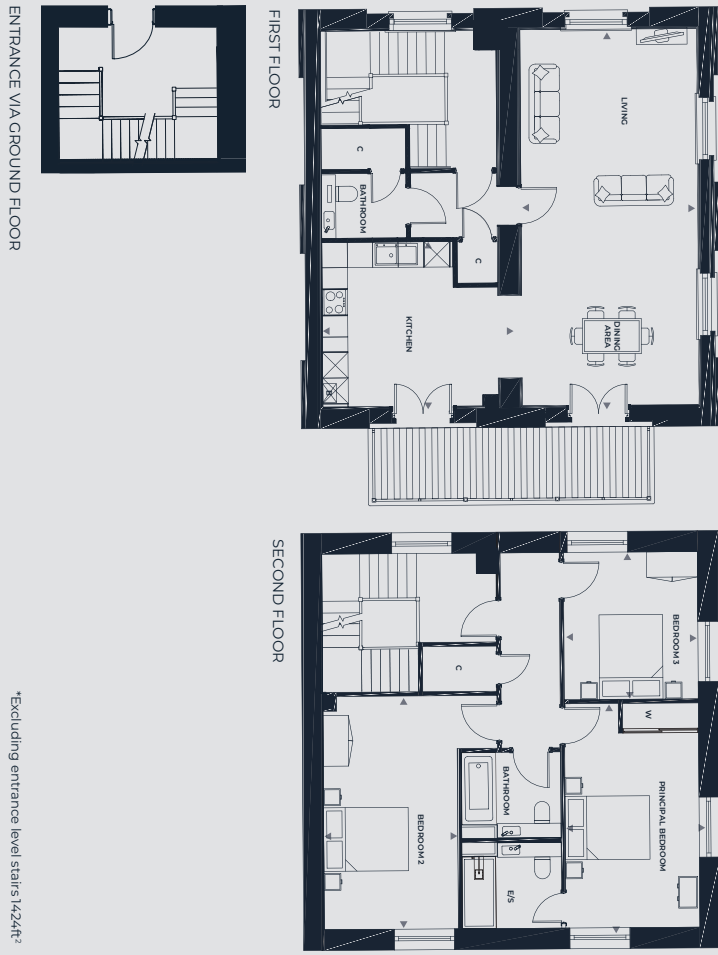
PLOT 99 IS OVER 2 FLOORS



Living / Kitchen / Dining Area
Principal Bedroom
Bedroom 2

4.0m x 8.9m
3.9m x 3.2m
3.9m x 3.2m

13'1" x 29'1"
12'11" x 10'4"
12'11" x 10'4"



Kitchen
Living / Dining Area
Principal Bedroom
Bedroom 2
Bedroom 3

4.1m x 3.9m
4.2m x 8.9m
3.2m x 5.3m
3.2m x 5.5m
3.2m x 3.5m

13'7" x 12'9"
13'8" x 29'1"
10'5" x 17'5"
10'5" x 18'1"
10'5" x 11'5"

*Excluding entrance level stairs 1424ft²

GUN HILL HOUSE

AT GUN HILL PARK
THE WELLESLEY ESTATE | ALDERSHOT

Hospital Road, Aldershot, GU11 2AN

T: 01252 957843 | E: gunhillpark@weston-homes.com

The Weston Group Business Centre

Parsonage Road, Takeley, Essex, CM22 6PU

T: 01279 873300

E: sales@weston-homes.com

www.weston-homes.com



Please Note: The information contained in this brochure is for guidance only. Weston Homes Plc operates a policy of continuous product development and features may therefore vary from time to time. Floor plans and dimensions can only be given as a guide and are indicative of the type only. The computer generated images, floor plans, configuration and layouts are included for guidance only, please refer to drawings in sales suite. It should be noted that the representations of Gun Hill House at Gun Hill Park whilst similar to the development, may not necessarily be accurate in every respect.

These particulars should not be relied on as accurately describing any of the specific matters described by any order under the Consumer Protection from Unfair Trading Regulations (2008). This information does not constitute a contract of warranty. All details correct as above at time of going to press. Gun Hill House at Gun Hill Park is the marketing name for use until a permanent postal address has been issued.