



Standmoor Court Park Lane

Manchester, M45 7PF

Offers over £150,000

Homedaze Estate Agents are delighted to bring to the market this exceptional ground floor, two double bedroom apartment, superbly positioned in the highly sought-after Park Lane area of Whitefield. Enjoying breathtaking panoramic views across Whitefield Golf Course, this well-presented apartment offers spacious and well-planned accommodation, ideal for a range of buyers.

The property is accessed via a well-maintained communal entrance leading to the apartment's front door. Internally, a welcoming hallway with useful storage cupboards and an intercom entry system provides access to all rooms. The fitted kitchen is equipped with a range of wall and base units with complementary work surfaces, integrated oven and hob, fridge/freezer, dishwasher, washer/dryer and waste disposal unit.

The generously sized open-plan lounge and dining area offers ample space for both seating and dining furniture and features French patio doors opening onto an elevated balcony. From here, residents can enjoy truly stunning, uninterrupted views over Whitefield Golf Course, creating a wonderful setting for relaxing or entertaining.

Both bedrooms are well-proportioned doubles, with the principal bedroom benefiting from an extensive range of modern fitted furniture and further panoramic views over the golf course. The contemporary shower room comprises a walk-in shower cubicle, WC and wash hand basin.

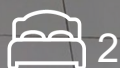
Externally, the property is surrounded by well-tended communal gardens and benefits from an in-and-out driveway to the

- Spacious Ground Floor Apartment
- Fitted Kitchen With Appliances
- No Chain
- Stunning Golf Course Views
- Sought after M45 Location
- Car port
- Visitor Parking

Viewing

Please contact our HomeDaze Manchester Office on 0161 691 1916

if you wish to arrange a viewing appointment for this property or require further information



2



1

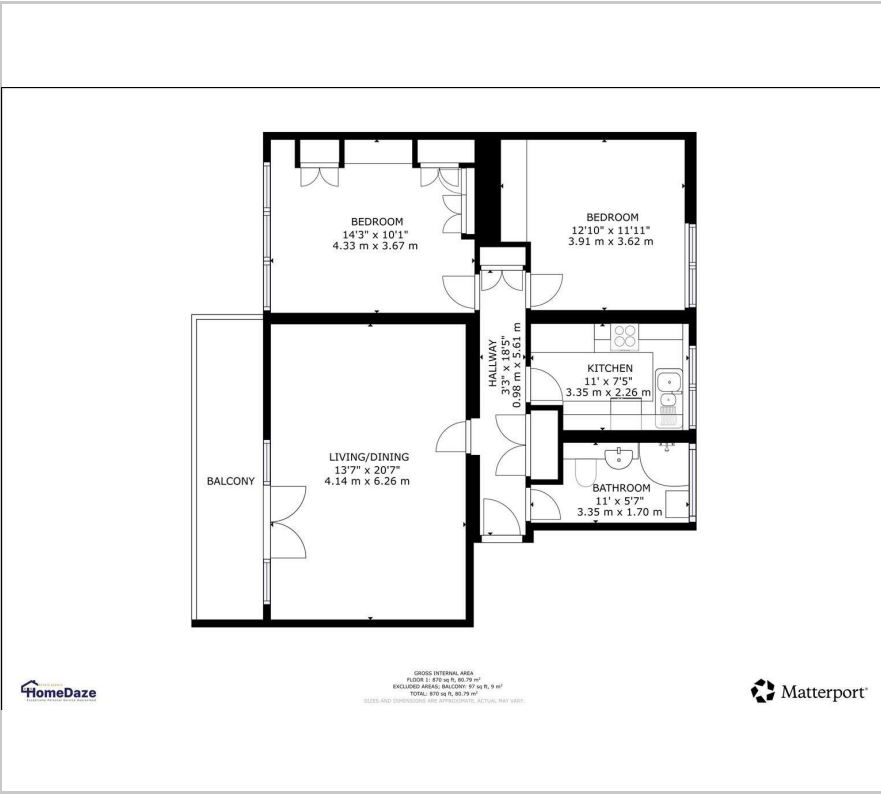


1



C

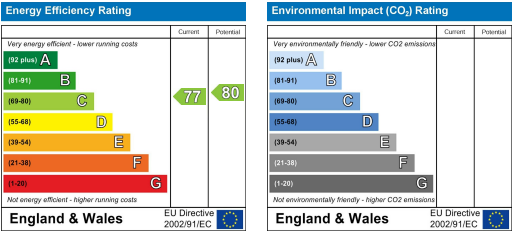
Floor Plan



Area Map



Energy Efficiency Graph



These particulars, whilst believed to be accurate are set out as a general outline only for guidance and do not constitute any part of an offer or contract. Intending purchasers should not rely on them as statements of representation of fact, but must satisfy themselves by inspection or otherwise as to their accuracy. No person in this firms employment has the authority to make or give any representation or warranty in respect of the property.