



6 Deane Close

Whitefield, M45 7LG

Offers in excess of £375,000

VR 360 TOUR AVAILABLE

Welcome to this exceptional 3-bedroom linked detached home, ideally situated in the highly desirable Whitefield M45 location. This property boasts proximity to local amenities, places of worship, and offers easy access to motorway junctions, making it perfect for families and commuters alike.

Upon entering, you are greeted by a charming porch entrance leading into the property. The ground floor features a spacious, long-through reception dining room, perfect for entertaining guests or enjoying family meals. The modern, sleek kitchen is equipped with integrated appliances, providing a stylish and functional space for all your culinary needs. Additionally, there is a second reception room, offering flexibility for use as a home office, playroom, or snug, along with a convenient downstairs WC and under-stair storage.

Upstairs, you will find three generously sized bedrooms, two of which come with built-in storage solutions, ensuring ample space for all your belongings. The contemporary family bathroom is designed with modern fittings and finishes, creating a relaxing environment for unwinding after a long day.

Externally, this property benefits from a well-maintained lawned and patio garden to the rear, ideal for outdoor dining, gardening, or simply enjoying the fresh air. The property also includes a garage, providing secure parking and additional storage space.

Viewing

Please contact our HomeDaze Manchester Office on 0161 691 1916

if you wish to arrange a viewing appointment for this property or require further information

- Sought-after Whitefield M45 location
- Close to local amenities and places of worship
- Easy access to motorway junctions
- 3 good-sized bedrooms with built-in storage in two
- Downstairs WC
- Porch entrance
- Modern family bathroom
- Lawned and patio garden to the rear
- Garage



3



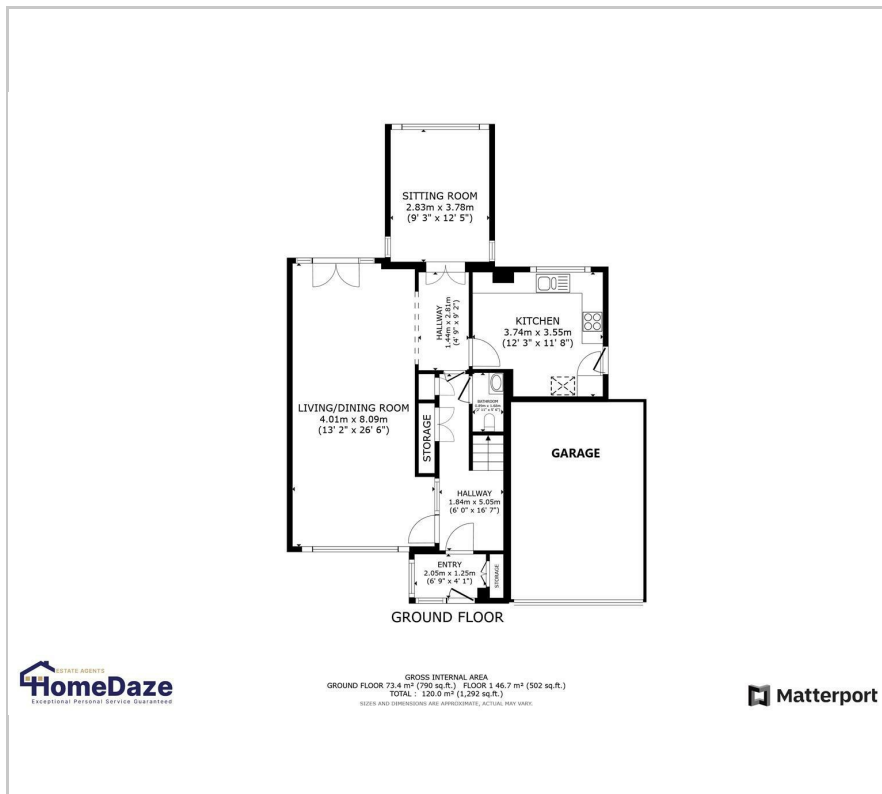
1



2



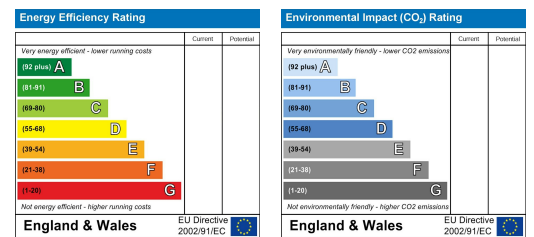
Floor Plan



Area Map



Energy Efficiency Graph



These particulars, whilst believed to be accurate are set out as a general outline only for guidance and do not constitute any part of an offer or contract. Intending purchasers should not rely on them as statements of representation of fact, but must satisfy themselves by inspection or otherwise as to their accuracy. No person in this firm's employment has the authority to make or give any representation or warranty in respect of the property.