



135 Park Lane

Whitefield, M45 7GT

Asking price £300,000

VR TOUR AVAILABLE

Stunning 3-Bedroom Semi-Detached House on Park Lane, Whitefield

Welcome to this charming three-bedroom semi-detached house located in the highly sought-after area of Park Lane, Whitefield. This property boasts a prime location, close to local amenities and offering easy access to motorway junctions. You'll also be within minutes of the beautiful Phillips Park.

Upon entering, you are greeted by a warm and welcoming reception room, perfect for relaxing evenings. The property features a separate dining room and a well-presented kitchen, ideal for family meals and entertaining guests.

Upstairs, there are three bedrooms, all offering built-in furniture for ample storage space. The private rear garden, mainly laid to lawn, provides a serene outdoor space for relaxation and recreation.

An integral garage offers additional storage and presents a fantastic opportunity to increase the internal square footage by converting the garage and extending above it (subject to planning permission).

Further benefits include A downstairs WC, driveway parking and the property is offered chain-free, making for a smooth and straightforward purchase.

Don't miss the chance to own this delightful home in a prime Whitefield location. Contact us today to arrange a viewing!

Viewing

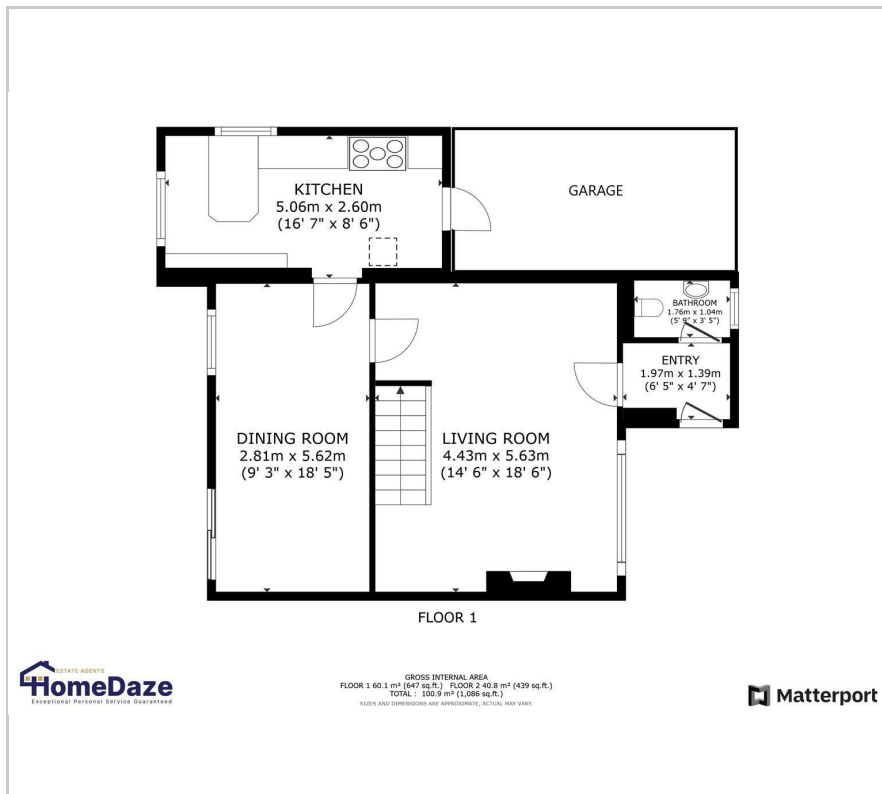
Please contact our HomeDaze Manchester Office on 0161 691 1916

if you wish to arrange a viewing appointment for this property or require further information

- SOUGHT AFTER M45 LOCATION
- 3 BED SEMI DETACHED
- WELL PRESENTED KITCHEN
- SEPERATE DINING ROOM
- GREAT POTENTIAL TO EXTEND SUBJECT TO PLANNING
- DRIVEWAY PARKING
- REAR GARDEN
- DOWNSTAIRS WC
- CHAIN FREE



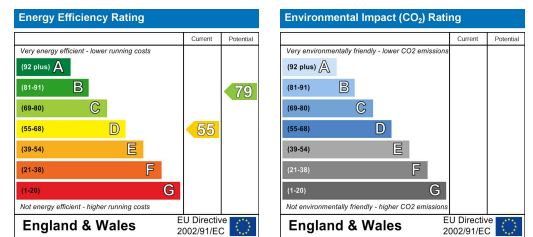
Floor Plan



Area Map



Energy Efficiency Graph



These particulars, whilst believed to be accurate are set out as a general outline only for guidance and do not constitute any part of an offer or contract. Intending purchasers should not rely on them as statements of representation of fact, but must satisfy themselves by inspection or otherwise as to their accuracy. No person in this firm's employment has the authority to make or give any representation or warranty in respect of the property.