



7 Westholme Road Prestwich, M25 2RE Asking price £290,000

Welcome to your modern oasis on Westholme Road, Prestwich! Nestled in a serene cul-de-sac mere steps from Heaton Park, this three-bedroom semi-detached beauty offers contemporary comfort and convenience.

Step inside to discover two inviting reception rooms, perfect for entertaining or unwinding after a long day. The sleek modern kitchen beckons culinary creativity, boasting style and functionality.

Upstairs, three cozy bedrooms await, along with a pristine family bathroom, providing both comfort and privacy for the whole family.

Outside, revel in the spacious garden, ideal for al fresco dining, gardening, or simply soaking up the sunshine. Plus, enjoy the convenience of front driveway parking, ensuring effortless arrivals and departures.

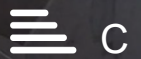
With no onward chain, seize the opportunity to make this modern haven your own and embrace the vibrant lifestyle Prestwich has to offer.

Viewing

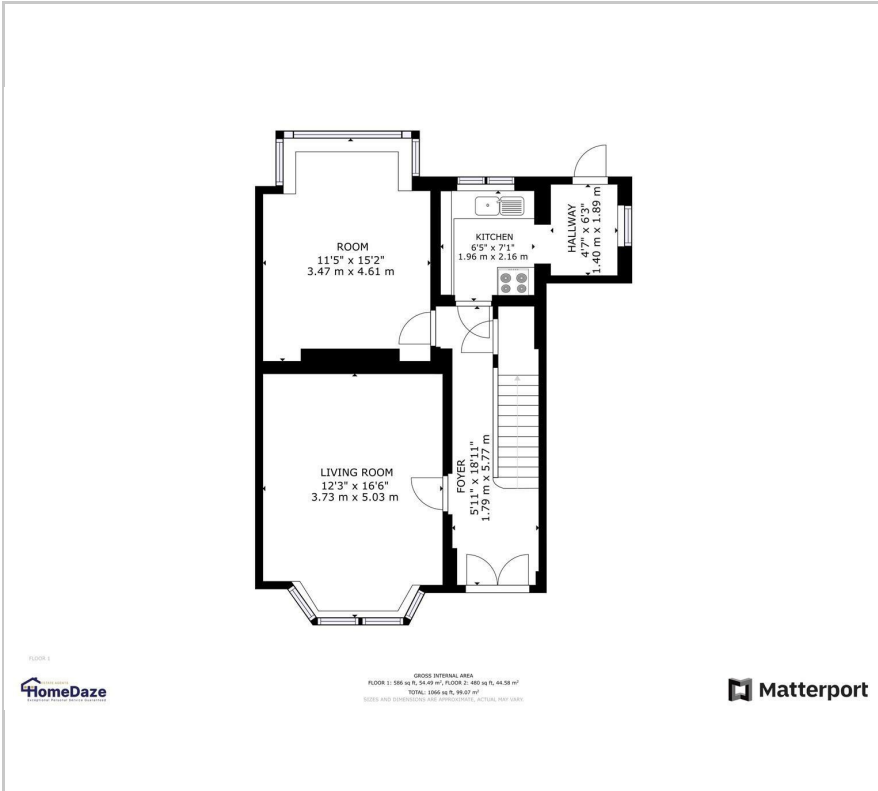
Please contact our HomeDaze Manchester Office on 0161 691 1916

if you wish to arrange a viewing appointment for this property or require further information

- 3 BED SEMI
- QUIET CUL DE SAC LOCATION
- HEATON PARK WITHIN WALKING DISTANCE
- VAST REAR GARDEN
- MODERN KITCHEN
- DRIVEWAY PARKING
- CHAIN FREE



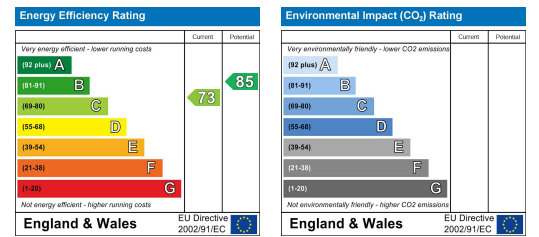
Floor Plan



Area Map



Energy Efficiency Graph



These particulars, whilst believed to be accurate are set out as a general outline only for guidance and do not constitute any part of an offer or contract. Intending purchasers should not rely on them as statements of representation of fact, but must satisfy themselves by inspection or otherwise as to their accuracy. No person in this firm's employment has the authority to make or give any representation or warranty in respect of the property.