



5 Westholme Road

Prestwich, M25 2RE

Asking price £190,000

Welcome to an exciting opportunity in Prestwich M25, nestled along Westholme Road a quiet cul de sac: a charming three-bedroom semi-detached 1930s home awaiting your creative touch. Situated conveniently close to Heaton Park and other local amenities, this property presents endless potential for renovation, allowing you to infuse it with your personal style and flair. Boasting two reception rooms, three generously sized bedrooms, a kitchen, bathroom, and separate WC, this home offers the ideal canvas for your dream space. An attached garage provides ample storage, while the vast rear garden beckons for outdoor leisure and entertainment. With the added benefit of being chain-free, seize the chance to transform this property into your perfect abode.

Contact us today to schedule your viewing and embark on this exciting journey before it's too late.

Viewing

Please contact our HomeDaze Manchester Office on 0161 691 1916

if you wish to arrange a viewing appointment for this property or require further information

- 3 BED SEMI
- SOUGHT AFTER M25 LOCATION
- CLOSE TO HEATON PARK
- VAST LAWNED REAR GARDEN
- CHAIN FREE
- IN NEED OF MODERNISATION
- QUIET CUL DE SAC STREET



3



1

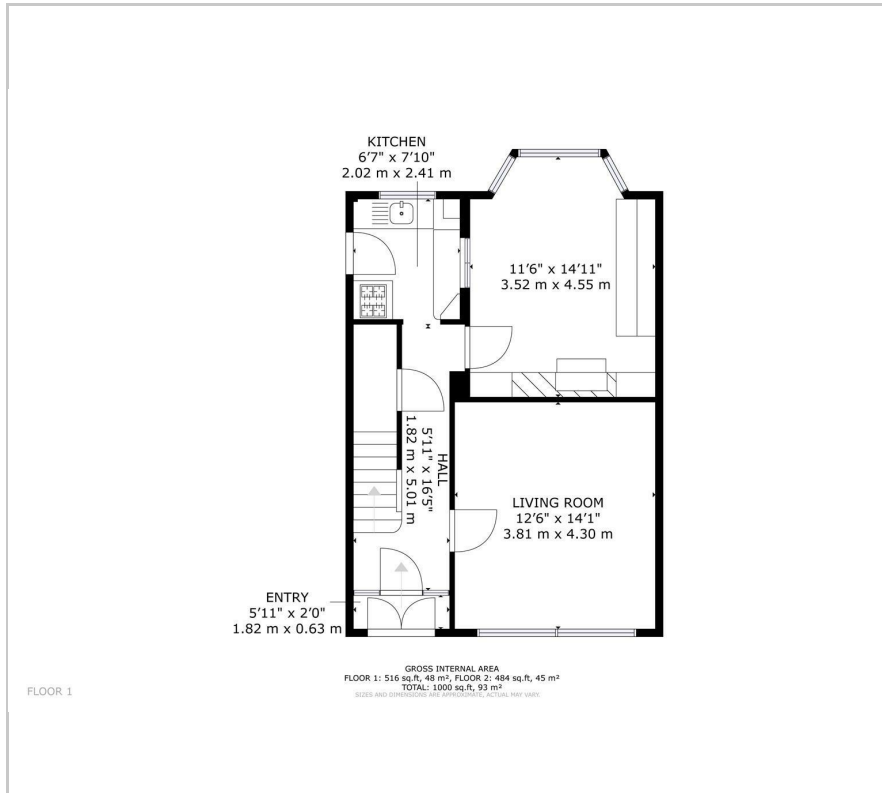


1



E

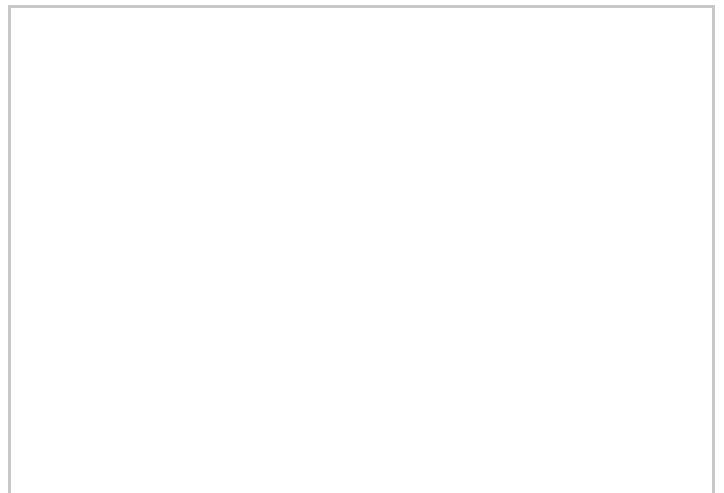
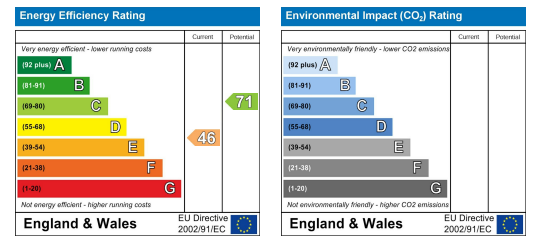
Floor Plan



Area Map



Energy Efficiency Graph



These particulars, whilst believed to be accurate are set out as a general outline only for guidance and do not constitute any part of an offer or contract. Intending purchasers should not rely on them as statements of representation of fact, but must satisfy themselves by inspection or otherwise as to their accuracy. No person in this firm's employment has the authority to make or give any representation or warranty in respect of the property.