



Property Webb
At the HEART of your move

Starlaw Gardens, Bathgate, EH48 1NL

Offers Over £240,000

🛏 4 🚗 2 🚲 1



Set in a cul-de-sac in one of Bathgate's most established residential areas, this spacious 4-bedroom semi-detached home offers generous room sizes, excellent storage, a driveway, garage and a sunny south-facing garden. With a bright dual-aspect lounge/diner, kitchen and large utility room this is an ideal long-term family home with fantastic potential to modernise and add value. A rare opportunity to secure a home in a location where families stay for years.

Starlaw Gardens is a location where families put down roots and stay for the long term, a welcoming setting with a strong sense of community. This is a home that offers space, light, and

📞 01506 637553

✉ info@property-webb-co.uk

🌐 www.property-webb.co.uk

📍 71 South Bridge St, Bathgate, EH48 1TJ



Property Webb
At the HEART of your move

the opportunity to modernise and personalise over time, creating something truly special in a location that continues to be in high demand.

 01506 637553

 info@property-webb-co.uk

 www.property-webb.co.uk

 71 South Bridge St, Bathgate, EH48 1TJ

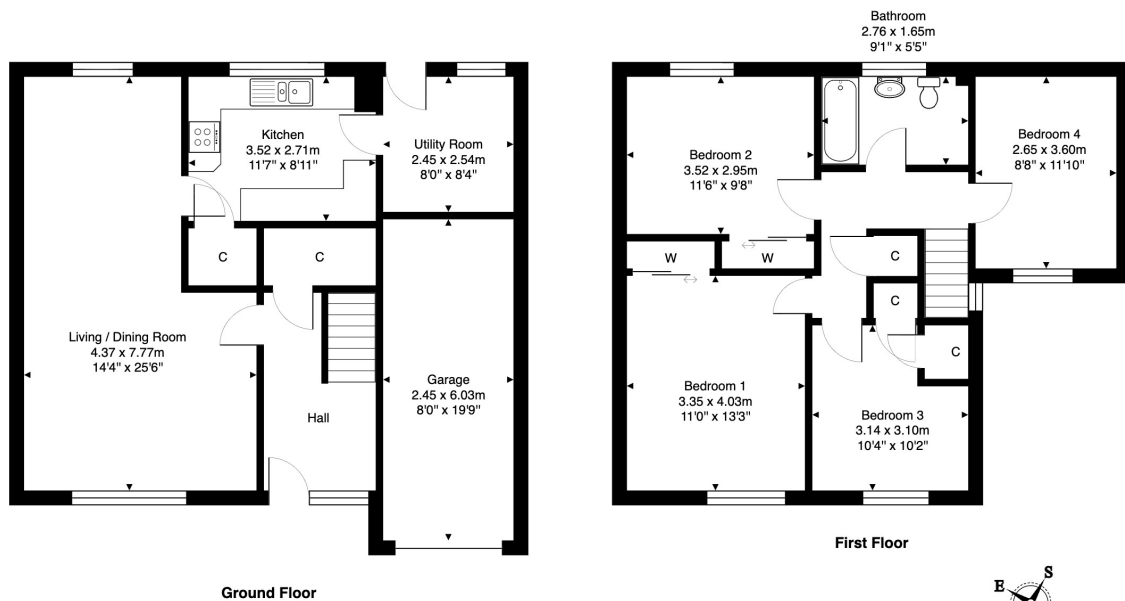


Property Webb
At the HEART of your move

Key Features

- Semi-Detached
- Spacious Family Home
- Lounge/Dining Room
- Fitted Kitchen
- Separate Utility Room
- 4 Good Sized Bedrooms
- Family Bathroom
- South Facing Garden
- Garage & Driveway
- Sought After Location

22 Starlaw Gardens, Bathgate, EH48 1NL



Total Area: 117.8 m² ... 1268 ft² (excluding garage)

All measurements are approximate and for display purposes only.