



Property Webb
At the HEART of your move

Laing Gardens, Broxburn, EH52 6XT

Offers Over £240,000

3 3 2



Set on a corner plot in a sought-after development, this 3 bedroom detached home offers modern living with space inside and out. The bright bay-windowed lounge flows into a dining room and modern kitchen with doors to a sunny west-facing garden, perfect for entertaining. Upstairs, the main bedroom features an en-suite, with two further bedrooms and a family bathroom completing the layout. With a driveway, single garage, and a prime location close to schools and amenities, this is a home that ticks every box for today's family lifestyle.

01506 637553

info@property-webb-co.uk

www.property-webb.co.uk

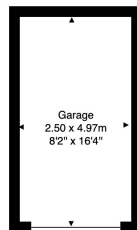
71 South Bridge St, Bathgate, EH48 1TJ



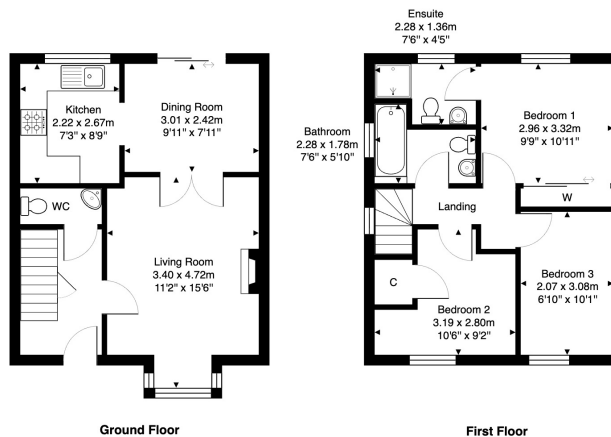
Property Webb
At the HEART of your move

Key Features

- Detached villa on corner plot
- Bright lounge with bay window
- Bedroom 1 with en-suite
- Main family bathroom
- Single garage and driveway
- Well presented
- Kitchen/dining room
- 2 further bedrooms
- West facing rear garden
- Would suit a range of buyers



84 Laing Gardens, Broxburn, EH52 6XT



Total Area: 82.2 m² ... 885 ft²

All measurements are approximate and for display purposes only

