



Property Webb  
At the HEART of your move

## Glasgow Road, Bathgate, EH48 2QR

Offers Over £325,000

🛏 3 🚿 2 🚗 1



A rare opportunity to own a beautifully preserved 1940s Art Deco detached bungalow set on a large plot in central Bathgate. This striking double-fronted home offers elegant period features, generous rooms, and a flexible layout. Highlights include a spacious lounge and formal reception/bedroom with curved picture windows and feature fireplaces, a well-appointed kitchen/diner, 3 double bedrooms, and a modern shower room. Externally, enjoy manicured front gardens, a multi-car driveway, detached double garage, and a private rear garden with patio and mature planting. A unique blend of character, space, and location.

📞 01506 637553

✉ info@property-webb-co.uk

🌐 www.property-webb.co.uk

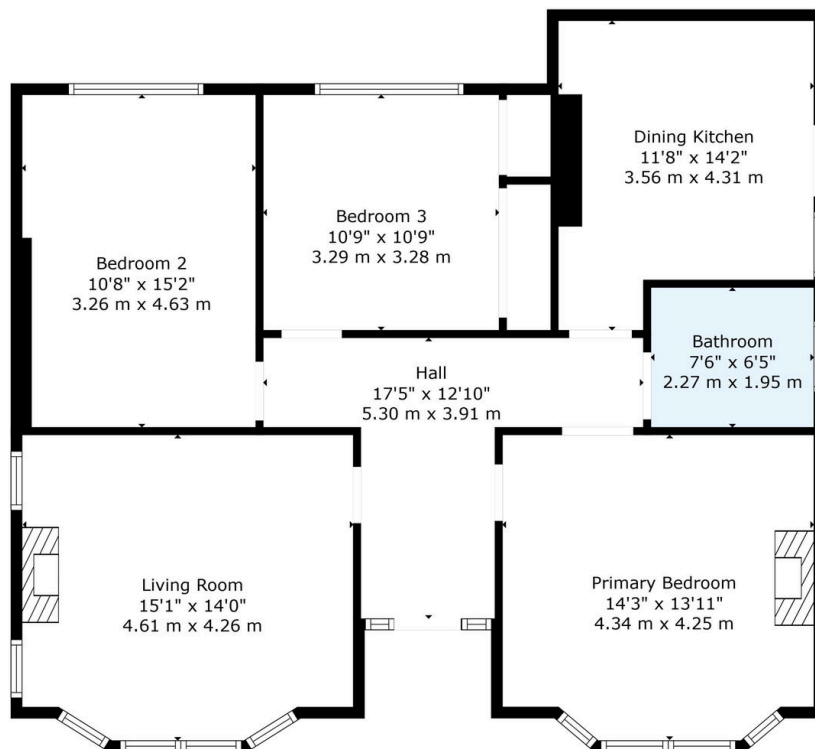
📍 71 South Bridge St, Bathgate, EH48 1TJ



Property Webb  
At the HEART of your move

## Key Features

- Double Fronted Detached Bungalow
- Beautiful Reception Room
- 3 Generous Double Bedrooms
- Private Rear Garden
- Spacious Plot
- Elegant Art Deco Features
- Well Appointed Kitchen/Diner
- Modern Shower Room
- Double Detached Garage
- Immaculately Presented



TOTAL: 1049 sq. ft, 98 m2  
FLOOR 1: 1049 sq. ft, 98 m2  
EXCLUDED AREAS: WALLS: 74 sq. ft, 6 m2

Floor Plan Created By Cubicasa App. Measurements Deemed Highly Reliable But Not Guaranteed.

