



Property Webb
At the HEART of your move

Castle Road, Wester Inch, Bathgate, EH48 2UB

Offers Over £130,000

🛏 2 🍳 1 🚗 1



A well-presented 2 double bedroom first-floor flat in the popular Wester Inch development. Featuring a bright bay-windowed lounge, modern breakfasting kitchen, two generous double bedrooms with built-in wardrobes, and a contemporary bathroom with rainfall shower. The property offers excellent storage, secure entry, and is move-in ready.

With its sought-after location, stylish interiors, and excellent commuter connections, this is a superb opportunity to step onto the property ladder or invest in a well-kept, high-demand area.

📞 01506 637553

✉ info@property-webb-co.uk

🌐 www.property-webb.co.uk

📍 71 South Bridge St, Bathgate, EH48 1TJ

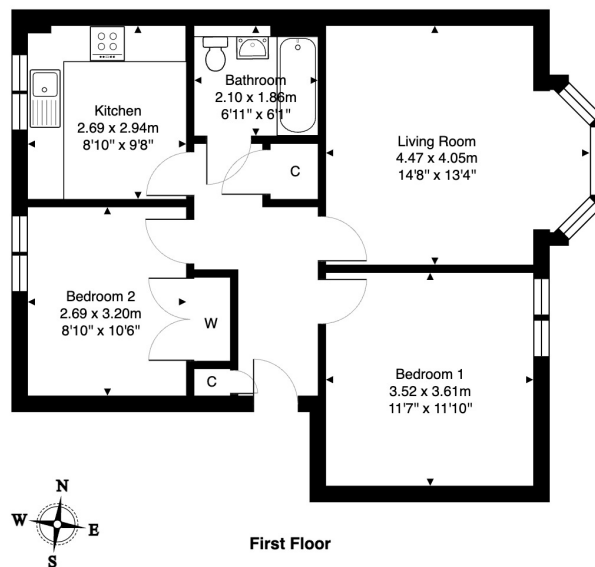


Property Webb
At the HEART of your move

Key Features

- Stylish Floor Apartment
- Move-in Ready
- Bright Lounge with Bay Window
- Modern Breakfasting Kitchen
- 2 Double Bedrooms with Wardrobes
- 3 Piece Bathroom
- Great Storage
- Allocated Parking Space
- Ideal for First Time Buyers & Investment
- Sought After Wester Inch

7 Castle Road, Wester Inch, Bathgate, EH48 2UB



Total Area: 61.1 m² ... 658 ft²

All measurements are approximate and for display purposes only.

