



Property Webb  
At the HEART of your move

## Haymarket Crescent, Livingston, EH54 8AP

Offers Over £175,000

🛏 2 🚿 1 🚗 1



Tucked away in a popular pocket of Livingston, this beautifully maintained 2 bedroom mid-terraced home on Haymarket Crescent offers an inviting blend of comfort, privacy and practicality, perfectly suited for first-time buyers or investors looking for a smart addition to their portfolio.

This is a home that balances ease and lifestyle, perfectly located, smartly presented, and ready to move into.

**\*\*Some pictures have been virtually staged\***

📞 01506 637553

✉ info@property-webb-co.uk

🌐 www.property-webb.co.uk

📍 71 South Bridge St, Bathgate, EH48 1TJ

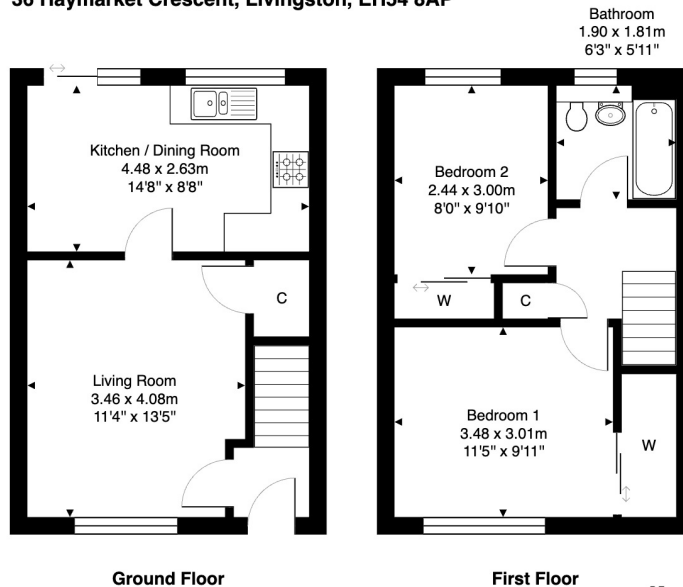


Property Webb  
At the HEART of your move

## Key Features

- Mid Terraced Home
- Popular Location
- Bright Lounge
- Modern Kitchen Diner
- 2 Double Bedrooms with storage
- 3 Piece Bathroom
- Rear Garden with Woodland Backdrop
- Allocated Parking
- Chain Free
- Within Walking Distance to Livingston North Train Station

36 Haymarket Crescent, Livingston, EH54 8AP



Total Area: 61.4 m<sup>2</sup> ... 661 ft<sup>2</sup>

All measurements are approximate and for display purposes only.

