






Property Webb
At the HEART of your move

Inchcross Park, Bathgate, EH48 2HF

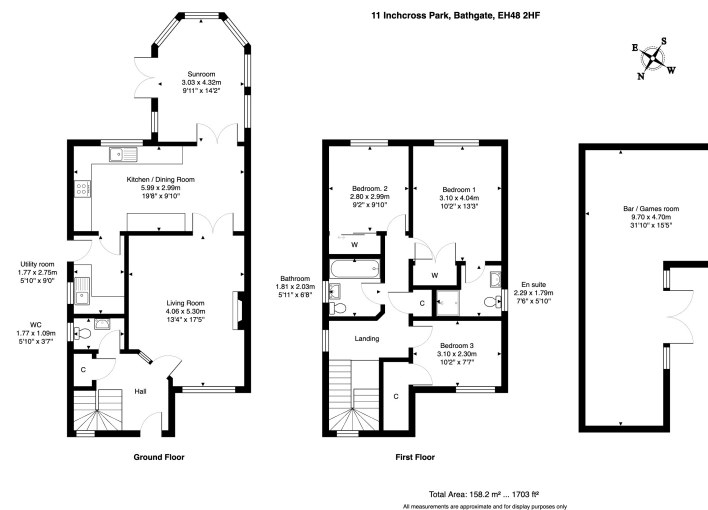
Offers Over £310,000

 3  3  3



- Executive Detached Family Home
- Spacious Lounge
- Sun Room
- 3 Bedrooms
- Multi Functional Entertaining Space
- Immaculately Styled & Ready to Move-In
- Stylish Kitchen/Dining Room
- Downstairs WC & Utility Room
- Family Bathroom & En-Suite
- South Facing Rear Garden Space





Tucked within the peaceful enclave of Inchcross Park in Bathgate, this elegant 3 bedroom detached residence blends contemporary comfort with thoughtful design, offering a lifestyle as effortless as it is stylish. This is more than a home, it's a haven for those who value style, comfort, and space to live and entertain with ease. Conveniently positioned for local schools, commuter links and Bathgate's array of amenities, Inchcross Park offers the perfect balance of suburban tranquillity and modern living.

