

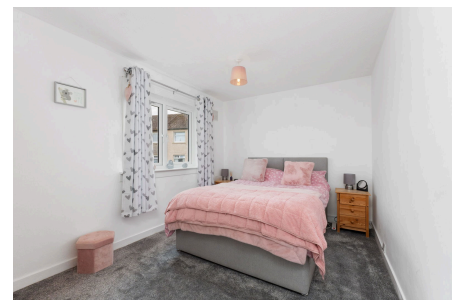


Property Webb
At the HEART of your move

Russell Avenue, Armadale, EH48 3PA

Offers Over £135,000

🛏 2 🚿 1 🚗 1



Set within an established residential area, Russell Avenue presents a smart and well-maintained bedroom home. This property offers practical living spaces with a bright lounge, a well-equipped kitchen, and two comfortable double bedrooms. Whether you're a first-time buyer, small family, or downsizer looking for easy living, Russell Avenue delivers the space, comfort and location to make you feel right at home.

📞 01506 637553

✉ info@property-webb-co.uk

🌐 www.property-webb.co.uk

📍 71 South Bridge St, Bathgate, EH48 1TJ

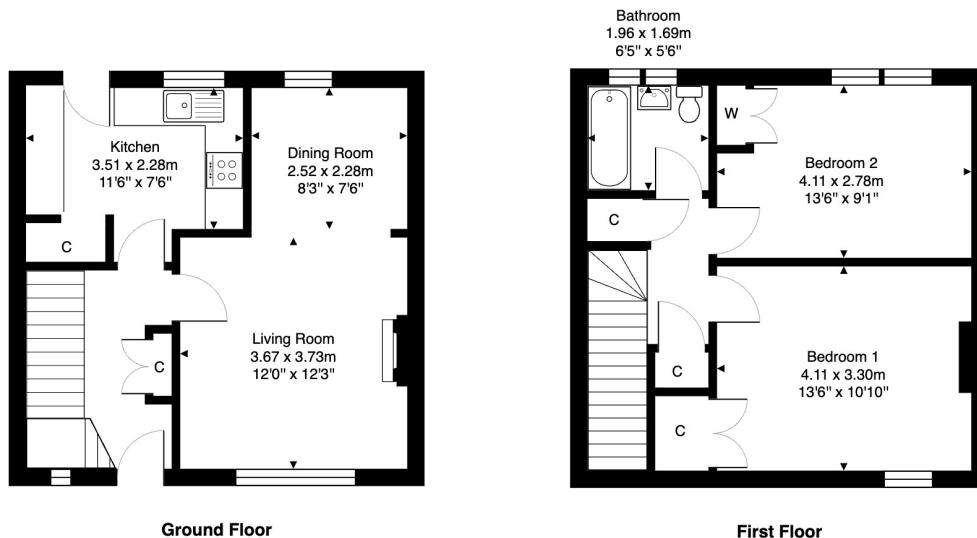


Property Webb
At the HEART of your move

Key Features

- Mid Terraced Home
- Bright & Spacious Loungr/Dining Room
- 2 Generously Sized Double Bedrooms
- Fully Enclosed Rear Garden
- Ideal for First Time Buyers, Downsizers & Small Families
- Ready to Move-In
- Fitted Kitchen
- Modern Bathroom
- Driveway
- Popular Residential Area

4 Russell Avenue Armadale, EH48 3PA



Total Area: 76.5 m² ... 823 ft²

All measurements are approximate and for display purposes only.

