

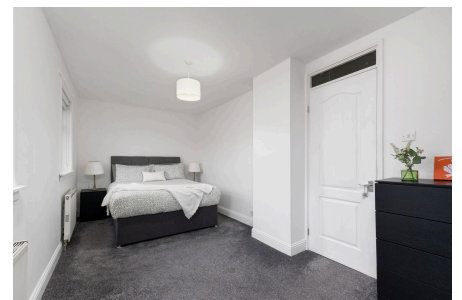


Property Webb
At the HEART of your move

Sutherland Way, Livingston, EH54 8HT

Offers Over £150,000

🛏 2 🚗 1 🛋 1



Tucked away in a cul-de-sac in the residential pocket of Knightsridge, 26 Sutherland Way offers an ideal opportunity to acquire a beautifully presented 2 double bedroom home, where style, space and comfort blend effortlessly to create an inviting retreat. Ready to move into and lovingly maintained, this stylish home would suit a wide range of buyers—from first-time homeowners to those looking to downsize without compromise.

📞 01506 637553

✉ info@property-webb.co.uk

🌐 www.property-webb.co.uk

📍 71 South Bridge St, Bathgate, EH48 1TJ

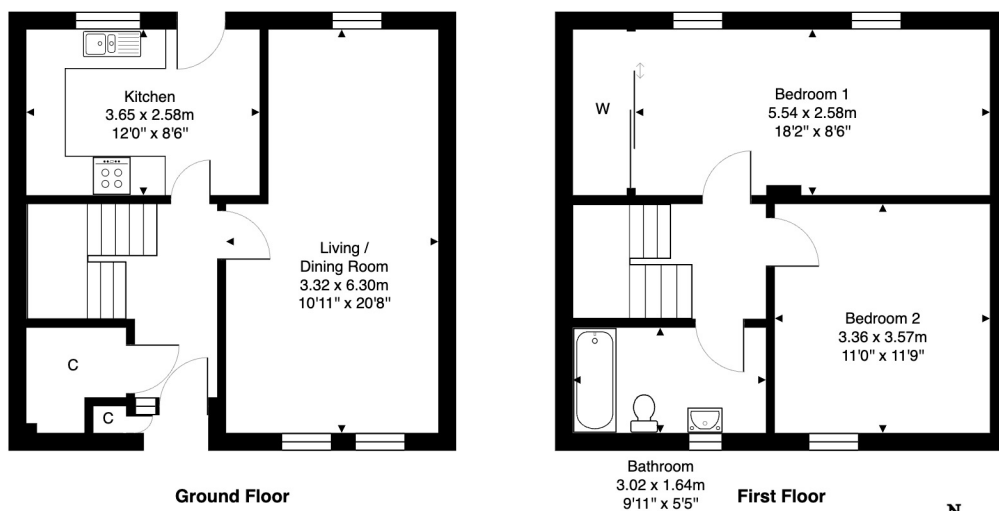


Property Webb
At the HEART of your move

Key Features

- Mid Terraced Home
- Bright Lounge/Dining Room
- 2 Generously Sized Bedrooms
- Fully Enclosed Rear Garden
-
- Ideal for First Time Buyers & Downsizers
- Modern Fitted Kitchen
- 3 Piece Bathroom
- Driveway
-

26 Sutherland Way, Livingston, EH54 8HT



Total Area: 80.7 m² ... 869 ft²

All measurements are approximate and for display purposes only.

