



Property Webb
At the HEART of your move

Sheephousehill, Fauldhouse, EH47 9DZ

Fixed Price £310,000

🛏 4 🍽 3 🛋 4



***NEW FIXED PRICE** Once a former mining cottage and the village corner shop, this remarkable 5/6 bedroom end-terraced period home on Sheephousehill, Fauldhouse has been beautifully transformed into over 3300 sqft of stylish offering excellent flexible living space. Whether you're a growing family looking for space to breathe, or someone who loves to entertain and host in style, this home offers a rare opportunity to step into something truly special. A house with history, beautifully reimagined for modern life.

📞 01506 637553

✉ info@property-webb-co.uk

🌐 www.property-webb.co.uk

📍 71 South Bridge St, Bathgate, EH48 1TJ

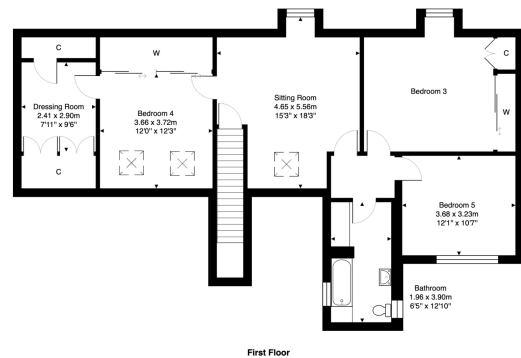
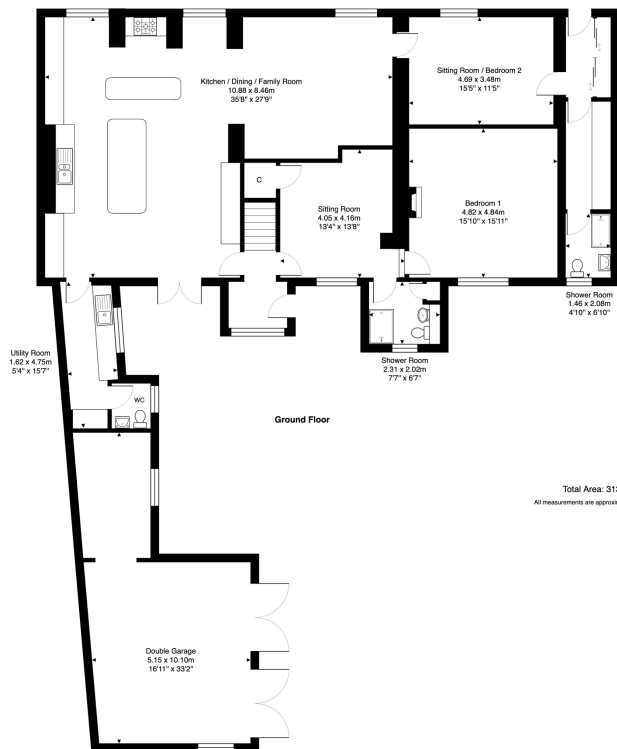


Property Webb
At the HEART of your move

Key Features

- Charming Period End-Terraced Home
- Over 3300sqft
- Spacious Living Areas
- Outstanding, Upgraded Kitchen/Dining
- Multiple Bedrooms
- 2 Shower Rooms & Family Bathroom
- Abundance of Storage
- South Facing Garden
- Gated Driveway
- Garage with workshop & further outbuilding

20 Sheephousehill, Fauldhouse, EH47 9DZ



Total Area: 313.8 m² ... 3377 ft²
All measurements are approximate and for display purposes only.

