



Property Webb
At the HEART of your move

Tulloch Court, Livingston Village, EH54 7FP

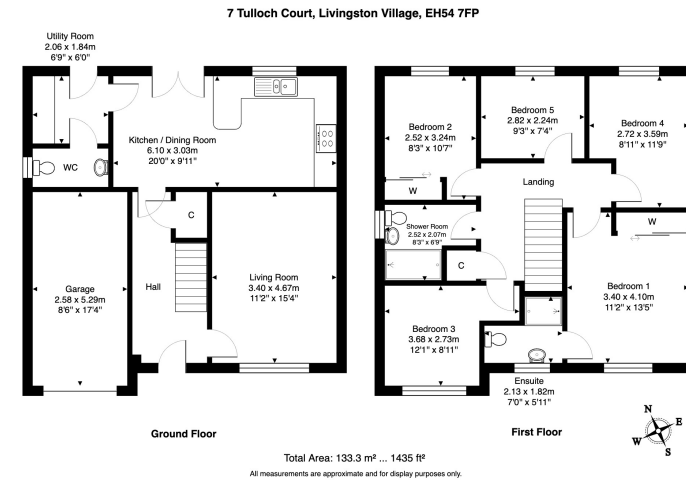
Fixed Price £350,000

🛏 5 🚿 3 🚗 1



- Executive Detached Family Home
- High End Upgrades
- Fully Integrated Appliances
- Bedroom 1 with Contemporary En-Suite
- Upgraded Family Bathroom
- Built by Persimmon 'Thornwood' Style
- Stylish Kitchen/Dining Room
- Separate Utility Room & WC
- 4 Further Bedrooms
- Private Rear Garden & Integral Garage





Located in the heart of Livingston Village, this impressive 5-bedroom detached home in Tulloch Court offers spacious, modern living with a host of high-end upgrades. With contemporary finishes, flexible living spaces, and premium upgrades throughout, this exceptional home is perfect for families seeking style, comfort, and convenience in a sought-after location.

