



Property Webb  
At the HEART of your move

## Drumshoreland Road, Pumpherston, EH53 0LF

Offers Over £180,000

🛏 2 🚿 1 🚗 1



Delightful, well presented 2 bedroom mid-terraced cottage set in the popular village of Pumpherston on the outskirts of Livingston. With an impressive rear garden and well-proportioned interiors, this home offers a perfect blend of charm and practicality. A true blank canvas for those eager to add their own personal touch, it provides an inviting retreat in an ideal village setting.

📞 01506 637553

✉ info@property-webb.co.uk

🌐 www.property-webb.co.uk

📍 71 South Bridge St, Bathgate, EH48 1TJ

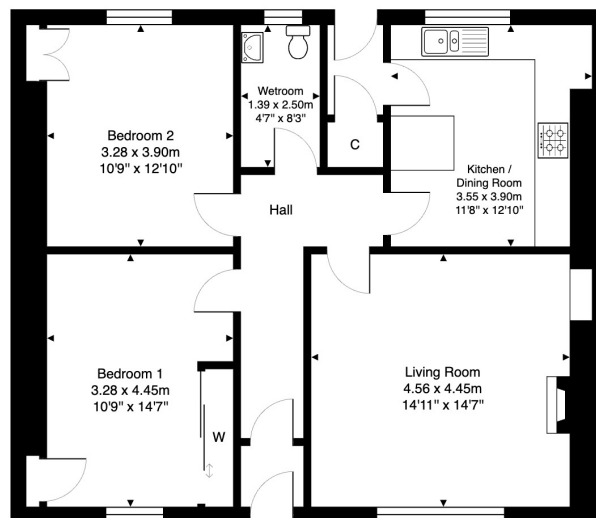


Property Webb  
At the HEART of your move

## Key Features

- Charming mid-terraced cottage
- Peaceful village location
- Walking distance to local amenities
- Presented in move-in condition
- Spacious living room
- Upgraded kitchen/diner
- Two double bedrooms
- Stylish wet room
- Large garden
- Ample storage

21 Drumshoreland Road, Pumpherston, EH53 0LF



Total Area: 84.7 m<sup>2</sup> ... 912 ft<sup>2</sup>

All measurements are approximate and for display purposes only.

