






Property Webb
At the HEART of your move

Curlew Brae, Ladywell West, Livingston, EH54 6UG

Offers Over £280,000

 4  3  2



Tucked away in a cul-de-sac location in sought-after Curlew Brae within Ladywell, Livingston, this superb detached 4 bedroom villa offers an abundance of space. With a beautiful woodland outlook and a sun-filled southwest-facing garden, it provides a perfect balance of seclusion and convenience, just moments from local amenities.

 01506 637553

 info@property-webb-co.uk

 www.property-webb.co.uk

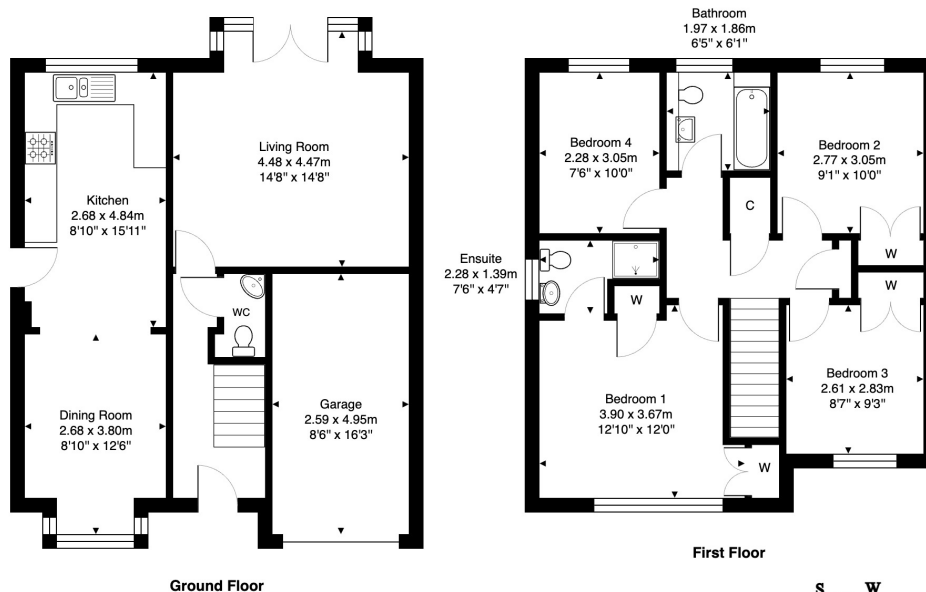
 71 South Bridge St, Bathgate, EH48 1TJ



Property Webb
At the HEART of your move

- Superb detached villa
- Spacious living room with access to rear garden
- Master bedroom with ensuite
- Family bathroom
- South-west facing garden
- Cul-de-sac location
- Generous kitchen/diner
- Three further bedrooms
- Downstairs guest cloakroom
- Driveway and garage

12 Curlew Brae, Livingston, EH54 6UG



Total Area: 120.6 m² ... 1298 ft²

All measurements are approximate and for display purposes only.

