



Property Webb  
At the HEART of your move

## Cameron Way, Knightsridge, Livingston, EH54 8HD

Offers Over £160,000

 2  1  2



This delightful 2-bedroom terraced house in Knightsridge, Livingston, is perfect for first-time buyers, young families, or those looking to downsize. With a practical layout and a warm, inviting atmosphere, it offers a comfortable and versatile living space in a popular residential area. This home combines practicality with charm, creating a welcoming and versatile living environment.

 01506 637553

 [info@property-webb.co.uk](mailto:info@property-webb.co.uk)

 [www.property-webb.co.uk](http://www.property-webb.co.uk)

 71 South Bridge St, Bathgate, EH48 1TJ

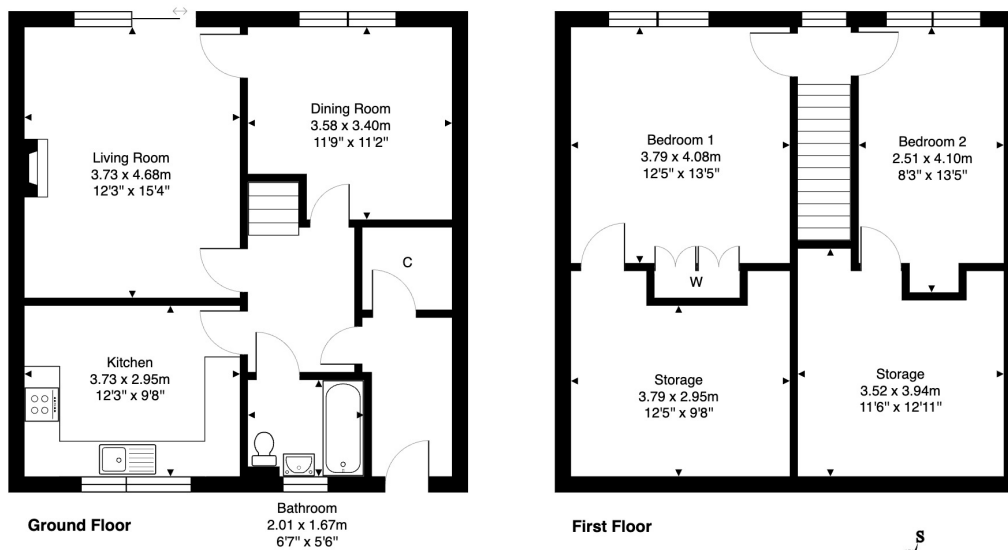


Property Webb  
At the HEART of your move

## Key Features

- Mid Terraced Home
- Move-In Condition
- Modern Fitted Kitchen
- Additional Storage
- On-Street Parking
- Spacious Rooms Through-out
- 2 Reception Rooms
- 2 Double Bedrooms
- Large Fully Enclosed Garden
- Popular area in Livingston

3 Cameron Way, Livingston, EH54 8HD



Total Area: 115.7 m<sup>2</sup> ... 1245 ft<sup>2</sup>

All measurements are approximate and for display purposes only.



01506 637553

info@property-webb-co.uk

www.property-webb.co.uk



71 South Bridge St, Bathgate, EH48 1TJ