



Property Webb  
At the HEART of your move

## 11 Parkhead Crescent, West Calder, EH55 8AU

Offers Over £115,000

🛏️ 2 🚿 1 🚗 1



This beautifully upgraded 2 double bedroom lower villa is located in a quiet spot within the popular village of West Calder, just a short walk from local amenities. Tastefully presented throughout, the property features a stunning living room, a stylish kitchen, and a sleek modern bathroom. With two spacious double bedrooms, well-maintained gardens, and the convenience of a private driveway, this home offers both charm and practicality in an ideal village setting.

📞 01506 637553

✉️ info@property-webb-co.uk

🌐 www.property-webb.co.uk

📍 71 South Bridge St, Bathgate, EH48 1TJ

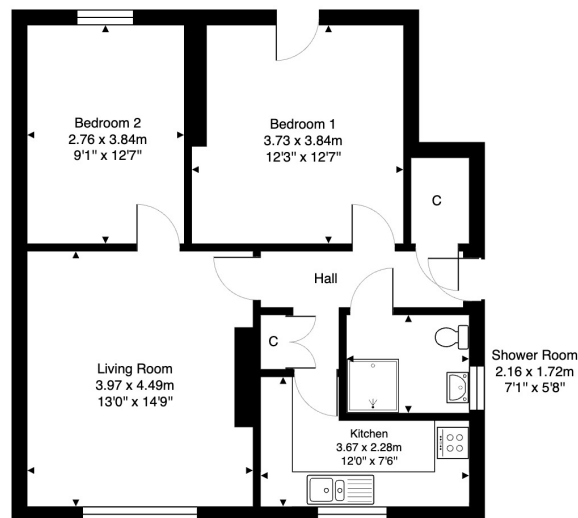


Property Webb  
At the HEART of your move

## Key Features

- Charming lower villa
- Presented in true move-in condition
- Stunning living room
- Master bedroom with french door to rear garden
- Sleek bathroom
- Sought after West Calder village
- Upgraded throughout
- Stylish kitchen
- Further double bedroom
- Driveway and generous gardens

11 Parkhead Crescent, West Calder, EH55 8AU



Ground Floor

Total Area: 63.1 m<sup>2</sup> ... 679 ft<sup>2</sup>

All measurements are approximate and for display purposes only.

