

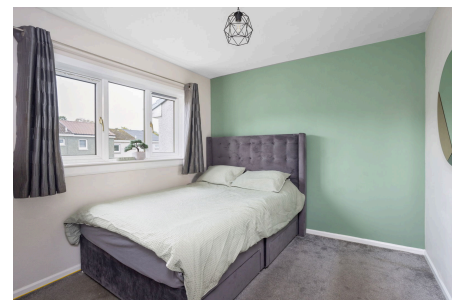


Property Webb
At the HEART of your move

Ochiltree Drive, Mid Calder, EH53 0RX

Offers Over £185,000

3 1 1



Tucked away in a peaceful cul-de-sac in the sought-after village of Mid Calder, this tastefully presented 3 bedroom end-terraced home is in move-in condition. The bright and spacious living/dining room opens directly to a sunny south-west facing garden, while the sleek, modern kitchen and stylish four-piece bathroom add a touch of elegance. With a garage and driveway providing ample parking and within walking distance to local amenities and well-regarded schools, this property is the perfect family home in an ideal location. This property perfectly combines modern living with charm and comfort, creating a welcoming and versatile space for any family.

01506 637553

info@property-webb-co.uk

www.property-webb.co.uk

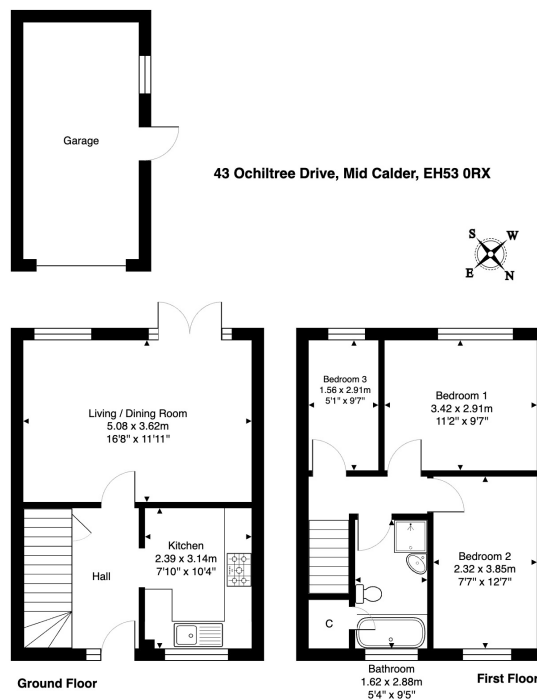
71 South Bridge St, Bathgate, EH48 1TJ



Property Webb
At the HEART of your move

Key Features

- Charming end terraced home
- Walking distance to local amenities
- Sleek kitchen
- 3 bedrooms
- South-west facing garden
- Highly regarded Mid Calder village
- Presented in move-in condition
- Bright living/dining room with access to rear garden
- Stylish 4 piece family bathroom
- Garage and driveway



Total Area: 70.6 m² ... 760 ft²

All measurements are approximate and for display purposes only.

01506 637553

info@property-webb.co.uk

www.property-webb.co.uk



71 South Bridge St, Bathgate, EH48 1TJ