






Property Webb
At the HEART of your move

Fitzallan Place, Bathgate, EH48 2UN

Offers Over £230,000

 4  3  2



This spacious end-terrace 4 bedroom townhouse is located in the sought-after Wester Inch development, offering a desirable leafy open outlook to the front. Designed as an ideal family home, the property spans three floors and boasts a modern layout. The ground floor includes a contemporary kitchen and a bright living/dining room that opens onto a private garden. On the first floor, three bedrooms share a beautifully designed family bathroom. The top floor is dedicated to a luxurious master suite, providing a peaceful retreat with ample space and privacy.

The generous accommodation, thoughtful design and convenient location make it an ideal proposition for any discerning buyer.

 01506 637553

 info@property-webb.co.uk

 www.property-webb.co.uk

 71 South Bridge St, Bathgate, EH48 1TJ

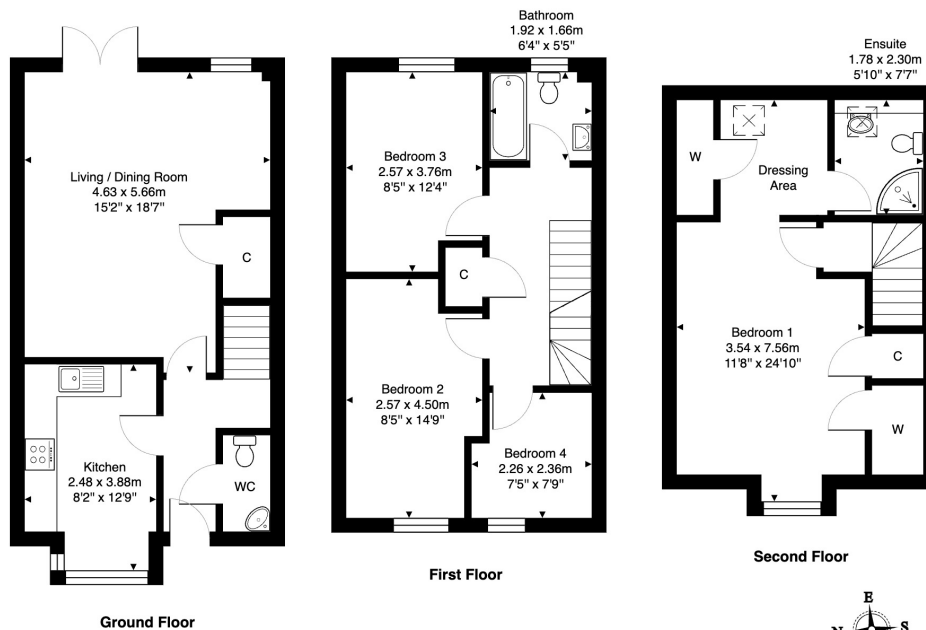


Property Webb
At the HEART of your move

Key Features

- Impressive end terraced townhouse
- Sought after Wester Inch development
- Envious open outlook to front
- Contemporary kitchen
- Spacious living/dining room with french doors to rear garden
- Master suite with dressing room and ensuite
- Three further bedrooms
- Stunning family bathroom
- Ground floor WC
- Private rear garden

1 Fitzallan Place, Bathgate, EH48 2UN



Total Area: 113.6 m² ... 1222 ft²

All measurements are approximate and for display purposes only.

