






Property Webb
At the HEART of your move

Waverley Crescent, Livingston, EH54 8JH

Fixed Price £270,000

 3  3  1



Tucked away in a tranquil cul-de-sac, this beautifully presented 3-bedroom detached home offers the perfect family retreat. Ready to move in, the spacious interior is ideal for modern living, with luxurious finishes throughout, including an elegant ensuite and family bathroom. Outside, the expansive garden, surrounded by mature trees, provides a private, serene space to unwind. Don't miss out on this exceptional home—schedule a viewing today!

 01506 637553

 info@property-webb-co.uk

 www.property-webb.co.uk

 71 South Bridge St, Bathgate, EH48 1TJ

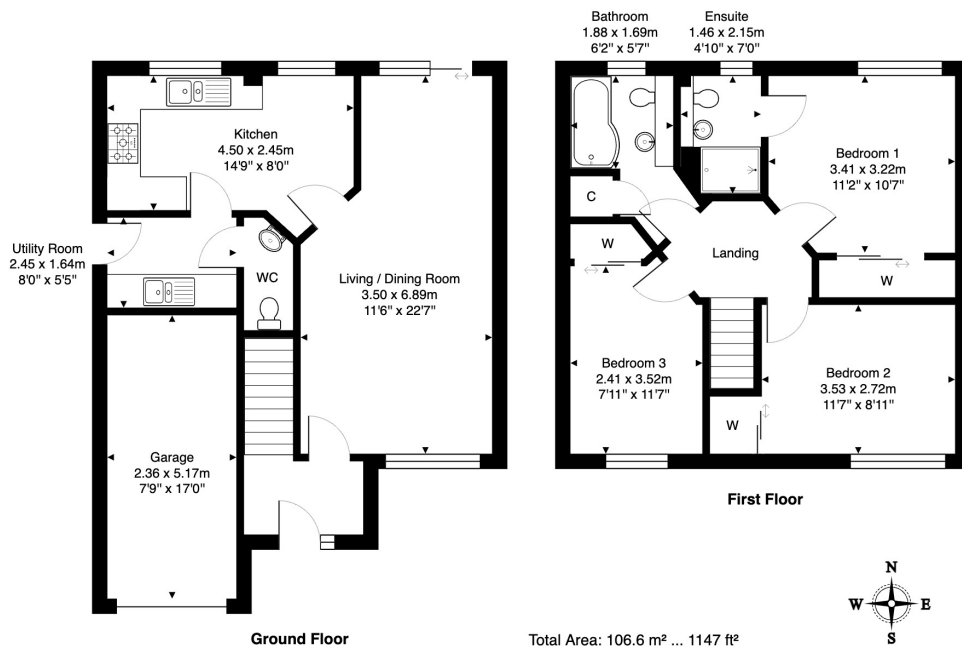


Property Webb
At the HEART of your move

Key Features

- Immaculate detached family home
- Corner location within quiet development
- Spacious living/dining room with access to garden
- Stylish kitchen
- Master bedroom with stunning ensuite
- Two further double bedrooms
- Luxurious family bathroom
- Utility room and downstairs WC
- Beautiful secluded garden
- Driveway and garage

12 Waverley Crescent, Livingston, EH54 8JH



01506 637553

info@property-webb-co.uk

www.property-webb.co.uk



71 South Bridge St, Bathgate, EH48 1TJ