






Property Webb
At the HEART of your move

Northpark Place, Elburn, Livingston, EH54 6TR

Offers Over £280,000

 4  3  2



This stunning 3/4 bedroom detached home, situated in a sought-after location, is impeccably presented and decorated throughout, offering true move-in condition. The lounge with its media wall leads seamlessly to an impressive kitchen diner, while the luxury bathrooms add a touch of sophistication and indulgence. The generous landscaped garden completes the home, providing a perfect blend of elegance, comfort and practicality.

 01506 637553

 info@property-webb.co.uk

 www.property-webb.co.uk

 71 South Bridge St, Bathgate, EH48 1TJ

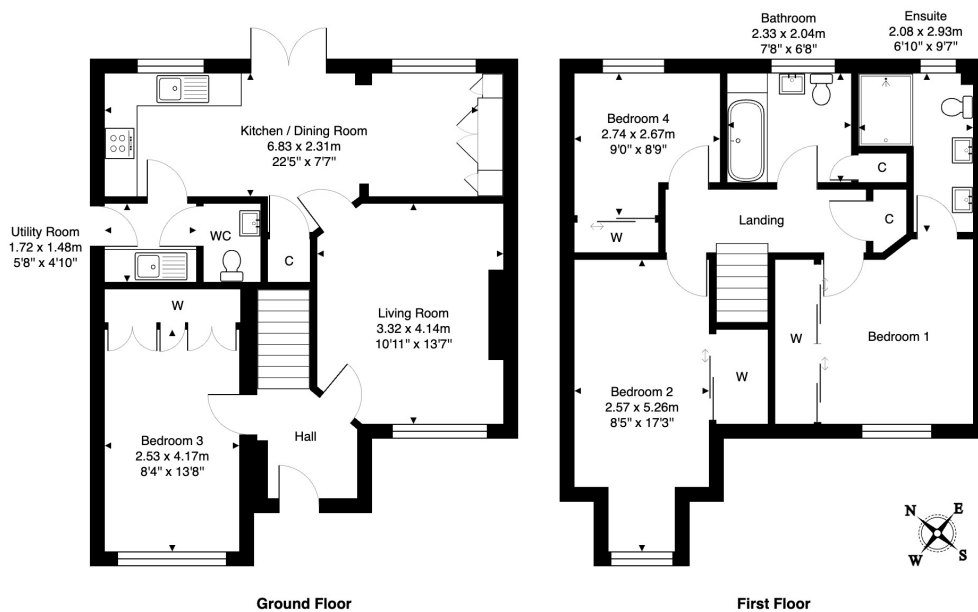


Property Webb
At the HEART of your move

Key Features

- Stunning 3/4 bedroom detached residence
- Impeccably presented throughout
- Immaculate kitchen diner
- Master bedroom with stunning ensuite
- Private rear garden with extra side space
- Sought after location
- Lounge with media wall
- Utility room and downstairs WC
- Luxury family bathroom
- Driveway

37 Northpark Place, Livingston, EH54 6TR



Total Area: 112.5 m² ... 1211 ft²

All measurements are approximate and for display purposes only.

01506 637553

info@property-webb.co.uk

www.property-webb.co.uk

71 South Bridge St, Bathgate, EH48 1TJ