



Property Webb
At the HEART of your move

Millbank Place, Uphall, EH52 5DU

Offers Over £200,000

🛏 3 🚗 1 🚲 1



This beautifully presented three-bedroom, mid-terraced period property is tucked away in a charming street within walking distance of Uphall. The home boasts an expansive south-facing rear garden, providing ample outdoor space and a serene setting. The home has been well cared for and offers buyers a home to move-straight into. Early viewing is recommended.

📞 01506 637553

✉ info@property-webb-co.uk

🌐 www.property-webb.co.uk

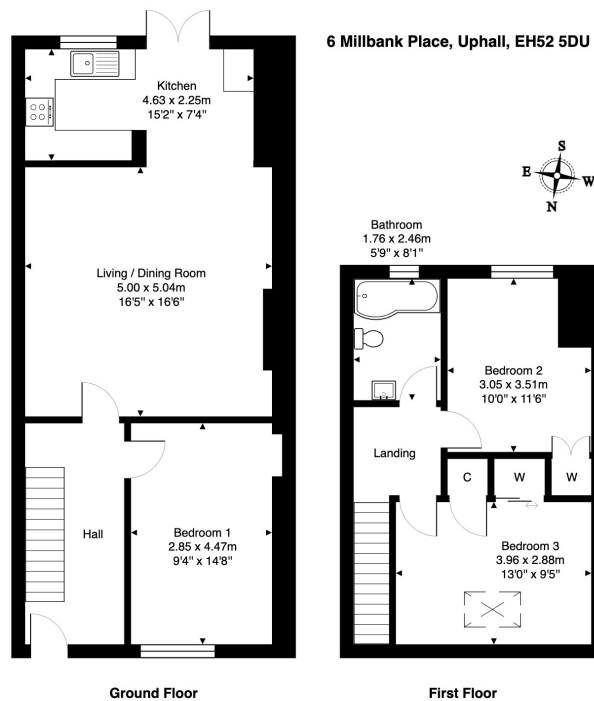
📍 71 South Bridge St, Bathgate, EH48 1TJ



Property Webb
At the HEART of your move

Key Features

- Mid-terraced period property
- Walking distance to Uphall station
- Modern kitchen with access to garden
- Contemporary bathroom
- Excellent storage
- Presented in true move-in condition
- Living/dining room with high ceilings
- 3 double bedrooms
- Large South-facing garden
- Ideal commuter location



Total Area: 98.2 m² ... 1057 ft²

All measurements are approximate and for display purposes only.

01506 637553

info@property-webb-co.uk

www.property-webb.co.uk

71 South Bridge St, Bathgate, EH48 1TJ