



Property Webb
At the HEART of your move

Goldpark Place, Eliburn, EH54 6LW

Offers Over £210,000

🛏 2 🚿 1 🚗 1



Discover the charm of this beautifully presented two double bedroom semi-detached bungalow in Eliburn. Inside, you'll find a modern kitchen with integrated appliances, a spacious lounge with a feature bay window, and a modern fully tiled shower room. The bedrooms are generously sized with ample storage, including fitted mirrored wardrobes in the master. With its neutral decor and move-in ready condition, this bungalow is a must-see for buyers seeking a delightful and practical home.

📞 01506 637553

✉ info@property-webb-co.uk

🌐 www.property-webb.co.uk

📍 71 South Bridge St, Bathgate, EH48 1TJ

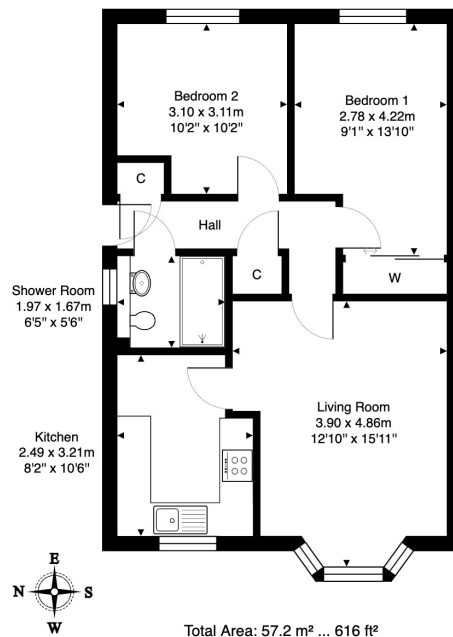


Property Webb
At the HEART of your move

Key Features

- Semi-Detached Bungalow
- Well Presented Through-out
- Good Sized Lounge
- Modern Kitchen
- 2 Double Bedrooms
- Fully Tiled Bathroom
- Large Rear Garden
- Driveway
- Popular Area
- Internal Viewing A Must

4 Goldpark Place, Elburn, Livingston, EH54 6LW



01506 637553

info@property-webb-co.uk

www.property-webb.co.uk

71 South Bridge St, Bathgate, EH48 1TJ