






Property Webb
At the HEART of your move

Manse Place, Bathgate, EH48 1NJ

Offers Over £190,000

 3  2  2



Situated in a secluded position on a spacious corner plot amidst serene woodland surroundings, this three-bedroom property with detached double garage offers an ideal retreat from the hustle and bustle of everyday life. Positioned to enjoy elevated views, the home presents an excellent opportunity for personalisation and customisation to suit individual preferences. With its peaceful location and ample space both indoors and outdoors, this property is the ideal family home.

 01506 637553

 info@property-webb.co.uk

 www.property-webb.co.uk

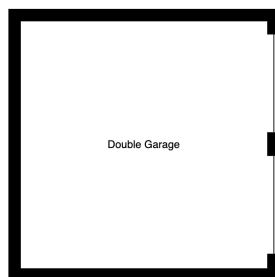
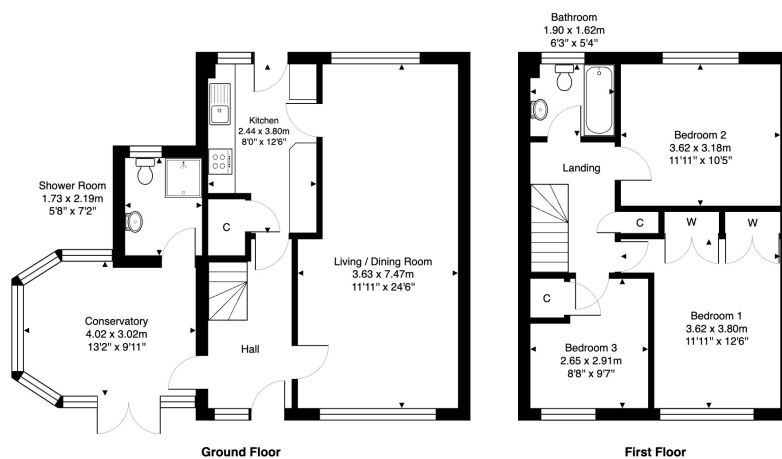
 71 South Bridge St, Bathgate, EH48 1TJ



Property Webb
At the HEART of your move

Key Features

- Charming semi-detached residence
- Large secluded corner plot
- Excellent potential
- Three bedrooms
- Family bathroom and downstairs shower room
- Generous living/dining room
- Modern fitted kitchen
- Sunny conservatory
- Mature gardens surrounded by woodland and views
- Large gated driveway with double garage



3 Manse Place, Bathgate, EH48 1NJ

Total Area: 103.6 m² ... 1115 ft² (excluding double garage)

All measurements are approximate and for display purposes only.



01506 637553

info@property-webb.co.uk

www.property-webb.co.uk

71 South Bridge St, Bathgate, EH48 1TJ